



SZABO SCANDIC

Part of Europa Biosite

Produktinformation



Forschungsprodukte & Biochemikalien



Zellkultur & Verbrauchsmaterial



Diagnostik & molekulare Diagnostik



Laborgeräte & Service

Weitere Information auf den folgenden Seiten!
See the following pages for more information!



Lieferung & Zahlungsart

siehe unsere [Liefer- und Versandbedingungen](#)

Zuschläge

- Mindermengenzuschlag
- Trockeneiszuschlag
- Gefahrgutzuschlag
- Expressversand

SZABO-SCANDIC HandelsgmbH

Quellenstraße 110, A-1100 Wien

T. +43(0)1 489 3961-0

F. +43(0)1 489 3961-7

mail@szabo-scandic.com

www.szabo-scandic.com

[linkedin.com/company/szaboscandic](https://www.linkedin.com/company/szaboscandic) 

RPA70 Antibody

Rabbit Polyclonal

Antigen Affinity Purified

Protein ID NP_002936.1

Catalog No. A300-241A-T

GeneID 6117

Lot No. A300-241A-T-3

APPLICATIONS	WB, IP, IHC
SPECIES REACTIVITY	Human, Mouse
PRESUMED REACTIVITY	Based on 100% sequence identity, this antibody is predicted to react with Orangutan
AMOUNT	10 µl
CONCENTRATION	1000 µg/ml
STORAGE/SHELF LIFE	2 – 8°C / 1 year from date of receipt
PHYSICAL STATE	Liquid
BUFFER	Tris-citrate/phosphate buffer, pH 7 to 8 containing 0.09% Sodium Azide
ISOTYPE	IgG
ORIGIN	USA
PRODUCTION PROCEDURES	Antibody was affinity purified using an epitope specific to RPA70 immobilized on solid support.

The epitope recognized by A300-241A-T maps to a region between residues 350 and 400 of human replication protein A1, 70kDa using the numbering given in entry NP_002936.1 (GeneID 6117).

APPLICATIONS Centrifuge tube to remove product from lid. Optimal working dilutions should be determined experimentally by the investigator. Prepare working dilution immediately before use.

Western Blot 1:2,000 – 1:10,000

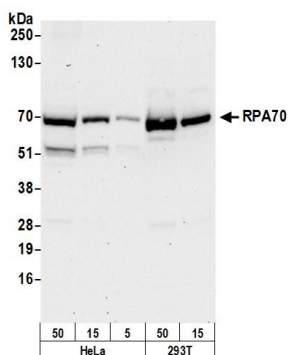
Immunoprecipitation 2 – 10 µg/mg lysate

Immunohistochemistry 1:1,000 – 1:5,000. Epitope retrieval with Tris-EDTA pH 9.0 is recommended for FFPE tissue sections.

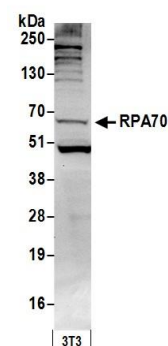
ADDITIONAL INFO <https://www.bethyl.com/product/A300-241A-T>

Use the link above to view SDS, a current list of citations, and other product specific information.
IP-western blot protocol: https://www.bethyl.com/content/protocol_IP_WB

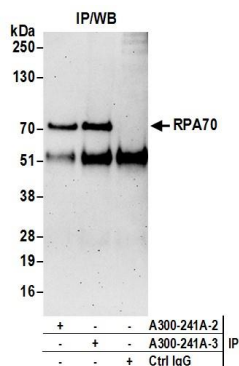
This document certifies that this product has met all of the quality control standards defined by Bethyl Laboratories, Inc.
Michael Spencer, PhD Date: June 6, 2022



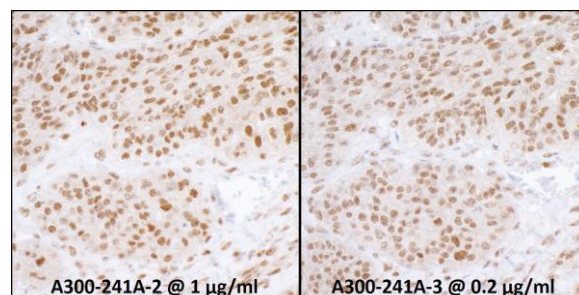
Detection of human RPA70 by western blot. *Samples:* Whole cell lysate (5, 15 and 50 µg) from HeLa and (15 and 50 µg) from HEK293T cells prepared using NETN lysis buffer. *Antibody:* Affinity purified rabbit anti-RPA70 antibody A300-241A (lot A300-241A-3) used for WB at 0.1 µg/ml. *Detection:* Chemiluminescence with an exposure time of 30 seconds.



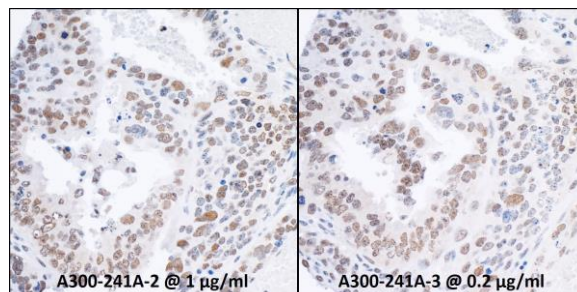
Detection of mouse RPA70 by western blot. *Samples:* Whole cell lysate (50 µg) from NIH 3T3 cells prepared using NETN lysis buffer. *Antibody:* Affinity purified rabbit anti-RPA70 antibody A300-241A (lot A300-241A-3) used for WB at 0.1 µg/ml. *Detection:* Chemiluminescence with an exposure time of 30 seconds.



Detection of human RPA70 by western blot of immunoprecipitates. *Samples:* Whole cell lysate (0.5 or 1.0 mg per IP reaction; 20% of IP loaded) from HeLa cells prepared using NETN lysis buffer. *Antibodies:* Affinity purified rabbit anti-RPA70 antibody A300-241A (lot A300-241A-3) used for IP at 6 µg per reaction. RPA70 was also immunoprecipitated by a previous lot of this antibody (lot A300-241A-2). For blotting immunoprecipitated RPA70, A300-241A was used at 1 µg/ml. *Detection:* Chemiluminescence with an exposure time of 3 minutes.



Detection of human RPA70 by immunohistochemistry. *Samples:* FFPE serial sections of human ovarian carcinoma. *Antibodies:* Affinity purified rabbit anti-RPA70 Cat. No. A300-241A Lot2 used at a dilution of 1:1,000 (1 µg/ml) (left) and Cat. No. A300-241A Lot3 used at a dilution of 1:5,000 (0.2 µg/ml) (right). *Detection:* DAB

**Detection of mouse RPA70 by immunohistochemistry.**

Samples: FFPE serial sections of mouse teratoma.

Antibodies: Affinity purified rabbit anti-RPA70 Cat. No. A300-241A Lot2 used at a dilution of 1:1,000 (1 µg/ml) (left) and Cat. No. A300-241A Lot3 used at a dilution of 1:5,000 (0.2µg/ml) (right). *Detection:* DAB