



SZABO SCANDIC

Part of Europa Biosite

Produktinformation



Forschungsprodukte & Biochemikalien



Zellkultur & Verbrauchsmaterial



Diagnostik & molekulare Diagnostik



Laborgeräte & Service

Weitere Information auf den folgenden Seiten!
See the following pages for more information!



Lieferung & Zahlungsart

siehe unsere [Liefer- und Versandbedingungen](#)

Zuschläge

- Mindermengenzuschlag
- Trockeneiszuschlag
- Gefahrgutzuschlag
- Expressversand

SZABO-SCANDIC HandelsgmbH

Quellenstraße 110, A-1100 Wien

T. +43(0)1 489 3961-0

F. +43(0)1 489 3961-7

mail@szabo-scandic.com

www.szabo-scandic.com

[linkedin.com/company/szaboscandic](https://www.linkedin.com/company/szaboscandic) 

RPA70 Antibody

Rabbit Polyclonal

Antigen Affinity Purified

Protein ID NP_002936.1

Catalog No. A300-241A

GeneID 6117

Lot No. A300-241A-3



APPLICATIONS	WB, IP, IHC
SPECIES REACTIVITY	Human, Mouse
PRESUMED REACTIVITY	Based on 100% sequence identity, this antibody is predicted to react with Orangutan
AMOUNT	100 µl
CONCENTRATION	1000 µg/ml
STORAGE/SHELF LIFE	2 – 8° C / 1 year from date of receipt
PHYSICAL STATE	Liquid
BUFFER	Tris-citrate/phosphate buffer, pH 7 to 8 containing 0.09% Sodium Azide
ISOTYPE	IgG
ORIGIN	USA
PRODUCTION PROCEDURES	<p>Antibody was affinity purified using an epitope specific to RPA70 immobilized on solid support.</p> <p>The epitope recognized by A300-241A maps to a region between residues 350 and 400 of human replication protein A1, 70kDa using the numbering given in entry NP_002936.1 (GeneID 6117).</p>

Immunoglobulin concentration was determined by extinction coefficient: absorbance at 280 nm of 1.4 equals 1.0 mg of IgG.

APPLICATIONS Centrifuge tube to remove product from lid. Optimal working dilutions should be determined experimentally by the investigator. Prepare working dilution immediately before use.

Western Blot 1:2,000 – 1:10,000

Immunoprecipitation 2 – 10 µg/mg lysate

Immunohistochemistry 1:1,000 – 1:5,000. Epitope retrieval with Tris-EDTA pH 9.0 is recommended for FFPE tissue sections.

APPLICATION NOTES Western blot of immunoprecipitates performed using Normal Pig Serum (Cat. No. S100-020), Goat anti-Rabbit Light Chain HRP Conjugate (Cat. No. A120-113P) and 4-8% SDS-PAGE (link to IP-western blot protocol in Additional Info section below).

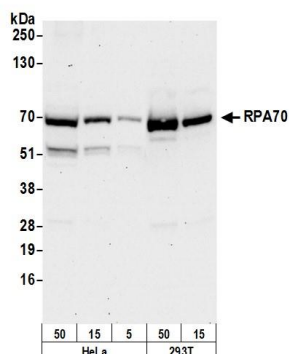
IHC HUMAN CONTROLS Western blot of lysates performed using standard western blot reagents and 4-8% SDS-PAGE. Ovarian Carcinoma, Stomach Adenocarcinoma, Testicular Seminoma

IHC MOUSE CONTROLS Colon Carcinoma CT26, Plasmacytoma, Teratoma

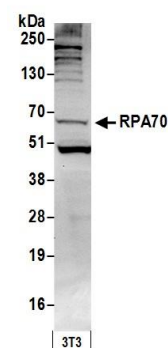
ADDITIONAL INFO <https://www.bethyl.com/product/A300-241A>

Use the link above to view SDS, a current list of citations, and other product specific information.
IP-western blot protocol: https://www.bethyl.com/content/protocol_IP_WB

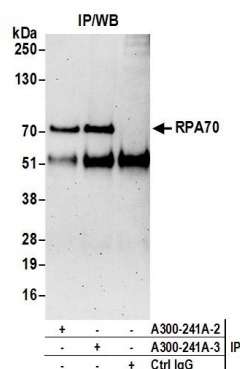
This document certifies that this product has met all of the quality control standards defined by Bethyl Laboratories, Inc.
Eric McIntush, PhD | Chief Scientific Officer Date: June 21, 2019



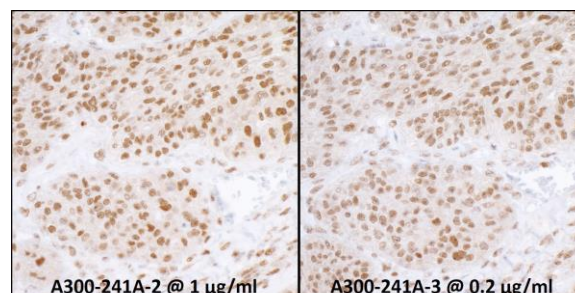
Detection of human RPA70 by western blot. *Samples:* Whole cell lysate (5, 15 and 50 μ g) from HeLa and (15 and 50 μ g) from HEK293T cells prepared using NETN lysis buffer. *Antibody:* Affinity purified rabbit anti-RPA70 antibody A300-241A (lot A300-241A-3) used for WB at 0.1 μ g/ml. *Detection:* Chemiluminescence with an exposure time of 30 seconds.



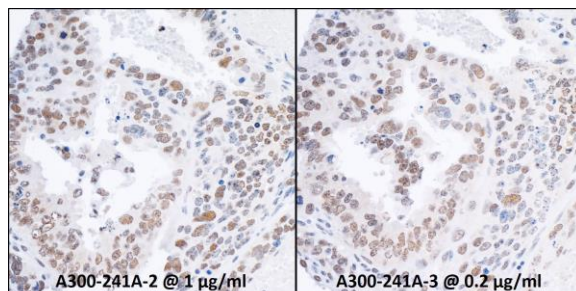
Detection of mouse RPA70 by western blot. *Samples:* Whole cell lysate (50 μ g) from NIH 3T3 cells prepared using NETN lysis buffer. *Antibody:* Affinity purified rabbit anti-RPA70 antibody A300-241A (lot A300-241A-3) used for WB at 0.1 μ g/ml. *Detection:* Chemiluminescence with an exposure time of 30 seconds.



Detection of human RPA70 by western blot of immunoprecipitates. *Samples:* Whole cell lysate (0.5 or 1.0 mg per IP reaction; 20% of IP loaded) from HeLa cells prepared using NETN lysis buffer. *Antibodies:* Affinity purified rabbit anti-RPA70 antibody A300-241A (lot A300-241A-3) used for IP at 6 μ g per reaction. RPA70 was also immunoprecipitated by a previous lot of this antibody (lot A300-241A-2). For blotting immunoprecipitated RPA70, A300-241A was used at 1 μ g/ml. *Detection:* Chemiluminescence with an exposure time of 3 minutes.



Detection of human RPA70 by immunohistochemistry. *Samples:* FFPE serial sections of human ovarian carcinoma. *Antibodies:* Affinity purified rabbit anti-RPA70 Cat. No. A300-241A Lot2 used at a dilution of 1:1,000 (1 μ g/ml) (left) and Cat. No. A300-241A Lot3 used at a dilution of 1:5,000 (0.2 μ g/ml) (right). *Detection:* DAB

**Detection of mouse RPA70 by immunohistochemistry.**

Samples: FFPE serial sections of mouse teratoma.

Antibodies: Affinity purified rabbit anti- RPA70 Cat. No. A300-241A Lot2 used at a dilution of 1:1,000 (1 µg/ml) (left) and Cat. No. A300-241A Lot3 used at a dilution of 1:5,000 (0.2µg/ml) (right). *Detection:* DAB