



# SZABO SCANDIC

Part of Europa Biosite

## Produktinformation



Forschungsprodukte & Biochemikalien



Zellkultur & Verbrauchsmaterial



Diagnostik & molekulare Diagnostik



Laborgeräte & Service

Weitere Information auf den folgenden Seiten!  
See the following pages for more information!



### Lieferung & Zahlungsart

siehe unsere [Liefer- und Versandbedingungen](#)

### Zuschläge

- Mindermengenzuschlag
- Trockeneiszuschlag
- Gefahrgutzuschlag
- Expressversand

### SZABO-SCANDIC HandelsgmbH

Quellenstraße 110, A-1100 Wien

T. +43(0)1 489 3961-0

F. +43(0)1 489 3961-7

[mail@szabo-scandic.com](mailto:mail@szabo-scandic.com)

[www.szabo-scandic.com](http://www.szabo-scandic.com)

[linkedin.com/company/szaboscandic](https://www.linkedin.com/company/szaboscandic) 

# RPA32 Antibody

Rabbit Polyclonal

Antigen Affinity Purified	RefSeq ID	NP_002937.1
Catalog No. A300-244A-T	Uniprot ID	P15927
Lot No. A300-244A-T-4	GeneID	6118

<b>APPLICATIONS</b>	WB, IP, IHC, Flow Cyt
<b>SPECIES REACTIVITY</b>	Human, Mouse
<b>AMOUNT</b>	10 µl
<b>CONCENTRATION</b>	1000 µg/ml
<b>STORAGE/SHELF LIFE</b>	2 – 8°C / 1 year from date of receipt
<b>PHYSICAL STATE</b>	Liquid
<b>BUFFER</b>	Tris-citrate/phosphate buffer, pH 7 to 8 containing 0.09% Sodium Azide
<b>ISOTYPE</b>	IgG
<b>ORIGIN</b>	USA
<b>PRODUCTION PROCEDURES</b>	Antibody was affinity purified using an epitope specific to RPA32 immobilized on solid support.

The epitope recognized by A300-244A-T maps to a region between residue 225 and the C-terminus (residue 270) of human Replication Protein A2 (32kD) using the numbering given in entry NP\_002937.1 (GeneID 6118).

Immunoglobulin concentration was determined by extinction coefficient: absorbance at 280 nm of 1.4 equals 1.0 mg of IgG.

**APPLICATIONS** Centrifuge tube to remove product from lid. Optimal working dilutions should be determined experimentally by the investigator. Prepare working dilution immediately before use.

Western Blot	1:2,000 – 1:10,000
Immunoprecipitation	2 – 10 µg/mg lysate
Immunohistochemistry	1:2,000 to 1:10,000. Epitope retrieval with Tris-EDTA pH9.0 is recommended for FFPE tissue sections.
Flow Cytometry	Fixed in 4% formaldehyde and permeabilized with 90% methanol. 1 µl per 1 x 10 <sup>6</sup> cells

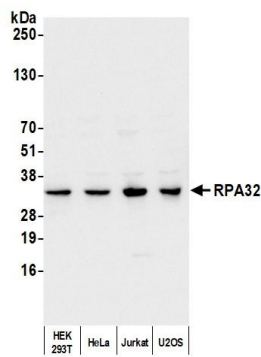
**IHC HUMAN CONTROLS** Breast Carcinoma, Colon Carcinoma, Ovarian Carcinoma, Prostate Carcinoma, Stomach Adenocarcinoma, Testicular Seminoma

**IHC MOUSE CONTROLS** Kidney, Renal Cell Carcinoma, Squamous Cell Carcinoma, Teratoma, CT26 cells

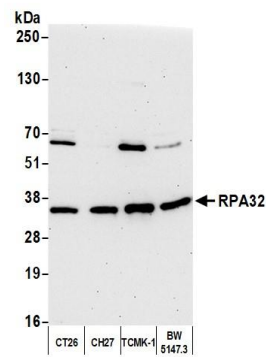
**ADDITIONAL INFO** <https://www.fortislife.com/p/A300-244A-T>

Use the link above to view SDS, a current list of citations, and other product specific information.

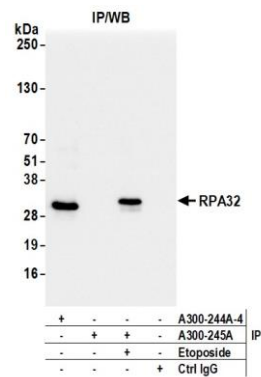
This document certifies that this product has met all of the quality control standards defined by Bethyl Laboratories, Inc.  
Michael Spencer, PhD Date: November 15, 2022



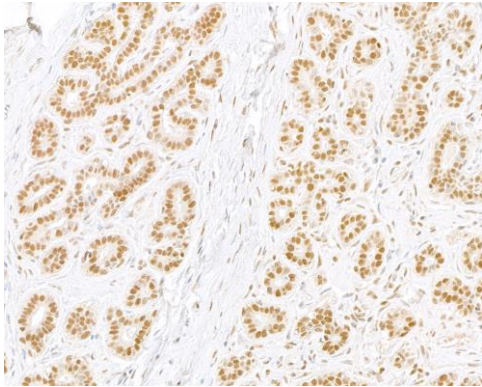
**Detection of human RPA32 by western blot.** *Samples:* Whole cell lysate (10 µg) from HEK293T, HeLa, Jurkat, and U2OS cells prepared using NETN lysis buffer. *Antibody:* Affinity purified rabbit anti-RPA32 antibody (A300-244A lot 4) used for WB at 0.1 µg/ml. *Detection:* Chemiluminescence with an exposure time of 1 second.



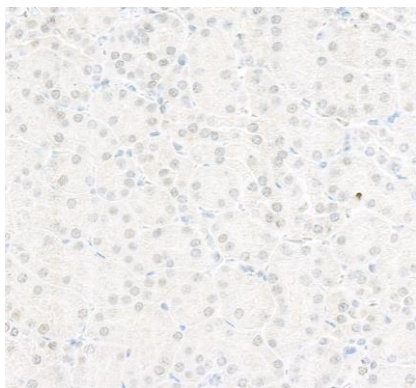
**Detection of mouse RPA32 by western blot.** *Samples:* Whole cell lysate (10 µg) from CT26, CH27, TCMK-1, and BW5147.3 cells prepared using NETN lysis buffer. *Antibody:* Affinity purified rabbit anti-RPA32 antibody (A300-244A lot 4) used for WB at 0.04 µg/ml. *Detection:* Chemiluminescence with an exposure time of 30 seconds.



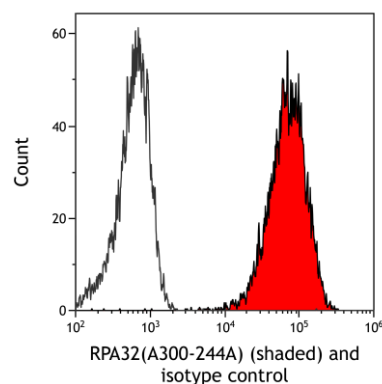
**Detection of human RPA32 by western blot of immunoprecipitates.** *Samples:* Whole cell lysate (1.0 mg per IP reaction; 20% of IP loaded) from HEK293T cells treated with 100 µM etoposide for 4 hours (+) or mock treated (-). *Antibodies:* Affinity purified rabbit anti-RPA32 antibody (A300-244A lot 4) used for IP at 6 µg per reaction. RPA32 was also immunoprecipitated by rabbit anti-Phospho RPA32 (S4/S8) antibody (A300-245A). For blotting immunoprecipitated RPA32, A300-244A was used at 0.04 µg/ml. *Detection:* Chemiluminescence with an exposure time of 1 second.



**Detection of human RPA32 by immunohistochemistry.** *Sample:* FFPE section of human breast carcinoma. *Antibody:* Affinity purified rabbit anti-RPA32 (A300-244A Lot 4) used at a dilution of 1:5,000 (0.2 µg/ml). *Detection:* DAB



**Detection of mouse RPA32 by immunohistochemistry.**  
*Sample:* FFPE section of mouse kidney. *Antibody:* Affinity purified rabbit anti-RPA32 (A300-244A Lot 4) used at a dilution of 1:5,000 (0.2 µg/ml). *Detection:* DAB



**Detection of human RPA32 (shaded) in Jurkat cells by flow cytometry.** *Antibody:* Rabbit anti-RPA32 polyclonal antibody (A300-244A) or isotype control (unshaded). *Secondary:* DyLight® 488-conjugated goat anti-rabbit IgG (A120-101D2).