



SZABO SCANDIC

Part of Europa Biosite

Produktinformation



Forschungsprodukte & Biochemikalien



Zellkultur & Verbrauchsmaterial



Diagnostik & molekulare Diagnostik



Laborgeräte & Service

Weitere Information auf den folgenden Seiten!
See the following pages for more information!



Lieferung & Zahlungsart

siehe unsere [Liefer- und Versandbedingungen](#)

Zuschläge

- Mindermengenzuschlag
- Trockeneiszuschlag
- Gefahrgutzuschlag
- Expressversand

SZABO-SCANDIC Handels GmbH

Quellenstraße 110, A-1100 Wien

T. +43(0)1 489 3961-0

F. +43(0)1 489 3961-7

mail@szabo-scandic.com

www.szabo-scandic.com

[linkedin.com/company/szaboscandic](https://www.linkedin.com/company/szaboscandic)



RPA32 Antibody

Rabbit Polyclonal

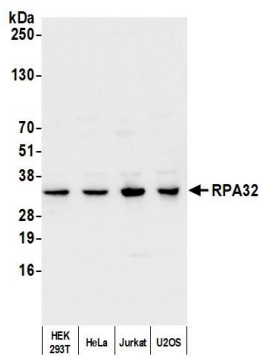
| | | |
|---------------------------|------------|-------------|
| Antigen Affinity Purified | RefSeq ID | NP_002937.1 |
| Catalog No. A300-244A | Uniprot ID | P15927 |
| Lot No. A300-244A-4 | GeneID | 6118 |

| | |
|------------------------------|-----------------------------------------------------------------------------------------------------------------------------------------------------------------------------------------------------------------------------------------------------------------------------------------------------------------------|
| APPLICATIONS | WB, IP, IHC, Flow Cyt |
| SPECIES REACTIVITY | Human, Mouse |
| AMOUNT | 100 µl |
| CONCENTRATION | 1000 µg/ml |
| STORAGE/SHELF LIFE | 2 – 8°C / 1 year from date of receipt |
| PHYSICAL STATE | Liquid |
| BUFFER | Tris-citrate/phosphate buffer, pH 7 to 8 containing 0.09% Sodium Azide |
| ISOTYPE | IgG |
| ORIGIN | USA |
| PRODUCTION PROCEDURES | Antibody was affinity purified using an epitope specific to RPA32 immobilized on solid support. The epitope recognized by A300-244A maps to a region between residue 225 and the C-terminus (residue 270) of human Replication Protein A2 (32kD) using the numbering given in entry NP_002937.1 (GeneID 6118). |

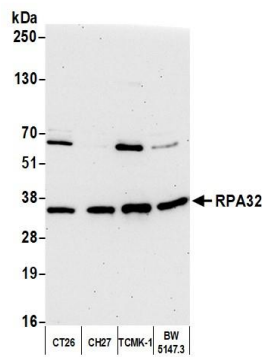
Immunoglobulin concentration was determined by extinction coefficient: absorbance at 280 nm of 1.4 equals 1.0 mg of IgG.

| | |
|---------------------------|-------------------------------------------------------------------------------------------------------------------------------------------------------------------------------------------------------------------------------------------------------------------------------------------------------------------------------------------------------------------------------------------------------------------------------------------------------------------------------------------------------------------------------|
| APPLICATIONS | Centrifuge tube to remove product from lid. Optimal working dilutions should be determined experimentally by the investigator. Prepare working dilution immediately before use. Western Blot 1:2,000 – 1:10,000 Immunoprecipitation 2 – 10 µg/mg lysate Immunohistochemistry 1:2,000 to 1:10,000. Epitope retrieval with Tris-EDTA pH9.0 is recommended for FFPE tissue sections. Flow Cytometry Fixed in 4% formaldehyde and permeabilized with 90% methanol. 1 µl per 1 x 10 ⁶ cells |
| IHC HUMAN CONTROLS | Breast Carcinoma, Colon Carcinoma, Ovarian Carcinoma, Prostate Carcinoma, Stomach Adenocarcinoma, Testicular Seminoma |
| IHC MOUSE CONTROLS | Kidney, Renal Cell Carcinoma, Squamous Cell Carcinoma, Teratoma, CT26 cells |
| ADDITIONAL INFO | https://www.fortislife.com/p/A300-244A Use the link above to view SDS, a current list of citations, and other product specific information. |

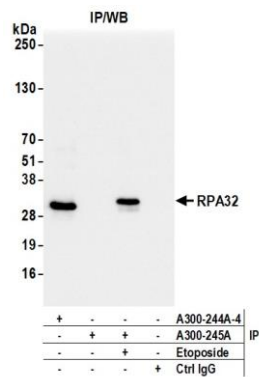
This document certifies that this product has met all of the quality control standards defined by Bethyl Laboratories, Inc.
Michael Spencer, PhD Date: November 15, 2022



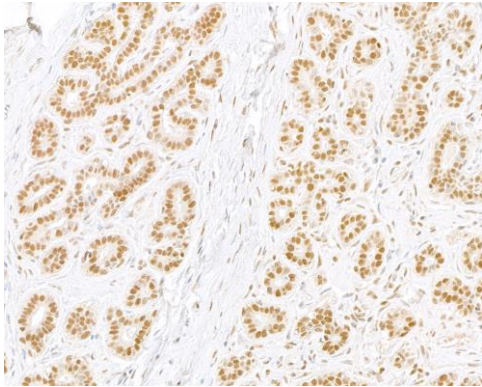
Detection of human RPA32 by western blot. *Samples:* Whole cell lysate (10 µg) from HEK293T, HeLa, Jurkat, and U2OS cells prepared using NETN lysis buffer. *Antibody:* Affinity purified rabbit anti-RPA32 antibody (A300-244A lot 4) used for WB at 0.1 µg/ml. *Detection:* Chemiluminescence with an exposure time of 1 second.



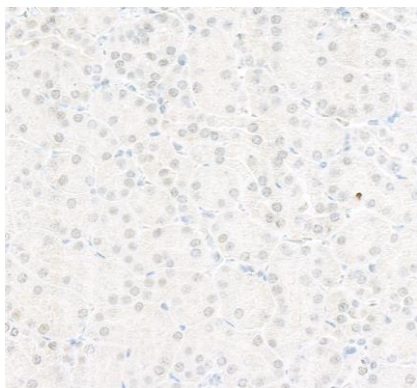
Detection of mouse RPA32 by western blot. *Samples:* Whole cell lysate (10 µg) from CT26, CH27, TCMK-1, and BW5147.3 cells prepared using NETN lysis buffer. *Antibody:* Affinity purified rabbit anti-RPA32 antibody (A300-244A lot 4) used for WB at 0.04 µg/ml. *Detection:* Chemiluminescence with an exposure time of 30 seconds.



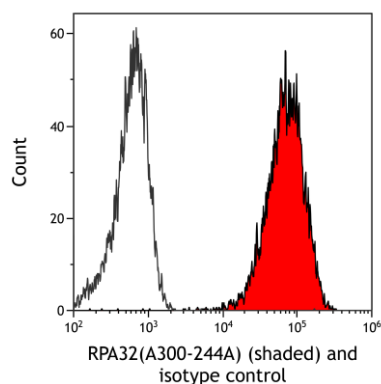
Detection of human RPA32 by western blot of immunoprecipitates. *Samples:* Whole cell lysate (1.0 mg per IP reaction; 20% of IP loaded) from HEK293T cells treated with 100 µM etoposide for 4 hours (+) or mock treated (-). *Antibodies:* Affinity purified rabbit anti-RPA32 antibody (A300-244A lot 4) used for IP at 6 µg per reaction. RPA32 was also immunoprecipitated by rabbit anti-Phospho RPA32 (S4/S8) antibody (A300-245A). For blotting immunoprecipitated RPA32, A300-244A was used at 0.04 µg/ml. *Detection:* Chemiluminescence with an exposure time of 1 second.



Detection of human RPA32 by immunohistochemistry. *Sample:* FFPE section of human breast carcinoma. *Antibody:* Affinity purified rabbit anti-RPA32 (A300-244A Lot 4) used at a dilution of 1:5,000 (0.2 µg/ml). *Detection:* DAB



Detection of mouse RPA32 by immunohistochemistry.
Sample: FFPE section of mouse kidney. *Antibody:* Affinity purified rabbit anti-RPA32 (A300-244A Lot 4) used at a dilution of 1:5,000 (0.2 µg/ml). *Detection:* DAB



Detection of human RPA32 (shaded) in Jurkat cells by flow cytometry. *Antibody:* Rabbit anti-RPA32 polyclonal antibody (A300-244A) or isotype control (unshaded). *Secondary:* DyLight® 488-conjugated goat anti-rabbit IgG (A120-101D2).