



SZABO SCANDIC

Part of Europa Biosite

Produktinformation



Forschungsprodukte & Biochemikalien



Zellkultur & Verbrauchsmaterial



Diagnostik & molekulare Diagnostik



Laborgeräte & Service

Weitere Information auf den folgenden Seiten!
See the following pages for more information!



Lieferung & Zahlungsart

siehe unsere [Liefer- und Versandbedingungen](#)

Zuschläge

- Mindermengenzuschlag
- Trockeneiszuschlag
- Gefahrgutzuschlag
- Expressversand

SZABO-SCANDIC HandelsgmbH

Quellenstraße 110, A-1100 Wien

T. +43(0)1 489 3961-0

F. +43(0)1 489 3961-7

mail@szabo-scandic.com

www.szabo-scandic.com

[linkedin.com/company/szaboscandic](https://www.linkedin.com/company/szaboscandic) 

Phospho RPA32 (S4/S8) Antibody

Rabbit Polyclonal

Antigen Affinity Purified	RefSeq ID	NP_002937.1
Catalog No. A300-245A-T	Uniprot ID	P15927
Lot No. A300-245A-T-9	GeneID	6118

APPLICATIONS	WB, IP, IHC, ICC-IF
SPECIES REACTIVITY	Human, Mouse
PRESUMED REACTIVITY	Based on 100% sequence identity, this antibody is predicted to react with Orangutan
AMOUNT	10 µl
CONCENTRATION	1000 µg/ml
STORAGE/SHELF LIFE	2 – 8°C / 1 year from date of receipt
PHYSICAL STATE	Liquid
BUFFER	Tris-citrate/phosphate buffer, pH 7 to 8 containing 0.09% Sodium Azide
ISOTYPE	IgG
ORIGIN	USA
PRODUCTION PROCEDURES	Antibody was affinity purified using the peptide immobilized on solid support. Immunogen was a dually phosphorylated synthetic peptide, which represented a portion of human replication protein A2, 32 kDa surrounding phosphorylated serines that corresponded to positions 4 and 8 using the numbering given in entry NP_002937.1 (GeneID 6118).

Immunoglobulin concentration was determined by extinction coefficient: absorbance at 280 nm of 1.4 equals 1.0 mg of IgG.

APPLICATIONS Centrifuge tube to remove product from lid. Optimal working dilutions should be determined experimentally by the investigator. Prepare working dilution immediately before use.

Western Blot	1:2,000 – 1:10,000
Immunoprecipitation	2 – 10 µg/mg lysate
Immunohistochemistry	1:500 to 1:2,000. Epitope retrieval with citrate buffer pH6.0 is recommended for FFPE tissue sections.
Immunofluorescence (ICC)	1:500 – 1:5,000

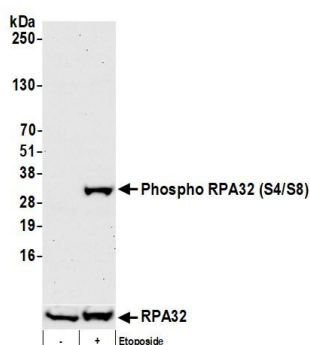
IHC HUMAN CONTROLS Breast Carcinoma, Ovarian Carcinoma, Prostate Carcinoma, HeLa Cells

IHC MOUSE CONTROLS Intestine, Renal Cell Carcinoma, Small Intestine, Teratoma, CT26 cells

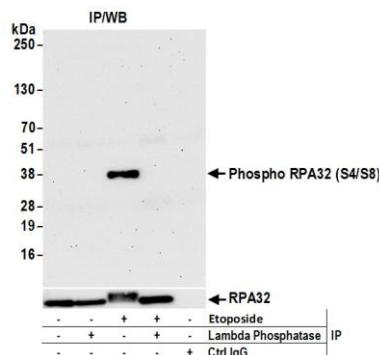
ADDITIONAL INFO <https://www.fortislife.com/p/A300-245A-T>

Use the link above to view SDS, a current list of citations, and other product specific information.

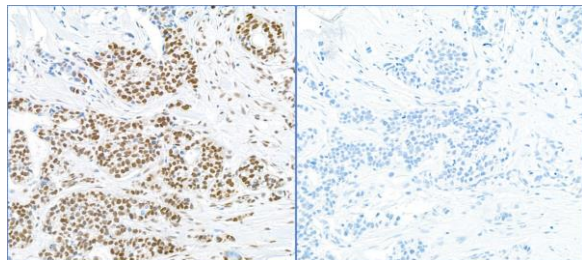
This document certifies that this product has met all of the quality control standards defined by Bethyl Laboratories, Inc.
Michael Spencer, PhD Date: November 15, 2022



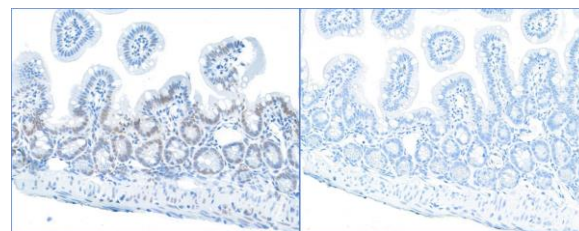
Detection of human Phospho RPA32 (S4/S8) by western blot. *Samples:* Whole cell lysate (50 µg) from BeWo and AlphaTC1 Clone 9 cells prepared using NETN lysis buffer. *Antibody:* Affinity purified rabbit anti-Phospho RPA32 (S4/S8) antibody (A300-245A lot 9) used for WB at 0.1 µg/ml. *Detection:* Chemiluminescence with an exposure time of 30 seconds.



Detection of human Phospho RPA32 (S4/S8) by western blot of immunoprecipitates. *Samples:* Whole cell lysate (1.0 mg per IP reaction; 20% of IP loaded) from HeLa cells treated with or without etoposide. *Antibodies:* Affinity purified rabbit anti-Phospho RPA32 (S4/S8) antibody (A300-245A lot 9) used for IP at 6 µg per reaction followed by treatment with Lambda phosphatase (+) or mock treated (-). For blotting immunoprecipitated Phospho RPA32 (S4/S8), A300-245A was used at 0.1 µg/ml. *Detection:* Chemiluminescence with an exposure time of 75 seconds. Lower Panel: Rabbit anti-RPA32 antibody (A300-244A).



Detection of human Phospho RPA32 (S4/S8) by immunohistochemistry. *Sample:* FFPE section of human breast carcinoma, MOCK treatment (left) and CIP treatment (right). *Antibody:* Affinity purified rabbit anti-Phospho RPA32 (S4/S8) ((A300-245A lot 9)) used at a dilution of 1:1,000 (1 µg/ml). *Detection:* DAB



Detection of mouse Phospho RPA32 (S4/S8) by immunohistochemistry. *Sample:* FFPE section of mouse gut, MOCK treatment (left) and CIP treatment (right). *Antibody:* Affinity purified rabbit anti-Phospho RPA32 (S4/S8) ((A300-245A lot 9)) used at a dilution of 1:1,000 (1 µg/ml). *Detection:* DAB