



SZABO SCANDIC

Part of Europa Biosite

Produktinformation



Forschungsprodukte & Biochemikalien



Zellkultur & Verbrauchsmaterial



Diagnostik & molekulare Diagnostik



Laborgeräte & Service

Weitere Information auf den folgenden Seiten!
See the following pages for more information!



Lieferung & Zahlungsart

siehe unsere [Liefer- und Versandbedingungen](#)

Zuschläge

- Mindermengenzuschlag
- Trockeneiszuschlag
- Gefahrgutzuschlag
- Expressversand

SZABO-SCANDIC HandelsgmbH

Quellenstraße 110, A-1100 Wien

T. +43(0)1 489 3961-0

F. +43(0)1 489 3961-7

mail@szabo-scandic.com

www.szabo-scandic.com

[linkedin.com/company/szaboscandic](https://www.linkedin.com/company/szaboscandic) 

p53 Antibody

Rabbit Polyclonal

Antigen Affinity Purified	Protein ID	P04637
Catalog No. A300-247A-T	GenelD	7157
Lot No. A300-247A-T-2		

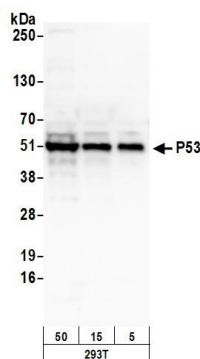
APPLICATIONS	WB, IP, IHC, ChIP-Seq, F
SPECIES REACTIVITY	Human
AMOUNT	10 µl
CONCENTRATION	1000 µg/ml
STORAGE/SHELF LIFE	2 – 8°C / 1 year from date of receipt
PHYSICAL STATE	Liquid
BUFFER	Tris-citrate/phosphate buffer, pH 7 to 8 containing 0.09% Sodium Azide
ISOTYPE	IgG
ORIGIN	USA
PRODUCTION PROCEDURES	Antibody was affinity purified using an epitope specific to p53 immobilized on solid support. The epitope recognized by A300-247A-T maps to a region between residues 50 and 100 of human tumor protein p53 using the numbering given in SwissProt entry P04637 (GenelD 7157). Immunoglobulin concentration was determined by extinction coefficient: absorbance at 280 nm of 1.4 equals 1.0 mg of IgG.

APPLICATIONS Centrifuge tube to remove product from lid. Optimal working dilutions should be determined experimentally by the investigator. Prepare working dilution immediately before use.

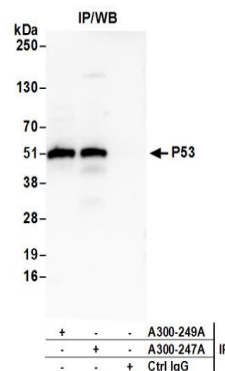
Western Blot	1:2,000 – 1:10,000
Immunoprecipitation	2 – 5 µg/mg lysate
Immunohistochemistry	1:1,000 – 1:5,000. Epitope retrieval with citrate buffer pH 6.0 is recommended for FFPE tissue sections.
ChIP-Seq	4 µg/30 µg chromatin
Flow Cytometry	1.5 µg per 1 X 10 ⁶ cells in a 150 µl volume

ADDITIONAL INFO <https://www.bethyl.com/product/A300-247A-T>
Use the link above to view SDS, a current list of citations, and other product specific information.
IP-western blot protocol: https://www.bethyl.com/content/protocol_IP_WB

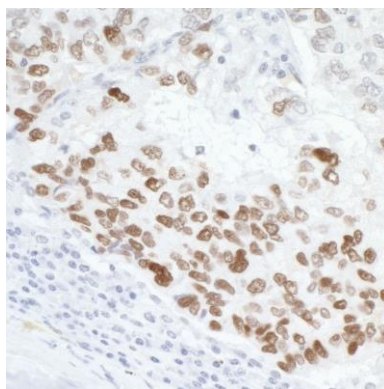
This document certifies that this product has met all of the quality control standards defined by Bethyl Laboratories, Inc.
Michael Spencer, PhD Date: June 6, 2022



Detection of human P53 by western blot. *Samples:* Whole cell lysate (5, 15 and 50 μ g) from HEK293T cells prepared using NETN lysis buffer. *Antibody:* Affinity purified rabbit anti-P53 antibody A300-247A (lot A300-247A-2) used for WB at 0.1 μ g/ml. *Detection:* Chemiluminescence with an exposure time of 30 seconds.

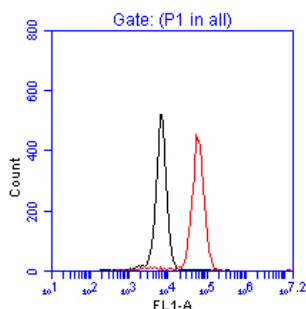


Detection of human P53 by western blot of immunoprecipitates. *Samples:* Whole cell lysate (1.0 mg per IP reaction; 20% of IP loaded) from HEK293T cells prepared using NETN lysis buffer. *Antibodies:* Affinity purified rabbit anti-P53 antibody A300-247A (lot A300-247A-2) used for IP at 3 μ g per reaction. P53 was also immunoprecipitated by rabbit anti-P53 antibody A300-249A. For blotting immunoprecipitated P53, A300-247A was used at 1 μ g/ml. *Detection:* Chemiluminescence with an exposure time of 30 seconds.

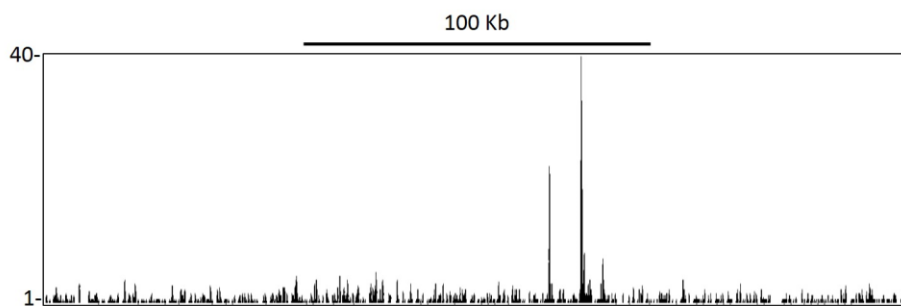


Detection of human p53 by immunohistochemistry.

Sample: FFPE section of human lung cancer *Antibody:* Affinity purified rabbit anti-p53 (Cat. No. A300-247A Lot2) used at 1:5,000 (0.2 μ g/ml). *Detection:* DAB



Flow Cytometrical Analysis of p53 in Jurkat Cells. Jurkat cells were fixed in 1.5% PFA, and permeabilized in 90% Methanol. 1×10^6 cells were stained with 1.5 μ g anti-KLH IgG control or anti-p53 [A300-247A] and secondary FITC-conjugated goat anti-rabbit (in a 150 μ l reaction). anti-KLH control IgG (black); anti-p53 (red).



Localization of p53 Binding Sites by ChIP-sequencing. Chromatin from MCF-7 was immunoprecipitated with anti-p53 antibody A300-247A and analyzed by DNA sequencing. The figure illustrates the peak distribution of p53 binding within a 250 Kb region of chromosome 6 as detected using anti-p53 A300-247A. ChIP-seq validation performed by Active Motif, Carlsbad, CA.