



SZABO SCANDIC

Part of Europa Biosite

Produktinformation



Forschungsprodukte & Biochemikalien



Zellkultur & Verbrauchsmaterial



Diagnostik & molekulare Diagnostik



Laborgeräte & Service

Weitere Information auf den folgenden Seiten!
See the following pages for more information!



Lieferung & Zahlungsart

siehe unsere [Liefer- und Versandbedingungen](#)

Zuschläge

- Mindermengenzuschlag
- Trockeneiszuschlag
- Gefahrgutzuschlag
- Expressversand

SZABO-SCANDIC HandelsgmbH

Quellenstraße 110, A-1100 Wien

T. +43(0)1 489 3961-0

F. +43(0)1 489 3961-7

mail@szabo-scandic.com

www.szabo-scandic.com

[linkedin.com/company/szaboscandic](https://www.linkedin.com/company/szaboscandic) 

p53 Antibody

Rabbit Polyclonal

Antigen Affinity Purified

Protein ID P04637

Catalog No. A300-247A

GeneID 7157

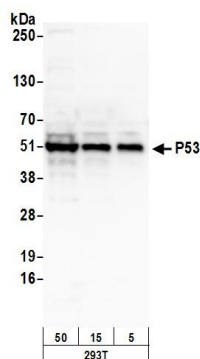
Lot No. A300-247A-2



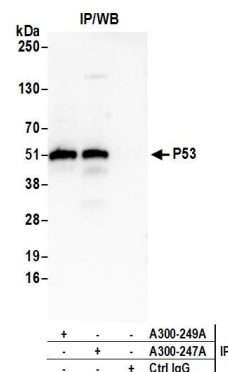
| | | | | | | | | | | | |
|------------------------------|--|--------------|--------------------|---------------------|--------------------|----------------------|--|----------|----------------------|----------------|---|
| APPLICATIONS | WB, IP, IHC, ChIP-Seq, F | | | | | | | | | | |
| SPECIES REACTIVITY | Human | | | | | | | | | | |
| AMOUNT | 100 µl | | | | | | | | | | |
| CONCENTRATION | 1000 µg/ml | | | | | | | | | | |
| STORAGE/SHELF LIFE | 2 – 8° C / 1 year from date of receipt | | | | | | | | | | |
| PHYSICAL STATE | Liquid | | | | | | | | | | |
| BUFFER | Tris-citrate/phosphate buffer, pH 7 to 8 containing 0.09% Sodium Azide | | | | | | | | | | |
| ISOTYPE | IgG | | | | | | | | | | |
| ORIGIN | USA | | | | | | | | | | |
| PRODUCTION PROCEDURES | <p>Antibody was affinity purified using an epitope specific to p53 immobilized on solid support.</p> <p>The epitope recognized by A300-247A maps to a region between residues 50 and 100 of human tumor protein p53 using the numbering given in SwissProt entry P04637 (GeneID 7157).</p> <p>Immunoglobulin concentration was determined by extinction coefficient: absorbance at 280 nm of 1.4 equals 1.0 mg of IgG.</p> | | | | | | | | | | |
| APPLICATIONS | <p>Centrifuge tube to remove product from lid. Optimal working dilutions should be determined experimentally by the investigator. Prepare working dilution immediately before use.</p> <table><tr><td>Western Blot</td><td>1:2,000 – 1:10,000</td></tr><tr><td>Immunoprecipitation</td><td>2 – 5 µg/mg lysate</td></tr><tr><td>Immunohistochemistry</td><td>1:1,000 – 1:5,000. Epitope retrieval with citrate buffer pH 6.0 is recommended for FFPE tissue sections.</td></tr><tr><td>ChIP-Seq</td><td>4 µg/30 µg chromatin</td></tr><tr><td>Flow Cytometry</td><td>1.5 µg per 1 X 10⁶ cells in a 150 µl volume</td></tr></table> | Western Blot | 1:2,000 – 1:10,000 | Immunoprecipitation | 2 – 5 µg/mg lysate | Immunohistochemistry | 1:1,000 – 1:5,000. Epitope retrieval with citrate buffer pH 6.0 is recommended for FFPE tissue sections. | ChIP-Seq | 4 µg/30 µg chromatin | Flow Cytometry | 1.5 µg per 1 X 10 ⁶ cells in a 150 µl volume |
| Western Blot | 1:2,000 – 1:10,000 | | | | | | | | | | |
| Immunoprecipitation | 2 – 5 µg/mg lysate | | | | | | | | | | |
| Immunohistochemistry | 1:1,000 – 1:5,000. Epitope retrieval with citrate buffer pH 6.0 is recommended for FFPE tissue sections. | | | | | | | | | | |
| ChIP-Seq | 4 µg/30 µg chromatin | | | | | | | | | | |
| Flow Cytometry | 1.5 µg per 1 X 10 ⁶ cells in a 150 µl volume | | | | | | | | | | |
| APPLICATION NOTES | <p>Western blot of immunoprecipitates performed using Normal Pig Serum (Cat. No. S100-020), Goat anti-Rabbit Light Chain HRP Conjugate (Cat. No. A120-113P) and 4-20% SDS-PAGE (link to IP-western blot protocol in Additional Info section below).</p> <p>Western blot of lysates performed using standard western blot reagents and 4-20% SDS-PAGE.</p> | | | | | | | | | | |
| IHC HUMAN CONTROLS | Skin Squamous Cell Carcinoma | | | | | | | | | | |
| ADDITIONAL INFO | <p>https://www.bethyl.com/product/A300-247A</p> <p>Use the link above to view SDS, a current list of citations, and other product specific information.</p> <p>IP-western blot protocol: https://www.bethyl.com/content/protocol_IP_WB</p> | | | | | | | | | | |

This document certifies that this product has met all of the quality control standards defined by Bethyl Laboratories, Inc.
Eric McIntush, PhD | Chief Scientific Officer

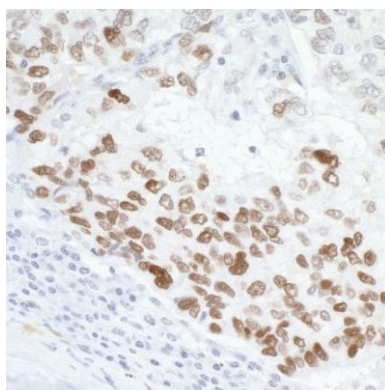
Date: June 21, 2019



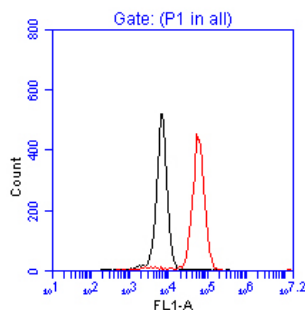
Detection of human P53 by western blot. *Samples:* Whole cell lysate (5, 15 and 50 µg) from HEK293T cells prepared using NETN lysis buffer. *Antibody:* Affinity purified rabbit anti-P53 antibody A300-247A (lot A300-247A-2) used for WB at 0.1 µg/ml. *Detection:* Chemiluminescence with an exposure time of 30 seconds.



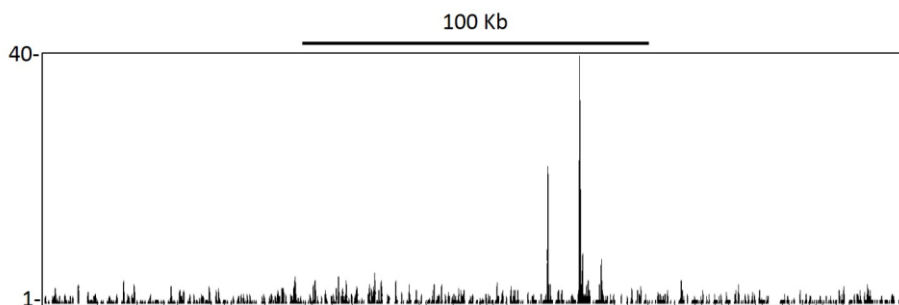
Detection of human P53 by western blot of immunoprecipitates. *Samples:* Whole cell lysate (1.0 mg per IP reaction; 20% of IP loaded) from HEK293T cells prepared using NETN lysis buffer. *Antibodies:* Affinity purified rabbit anti-P53 antibody A300-247A (lot A300-247A-2) used for IP at 3 µg per reaction. P53 was also immunoprecipitated by rabbit anti-P53 antibody A300-249A. For blotting immunoprecipitated P53, A300-247A was used at 1 µg/ml. *Detection:* Chemiluminescence with an exposure time of 30 seconds.



Detection of human p53 by immunohistochemistry. *Sample:* FFPE section of human lung cancer *Antibody:* Affinity purified rabbit anti- p53 (Cat. No. A300-247A Lot2) used at 1:5,000 (0.2µg/ml). *Detection:* DAB



Flow Cytometrical Analysis of p53 in Jurkat Cells. Jurkat cells were fixed in 1.5% PFA, and permeabilized in 90% Methanol. 1×10^6 cells were stained with 1.5 μ g anti-KLH IgG control or anti-p53 [A300-247A] and secondary FITC-conjugated goat anti-rabbit (in a 150 μ l reaction). anti-KLH control IgG (black); anti-p53 (red).



Localization of p53 Binding Sites by ChIP-sequencing. Chromatin from MCF-7 was immunoprecipitated with anti-p53 antibody A300-247A and analyzed by DNA sequencing. The figure illustrates the peak distribution of p53 binding within a 250 Kb region of chromosome 6 as detected using anti-p53 A300-247A. ChIP-seq validation performed by Active Motif, Carlsbad, CA.