



SZABO SCANDIC

Part of Europa Biosite

Produktinformation



Forschungsprodukte & Biochemikalien



Zellkultur & Verbrauchsmaterial



Diagnostik & molekulare Diagnostik



Laborgeräte & Service

Weitere Information auf den folgenden Seiten!
See the following pages for more information!



Lieferung & Zahlungsart

siehe unsere [Liefer- und Versandbedingungen](#)

Zuschläge

- Mindermengenzuschlag
- Trockeneiszuschlag
- Gefahrgutzuschlag
- Expressversand

SZABO-SCANDIC Handels GmbH

Quellenstraße 110, A-1100 Wien

T. +43(0)1 489 3961-0

F. +43(0)1 489 3961-7

mail@szabo-scandic.com

www.szabo-scandic.com

[linkedin.com/company/szaboscandic](https://www.linkedin.com/company/szaboscandic) 

PLK1 Antibody

Rabbit Polyclonal

Antigen Affinity Purified

Protein ID P53350

Catalog No. A300-250A-T

GeneID 5347

Lot No. A300-250A-T-2

APPLICATIONS WB, IP

SPECIES REACTIVITY Human

PRESUMED REACTIVITY Based on 100% sequence identity, this antibody is predicted to react with Mouse

AMOUNT 10 µl

CONCENTRATION 1000 µg/ml

STORAGE/SHELF LIFE 2 – 8°C / 1 year from date of receipt

PHYSICAL STATE Liquid

BUFFER Tris-citrate/phosphate buffer, pH 7 to 8 containing 0.09% Sodium Azide

ISOTYPE IgG

ORIGIN USA

PRODUCTION PROCEDURES Antibodies were affinity purified using epitopes specific to PLK1 immobilized on solid support. The epitopes recognized by A300-250A-T maps to a region between residues 1 and 50 of human Polo-like kinase 1 using the numbering given in SwissProt entry P53350 (GeneID 5347).

Immunoglobulin concentration was determined by extinction coefficient: absorbance at 280 nm of 1.4 equals 1.0 mg of IgG.

APPLICATIONS Centrifuge tube to remove product from lid. Optimal working dilutions should be determined experimentally by the investigator. Prepare working dilution immediately before use.

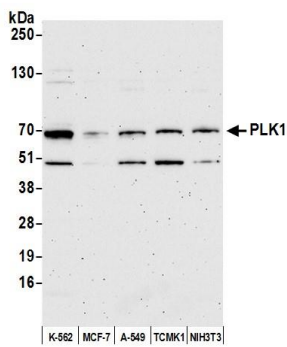
Western Blot 1:2,000 – 1:10,000

Immunoprecipitation 2 – 10 µg/mg lysate.

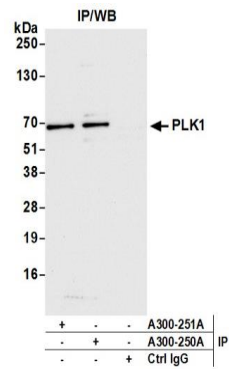
ADDITIONAL INFO <https://www.bethyl.com/product/A300-250A-T>

Use the link above to view SDS, a current list of citations, and other product specific information.
IP-western blot protocol: https://www.bethyl.com/content/protocol_IP_WB

This document certifies that this product has met all of the quality control standards defined by Bethyl Laboratories, Inc.
Michael Spencer, PhD Date: June 6, 2022



Detection of human and mouse PLK1 by western blot.
Samples: Whole cell lysate (10 µg) from K-562, MCF-7, A-549, TCMK-1, and NIH 3T3 cells prepared using NETN lysis buffer. *Antibody:* Affinity purified rabbit anti-PLK1 antibody A300-250A (lot A300-250A-2) used for WB at 0.04 µg/ml. *Detection:* Chemiluminescence with an exposure time of 3 minutes.



Detection of human PLK1 by western blot of immunoprecipitates. *Samples:* Whole cell lysate (1.0 mg per IP reaction; 20% of IP loaded) from K-562 cells prepared using NETN lysis buffer. *Antibodies:* Affinity purified rabbit anti-PLK1 antibody A300-250A (lot A300-250A-2) used for IP at 6 µg per reaction. PLK1 was also immunoprecipitated by rabbit anti-PLK1 antibody A300-251A. For blotting immunoprecipitated PLK1, A300-250A was used at 0.04 µg/ml. *Detection:* Chemiluminescence with an exposure time of 10 seconds.