



SZABO SCANDIC

Part of Europa Biosite

Produktinformation



Forschungsprodukte & Biochemikalien



Zellkultur & Verbrauchsmaterial



Diagnostik & molekulare Diagnostik



Laborgeräte & Service

Weitere Information auf den folgenden Seiten!
See the following pages for more information!



Lieferung & Zahlungsart

siehe unsere [Liefer- und Versandbedingungen](#)

Zuschläge

- Mindermengenzuschlag
- Trockeneiszuschlag
- Gefahrgutzuschlag
- Expressversand

SZABO-SCANDIC HandelsgmbH

Quellenstraße 110, A-1100 Wien

T. +43(0)1 489 3961-0

F. +43(0)1 489 3961-7

mail@szabo-scandic.com

www.szabo-scandic.com

[linkedin.com/company/szaboscandic](https://www.linkedin.com/company/szaboscandic) 

PLK1 Antibody

Rabbit Polyclonal

Antigen Affinity Purified Protein ID P53350

Catalog No. A300-251A-T GeneID 5347

Lot No. A300-251A-T-1

APPLICATIONS WB, IP, ICC-IF

SPECIES REACTIVITY Human

AMOUNT 10 µl

CONCENTRATION 1000 µg/ml

STORAGE/SHELF LIFE 2 – 8°C / 1 year from date of receipt

PHYSICAL STATE Liquid

BUFFER Tris-citrate/phosphate buffer, pH 7 to 8 containing 0.09% Sodium Azide

ISOTYPE IgG

ORIGIN USA

PRODUCTION PROCEDURES Antibodies were affinity purified using epitopes specific to PLK1 immobilized on solid support. The epitopes recognized by A300-251A-T maps to a region between residues 325 and 375 of human Polo-like kinase using the numbering given in SwissProt entry P53350 (GeneID 5347).

Immunoglobulin concentration was determined by extinction coefficient: absorbance at 280 nm of 1.4 equals 1.0 mg of IgG.

APPLICATIONS Centrifuge tube to remove product from lid. Optimal working dilutions should be determined experimentally by the investigator. Prepare working dilution immediately before use.

Western Blot 1:1,000 – 1:10,000

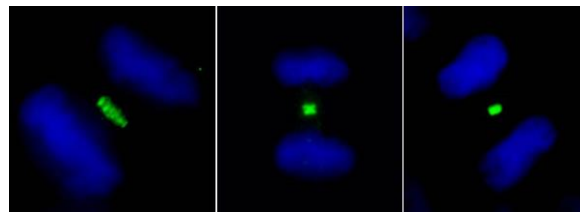
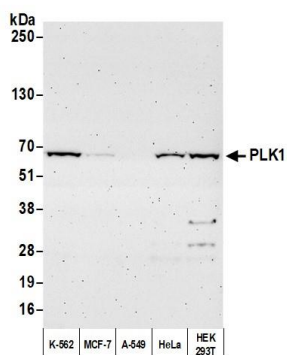
Immunoprecipitation 2 – 4 µg/mg lysate

Immunofluorescence (ICC) 1:500 – 1:2,000. Formaldehyde fixation is recommended. Permeabilization with Triton-X 100 is recommended for formaldehyde-fixed cells.

ADDITIONAL INFO <https://www.bethyl.com/product/A300-251A-T>

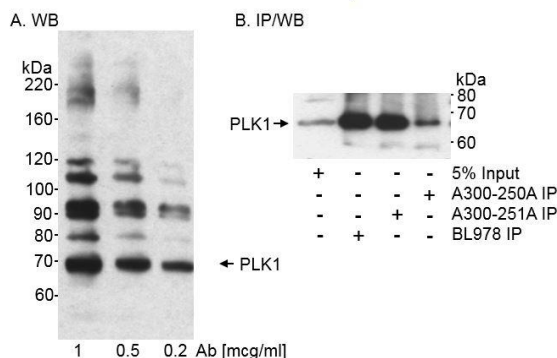
Use the link above to view SDS, a current list of citations, and other product specific information. IP-western blot protocol: https://www.bethyl.com/content/protocol_IP_WB

This document certifies that this product has met all of the quality control standards defined by Bethyl Laboratories, Inc.
Michael Spencer, PhD Date: June 6, 2022



Detection of human PLK1 by western blot. *Samples:* Whole cell lysate (50 µg) from HeLa and mouse NIH 3T3 cells prepared using NETN lysis buffer. *Antibody:* Affinity purified rabbit anti-PLK1 antibody A300-251A (lot A300-251A-1) used for WB at 0.1 µg/ml. *Detection:* Chemiluminescence with an exposure time of 3 minutes.

Detection of human PLK1 by immunocytochemistry. *Sample:* Formaldehyde-fixed asynchronous HeLa cells. *Antibody:* Affinity purified rabbit anti-PLK1 (Cat. No. A300-251A Lot1) used at a dilution of 1:1,000 (1 µg/ml). *Detection:* Green fluorescent goat anti-rabbit IgG highly cross-adsorbed Antibody FITC conjugated (Cat. No. A120-501F) used at a dilution of 1:100.



Detection of human PLK1 by western blot and immunoprecipitation. *Samples:* Whole cell lysate (50 µg for A; 600 µg for B) from HeLa cells. *Antibodies:* A. Affinity purified rabbit anti-PLK1 antibody A300-251A used at the indicated concentrations for WB. B. Affinity purified rabbit anti-PLK1 antibodies A300-250A, A300-251A, and BL978 used at 2 µg/600 µg lysate for IP. immunoprecipitatesd PLK1 was detected using BL978 at 0.5 µg/ml. *Detection:* Chemiluminescence with exposure times of less than 5 minutes.