



SZABO SCANDIC

Part of Europa Biosite

Produktinformation



Forschungsprodukte & Biochemikalien



Zellkultur & Verbrauchsmaterial



Diagnostik & molekulare Diagnostik



Laborgeräte & Service

Weitere Information auf den folgenden Seiten!
See the following pages for more information!



Lieferung & Zahlungsart

siehe unsere [Liefer- und Versandbedingungen](#)

Zuschläge

- Mindermengenzuschlag
- Trockeneiszuschlag
- Gefahrgutzuschlag
- Expressversand

SZABO-SCANDIC HandelsgmbH

Quellenstraße 110, A-1100 Wien

T. +43(0)1 489 3961-0

F. +43(0)1 489 3961-7

mail@szabo-scandic.com

www.szabo-scandic.com

[linkedin.com/company/szaboscandic](https://www.linkedin.com/company/szaboscandic) 

PLK1 Antibody

Rabbit Polyclonal

Antigen Affinity Purified

Protein ID P53350

Catalog No. A300-251A

GeneID 5347

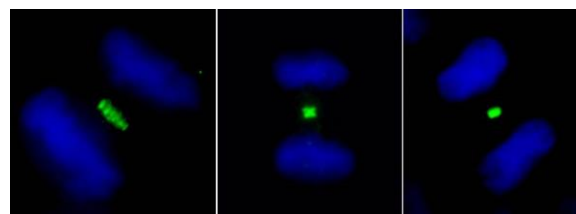
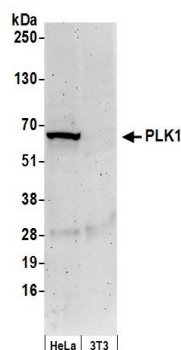
Lot No. A300-251A-1



APPLICATIONS	WB, IP, ICC-IF						
SPECIES REACTIVITY	Human						
AMOUNT	100 µl						
CONCENTRATION	1000 µg/ml						
STORAGE/SHELF LIFE	2 – 8° C / 1 year from date of receipt						
PHYSICAL STATE	Liquid						
BUFFER	Tris-citrate/phosphate buffer, pH 7 to 8 containing 0.09% Sodium Azide						
ISOTYPE	IgG						
ORIGIN	USA						
PRODUCTION PROCEDURES	<p>Antibodies were affinity purified using epitopes specific to PLK1 immobilized on solid support.</p> <p>The epitopes recognized by A300-251A maps to a region between residues 325 and 375 of human Polo-like kinase using the numbering given in SwissProt entry P53350 (GeneID 5347).</p> <p>Immunoglobulin concentration was determined by extinction coefficient: absorbance at 280 nm of 1.4 equals 1.0 mg of IgG.</p>						
APPLICATIONS	<p>Centrifuge tube to remove product from lid. Optimal working dilutions should be determined experimentally by the investigator. Prepare working dilution immediately before use.</p> <table><tr><td>Western Blot</td><td>1:1,000 – 1:10,000</td></tr><tr><td>Immunoprecipitation</td><td>2 – 4 µg/mg lysate</td></tr><tr><td>Immunofluorescence (ICC)</td><td>1:500 – 1:2,000. Formaldehyde fixation is recommended. Permeabilization with Triton-X 100 is recommended for formaldehyde-fixed cells.</td></tr></table>	Western Blot	1:1,000 – 1:10,000	Immunoprecipitation	2 – 4 µg/mg lysate	Immunofluorescence (ICC)	1:500 – 1:2,000. Formaldehyde fixation is recommended. Permeabilization with Triton-X 100 is recommended for formaldehyde-fixed cells.
Western Blot	1:1,000 – 1:10,000						
Immunoprecipitation	2 – 4 µg/mg lysate						
Immunofluorescence (ICC)	1:500 – 1:2,000. Formaldehyde fixation is recommended. Permeabilization with Triton-X 100 is recommended for formaldehyde-fixed cells.						
APPLICATION NOTES	<p>Western blot of immunoprecipitates performed using Normal Pig Serum (Cat. No. S100-020), Goat anti-Rabbit Light Chain HRP Conjugate (Cat. No. A120-113P) and 4-8% SDS-PAGE (link to IP-western blot protocol in Additional Info section below).</p> <p>Western blot of lysates performed using standard western blot reagents and 4-8% SDS-PAGE.</p>						
IHC HUMAN CONTROLS	HeLa Cells						
ADDITIONAL INFO	<p>https://www.bethyl.com/product/A300-251A</p> <p>Use the link above to view SDS, a current list of citations, and other product specific information.</p> <p>IP-western blot protocol: https://www.bethyl.com/content/protocol_IP_WB</p>						

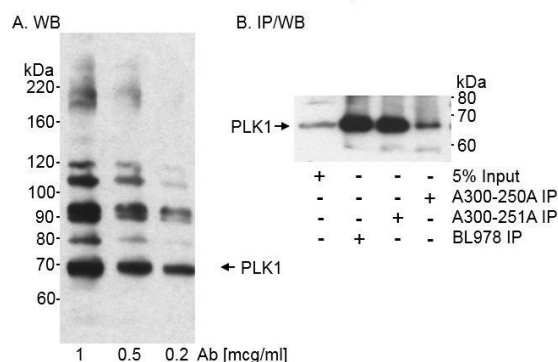
This document certifies that this product has met all of the quality control standards defined by Bethyl Laboratories, Inc.
Eric McIntush, PhD | Chief Scientific Officer

Date: June 21, 2019



Detection of human PLK1 by western blot. *Samples:* Whole cell lysate (50 µg) from HeLa and mouse NIH 3T3 cells prepared using NETN lysis buffer. *Antibody:* Affinity purified rabbit anti-PLK1 antibody A300-251A (lot A300-251A-1) used for WB at 0.1 µg/ml. *Detection:* Chemiluminescence with an exposure time of 3 minutes.

Detection of human PLK1 by immunocytochemistry. *Sample:* Formaldehyde-fixed asynchronous HeLa cells. *Antibody:* Affinity purified rabbit anti-PLK1 (Cat. No. A300-251A Lot1) used at a dilution of 1:1,000 (1 µg/ml). *Detection:* Green fluorescent goat anti-rabbit IgG highly cross-adsorbed Antibody FITC conjugated (Cat. No. A120-501F) used at a dilution of 1:100.



Detection of human PLK1 by western blot and immunoprecipitation. *Samples:* Whole cell lysate (50 µg for A; 600 µg for B) from HeLa cells. *Antibodies:* A. Affinity purified rabbit anti-PLK1 antibody A300-251A used at the indicated concentrations for WB. B. Affinity purified rabbit anti-PLK1 antibodies A300-250A, A300-251A, and BL978 used at 2 µg/600 µg lysate for IP. immunoprecipitates PLK1 was detected using BL978 at 0.5 µg/ml. *Detection:* Chemiluminescence with exposure times of less than 5 minutes.