



# SZABO SCANDIC

Part of Europa Biosite

## Produktinformation



Forschungsprodukte & Biochemikalien



Zellkultur & Verbrauchsmaterial



Diagnostik & molekulare Diagnostik



Laborgeräte & Service

Weitere Information auf den folgenden Seiten!  
See the following pages for more information!



### Lieferung & Zahlungsart

siehe unsere [Liefer- und Versandbedingungen](#)

### Zuschläge

- Mindermengenzuschlag
- Trockeneiszuschlag
- Gefahrgutzuschlag
- Expressversand

### SZABO-SCANDIC HandelsgmbH

Quellenstraße 110, A-1100 Wien

T. +43(0)1 489 3961-0

F. +43(0)1 489 3961-7

[mail@szabo-scandic.com](mailto:mail@szabo-scandic.com)

[www.szabo-scandic.com](http://www.szabo-scandic.com)

[linkedin.com/company/szaboscandic](https://www.linkedin.com/company/szaboscandic) 

# Fen1 Antibody

Rabbit Polyclonal

Antigen Affinity Purified

Protein ID NP\_004102.1

Catalog No. A300-256A-T

GeneID 2237

Lot No. A300-256A-T-2

**APPLICATIONS** WB, IP, IHC

**SPECIES REACTIVITY** Human

**PRESUMED REACTIVITY** Based on 100% sequence identity, this antibody is predicted to react with Sheep and Bovine

**AMOUNT** 10 µl

**CONCENTRATION** 1000 µg/ml

**STORAGE/SHELF LIFE** 2 – 8°C / 1 year from date of receipt

**PHYSICAL STATE** Liquid

**BUFFER** Tris-citrate/phosphate buffer, pH 7 to 8 containing 0.09% Sodium Azide

**ISOTYPE** IgG

**ORIGIN** USA

**PRODUCTION PROCEDURES** Antibody was affinity purified using an epitope specific to Fen1 immobilized on solid support.

The epitope recognized by A300-256A-T maps to a region between residues 250 and 300 of human Flap Structure Endonuclease 1 using the numbering given in entry NP\_004102.1 (GeneID 2237).

**APPLICATIONS** Centrifuge tube to remove product from lid. Optimal working dilutions should be determined experimentally by the investigator. Prepare working dilution immediately before use.

Western Blot 1:2,000 – 1:10,000

Immunoprecipitation 2 – 10 µg/mg lysate

Immunohistochemistry 1:200 – 1:1,000. Epitope retrieval with citrate buffer pH 6.0 is recommended for FFPE tissue sections. 16–18 hour incubation is recommended.

**ADDITIONAL INFO** <https://www.bethyl.com/product/A300-256A-T>

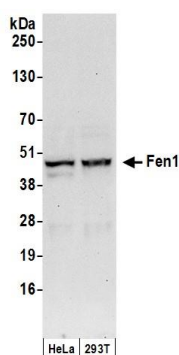
Use the link above to view SDS, a current list of citations, and other product specific information.

IP-western blot protocol: [https://www.bethyl.com/content/protocol\\_IP\\_WB](https://www.bethyl.com/content/protocol_IP_WB)

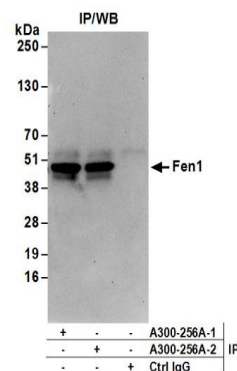
This document certifies that this product has met all of the quality control standards defined by Bethyl Laboratories, Inc.

Michael Spencer, PhD

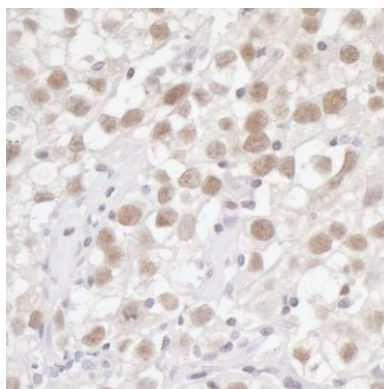
Date: June 6, 2022



**Detection of human Fen1 by western blot.** *Samples:* Whole cell lysate (50 µg) from HeLa and HEK293T cells prepared using NETN lysis buffer. *Antibodies:* Affinity purified rabbit anti-Fen1 antibody A300-256A (lot A300-256A-2) used for WB at 0.1 µg/ml. *Detection:* Chemiluminescence with an exposure time of 30 seconds.



**Detection of human Fen1 by western blot of immunoprecipitates.** *Samples:* Whole cell lysate (0.5 or 1.0 mg per IP reaction; 20% of IP loaded) from HeLa cells prepared using NETN lysis buffer. *Antibodies:* Affinity purified rabbit anti-Fen1 antibody A300-256A (lot A300-256A-2) used for IP at 6 µg per reaction. Fen1 was also immunoprecipitated by a previous lot of this antibody (lot A300-256A-1). For blotting immunoprecipitated Fen1, A300-256A was used at 1 µg/ml. *Detection:* Chemiluminescence with an exposure time of 30 seconds.



**Detection of human Fen1 by immunohistochemistry.**  
*Sample:* FFPE section of human testicular seminoma.  
*Antibody:* Affinity purified rabbit anti-Fen1 (Cat. No. A300-256A Lot2) used at a dilution of 1:1000 (1 µg/ml).  
*Detection:* DAB