



# SZABO SCANDIC

Part of Europa Biosite

## Produktinformation



Forschungsprodukte & Biochemikalien



Zellkultur & Verbrauchsmaterial



Diagnostik & molekulare Diagnostik



Laborgeräte & Service

Weitere Information auf den folgenden Seiten!  
See the following pages for more information!



### Lieferung & Zahlungsart

siehe unsere [Liefer- und Versandbedingungen](#)

### Zuschläge

- Mindermengenzuschlag
- Trockeneiszuschlag
- Gefahrgutzuschlag
- Expressversand

### SZABO-SCANDIC HandelsgmbH

Quellenstraße 110, A-1100 Wien

T. +43(0)1 489 3961-0

F. +43(0)1 489 3961-7

[mail@szabo-scandic.com](mailto:mail@szabo-scandic.com)

[www.szabo-scandic.com](http://www.szabo-scandic.com)

[linkedin.com/company/szaboscandic](https://www.linkedin.com/company/szaboscandic) 

# KAP-1 Antibody

Rabbit Polyclonal

Antigen Affinity Purified

Protein ID NP\_005753.1

Catalog No. A300-274A-T

GeneID 10155

Lot No. A300-274A-T-4

**APPLICATIONS** WB, IP, IHC, ICC

**PRESUMED REACTIVITY** Based on 100% sequence identity, this antibody is predicted to react with Human

**AMOUNT** 10 µl

**CONCENTRATION** 1000 µg/ml

**STORAGE/SHELF LIFE** 2 – 8°C / 1 year from date of receipt

**PHYSICAL STATE** Liquid

**BUFFER** Tris-citrate/phosphate buffer, pH 7 to 8 containing 0.09% Sodium Azide

**ISOTYPE** IgG

**ORIGIN** USA

**PRODUCTION PROCEDURES** Antibody was affinity purified using an epitope specific to KAP-1 immobilized on solid support.

The epitope recognized by A300-274A-T maps to a region between residue 1 and 50 of human Tripartite Motif-Containing 28 using the numbering given in entry NP\_005753.1 (GeneID 10155).

**APPLICATIONS** Centrifuge tube to remove product from lid. Optimal working dilutions should be determined experimentally by the investigator. Prepare working dilution immediately before use.

Western Blot 1:2,000 – 1:10,000

Immunoprecipitation 2 – 10 µg/mg lysate

Immunohistochemistry 1:1,000 – 1:5,000. Epitope retrieval with citrate buffer pH6.0 is recommended for FFPE tissue sections.

Immunocytochemistry 1:500 – 1:2,500. Formaldehyde fixation is recommended. Permeabilization with Triton-X 100 is recommended for formaldehyde-fixed cells.

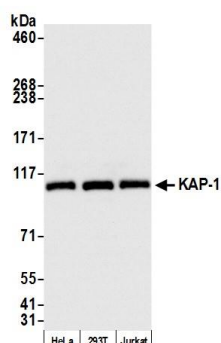
**ADDITIONAL INFO** <https://www.fortislife.com/p/A300-274A-T>

Use the link above to view SDS, a current list of citations, and other product specific information.

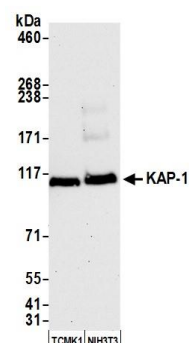
This document certifies that this product has met all of the quality control standards defined by Bethyl Laboratories, Inc.

Michael Spencer, PhD

Date: August 8, 2022



**Detection of human KAP-1 by western blot.** *Samples:* Whole cell lysate (15 µg) from HeLa, HEK293T, and Jurkat cells prepared using NETN lysis buffer. *Antibody:* Affinity purified rabbit anti-KAP-1 antibody A300-274A-T (lot A300-274A-T-4) used for WB at 1:1000. *Detection:* Chemiluminescence with an exposure time of 3 seconds.



**Detection of mouse KAP-1 by western blot.** *Samples:* Whole cell lysate (50 µg) from TCMK-1 and NIH 3T3 cells prepared using NETN lysis buffer. *Antibody:* Affinity purified rabbit anti-KAP-1 antibody A300-274A-T (lot A300-274A-T-4) used for WB at 1:1000. *Detection:* Chemiluminescence with an exposure time of 10 seconds.