



SZABO SCANDIC

Part of Europa Biosite

Produktinformation



Forschungsprodukte & Biochemikalien



Zellkultur & Verbrauchsmaterial



Diagnostik & molekulare Diagnostik



Laborgeräte & Service

Weitere Information auf den folgenden Seiten!
See the following pages for more information!



Lieferung & Zahlungsart

siehe unsere [Liefer- und Versandbedingungen](#)

Zuschläge

- Mindermengenzuschlag
- Trockeneiszuschlag
- Gefahrgutzuschlag
- Expressversand

SZABO-SCANDIC HandelsgmbH

Quellenstraße 110, A-1100 Wien

T. +43(0)1 489 3961-0

F. +43(0)1 489 3961-7

mail@szabo-scandic.com

www.szabo-scandic.com

[linkedin.com/company/szaboscandic](https://www.linkedin.com/company/szaboscandic) 

KAP-1 Antibody

Rabbit Polyclonal

Antigen Affinity Purified

Protein ID NP_005753.1

Catalog No. A300-274A

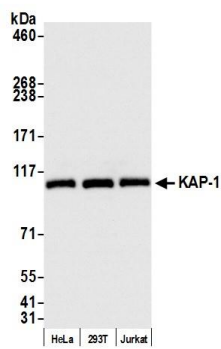
GeneID 10155

Lot No. A300-274A-4

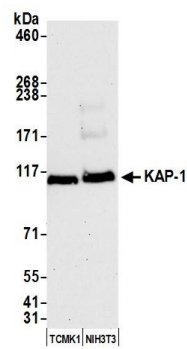


APPLICATIONS	WB, IP, IHC, ICC								
SPECIES REACTIVITY	Human, Mouse								
AMOUNT	100 µl								
CONCENTRATION	1000 µg/ml								
STORAGE/SHELF LIFE	2 – 8° C / 1 year from date of receipt								
PHYSICAL STATE	Liquid								
BUFFER	Tris-citrate/phosphate buffer, pH 7 to 8 containing 0.09% Sodium Azide								
ISOTYPE	IgG								
ORIGIN	USA								
PRODUCTION PROCEDURES	<p>Antibody was affinity purified using an epitope specific to KAP-1 immobilized on solid support.</p> <p>The epitope recognized by A300-274A maps to a region between residue 1 and 50 of human Tripartite Motif-Containing 28 using the numbering given in entry NP_005753.1 (GeneID 10155).</p> <p>Immunoglobulin concentration was determined by extinction coefficient: absorbance at 280 nm of 1.4 equals 1.0 mg of IgG.</p>								
APPLICATIONS	<p>Centrifuge tube to remove product from lid. Optimal working dilutions should be determined experimentally by the investigator. Prepare working dilution immediately before use.</p> <table><tr><td>Western Blot</td><td>1:2,000 – 1:10,000</td></tr><tr><td>Immunoprecipitation</td><td>2 – 10 µg/mg lysate</td></tr><tr><td>Immunohistochemistry</td><td>1:1,000 to 1:5,000. Epitope retrieval with citrate buffer pH6.0 is recommended for FFPE tissue sections.</td></tr><tr><td>Immunocytochemistry</td><td>1:500 – 1:2,500. Formaldehyde fixation is recommended. Permeabilization with Triton-X 100 is recommended for formaldehyde-fixed cells.</td></tr></table>	Western Blot	1:2,000 – 1:10,000	Immunoprecipitation	2 – 10 µg/mg lysate	Immunohistochemistry	1:1,000 to 1:5,000. Epitope retrieval with citrate buffer pH6.0 is recommended for FFPE tissue sections.	Immunocytochemistry	1:500 – 1:2,500. Formaldehyde fixation is recommended. Permeabilization with Triton-X 100 is recommended for formaldehyde-fixed cells.
Western Blot	1:2,000 – 1:10,000								
Immunoprecipitation	2 – 10 µg/mg lysate								
Immunohistochemistry	1:1,000 to 1:5,000. Epitope retrieval with citrate buffer pH6.0 is recommended for FFPE tissue sections.								
Immunocytochemistry	1:500 – 1:2,500. Formaldehyde fixation is recommended. Permeabilization with Triton-X 100 is recommended for formaldehyde-fixed cells.								
APPLICATION NOTES	<p>Western blot of immunoprecipitates performed using Normal Pig Serum (Cat. No. S100-020), Goat anti-Rabbit Light Chain HRP Conjugate (Cat. No. A120-113P) and 4-8% SDS-PAGE (link to IP-western blot protocol in Additional Info section below).</p> <p>Western blot of lysates performed using standard western blot reagents and 4-8% SDS-PAGE.</p>								
IHC HUMAN CONTROLS	Breast Carcinoma, Lung, Ovarian Carcinoma, Prostate Carcinoma, Stomach Adenocarcinoma								
ADDITIONAL INFO	<p>https://www.bethyl.com/product/A300-274A</p> <p>Use the link above to view SDS, a current list of citations, and other product specific information. IP-western blot protocol https://www.bethyl.com/content/protocol_IP_WB</p>								

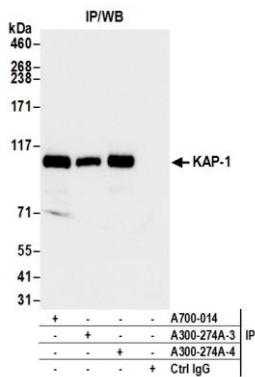
This document certifies that this product has met all of the quality control standards defined by Bethyl Laboratories, Inc.
Eric McIntush, PhD | Chief Scientific Officer Date: December 20, 2019



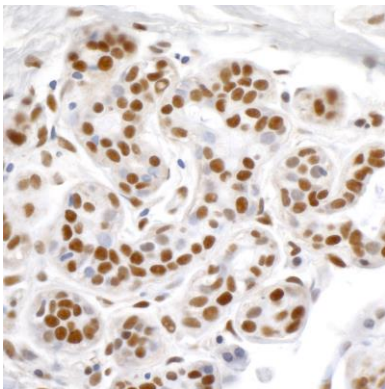
Detection of human KAP-1 by western blot. *Samples:* Whole cell lysate (15 µg) from HeLa, HEK293T, and Jurkat cells prepared using NETN lysis buffer. *Antibody:* Affinity purified rabbit anti-KAP-1 antibody A300-274A (lot A300-274A-4) used for WB at 0.04 µg/ml. *Detection:* Chemiluminescence with an exposure time of 3 seconds.



Detection of mouse KAP-1 by western blot. *Samples:* Whole cell lysate (50 µg) from TCMK-1 and NIH 3T3 cells prepared using NETN lysis buffer. *Antibody:* Affinity purified rabbit anti-KAP-1 antibody A300-274A (lot A300-274A-4) used for WB at 0.04 µg/ml. *Detection:* Chemiluminescence with an exposure time of 10 seconds.



Detection of human KAP-1 by western blot of immunoprecipitates. *Samples:* Whole cell lysate (1.0 mg per IP reaction; 20% of IP loaded) from HeLa cells prepared using NETN lysis buffer. *Antibodies:* Affinity purified rabbit anti-KAP-1 antibody A300-274A (lot A300-274A-4) used for IP at 6 µg per reaction. KAP-1 was also immunoprecipitated by a previous lot of this antibody (lot A300-274A-3) and rabbit anti-KAP-1 recombinant monoclonal antibody A700-014. For blotting immunoprecipitated KAP-1, A700-014 was used at 1:1000. *Detection:* Chemiluminescence with an exposure time of 10 seconds.



Detection of human KAP-1 by immunohistochemistry. *Samples:* FFPE sections of human breast carcinoma. *Antibody:* Affinity purified rabbit anti-KAP-1 (Cat. No. A300-274A lot 4) used at a dilution of 1:1,000 (1 µg/ml). *Detection:* DAB.