



# SZABO SCANDIC

Part of Europa Biosite

## Produktinformation



Forschungsprodukte & Biochemikalien



Zellkultur & Verbrauchsmaterial



Diagnostik & molekulare Diagnostik



Laborgeräte & Service

Weitere Information auf den folgenden Seiten!  
See the following pages for more information!



### Lieferung & Zahlungsart

siehe unsere [Liefer- und Versandbedingungen](#)

### Zuschläge

- Mindermengenzuschlag
- Trockeneiszuschlag
- Gefahrgutzuschlag
- Expressversand

### SZABO-SCANDIC HandelsgmbH

Quellenstraße 110, A-1100 Wien

T. +43(0)1 489 3961-0

F. +43(0)1 489 3961-7

[mail@szabo-scandic.com](mailto:mail@szabo-scandic.com)

[www.szabo-scandic.com](http://www.szabo-scandic.com)

[linkedin.com/company/szaboscandic](https://www.linkedin.com/company/szaboscandic)



# PCNA Antibody

Rabbit Polyclonal

Antigen Affinity Purified Protein ID P12004

Catalog No. A300-276A-T GeneID 5111

Lot No. A300-276A-T-1

<b>APPLICATIONS</b>	WB, IP, IHC, F
<b>SPECIES REACTIVITY</b>	Human, Mouse
<b>PRESUMED REACTIVITY</b>	Based on 100% sequence identity, this antibody is predicted to react with Rat, Chicken and Bovine
<b>AMOUNT</b>	10 µl
<b>CONCENTRATION</b>	1000 µg/ml
<b>STORAGE/SHELF LIFE</b>	2 – 8°C / 1 year from date of receipt
<b>PHYSICAL STATE</b>	Liquid
<b>BUFFER</b>	Tris-citrate/phosphate buffer, pH 7 to 8 containing 0.09% Sodium Azide
<b>ISOTYPE</b>	IgG
<b>ORIGIN</b>	USA
<b>PRODUCTION PROCEDURES</b>	Antibody was affinity purified using an epitope specific to PCNA immobilized on solid support.

The epitope recognized by A300-276A-T maps to a region between residues 75 and 125 of human proliferating cell nuclear antigen using the numbering given in SwissProt entry P12004 (GeneID 5111).

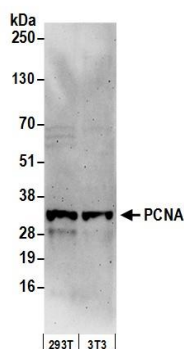
Immunoglobulin concentration was determined by extinction coefficient: absorbance at 280 nm of 1.4 equals 1.0 mg of IgG.

**APPLICATIONS** Centrifuge tube to remove product from lid. Optimal working dilutions should be determined experimentally by the investigator. Prepare working dilution immediately before use.

Western Blot	1:1,000 – 1:10,000
Immunoprecipitation	2 – 5 µg/mg lysate
Immunohistochemistry	1:2,000 – 1:10,000. Epitope retrieval with citrate buffer pH 6.0 is recommended for FFPE tissue sections.
Flow Cytometry	0.03 µg per 1 X 10 <sup>6</sup> cells in a 150 µl volume

**ADDITIONAL INFO** <https://www.bethyl.com/product/A300-276A-T>  
Use the link above to view SDS, a current list of citations, and other product specific information.  
IP-western blot protocol: [https://www.bethyl.com/content/protocol\\_IP\\_WB](https://www.bethyl.com/content/protocol_IP_WB)

This document certifies that this product has met all of the quality control standards defined by Bethyl Laboratories, Inc.  
Michael Spencer, PhD Date: June 6, 2022

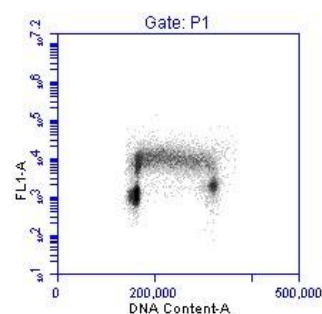


#### Detection of human and mouse PCNA by western blot.

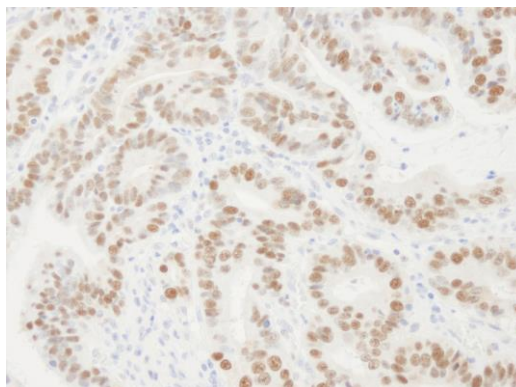
**Samples:** Whole cell lysate (50 µg) from HEK293T and mouse NIH 3T3 cells prepared using NETN lysis buffer.

**Antibody:** Affinity purified rabbit anti-PCNA antibody A300-276A (lot A300-276A-1) used for WB at 0.1 µg/ml.

**Detection:** Chemiluminescence with an exposure time of 3 minutes.



**Detection of PCNA Versus DNA Content.** Asynchronous Jurkat cells were fixed and permeabilized in a sequential treatment of FACS buffer (PBS, 0.5% triton-X-100, 0.5mM EDTA, 1% BSA) and 100% methanol.  $1 \times 10^6$  cells were stained with 0.03 µg anti-PCNA [A300-276A]. Secondary detection was performed with FITC conjugated goat F(ab')<sub>2</sub> anti-rabbit antibody [A120-114F], and DNA stained with

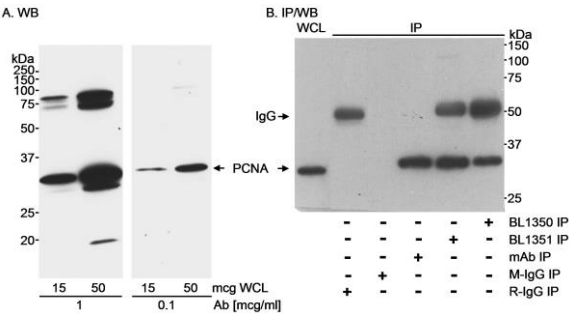


#### Detection of human PCNA by immunohistochemistry.

**Sample:** FFPE section of human stomach carcinoma.

**Antibody:** Affinity purified rabbit anti-PCNA (Cat. No. A300-276A Lot1) used at a dilution of 1:10,000 (0.1 µg/ml).

**Detection:** DAB



**Detection of human PCNA by western blot and immunoprecipitation.** *Samples:* A. Whole cell lysate (WCL) from A-431 cells. B. WCL (500 µg for IP; 30 µg for WCL lane) from MDA-MB-468 cells. *Antibodies:* A. Affinity purified rabbit anti-PCNA antibody BL1350 (Cat. No. A300-276A) used at the indicated concentrations for WB. B. PCNA was immunoprecipitated using BL1350, BL1351 (Cat. No. A300-277A) or a mouse monoclonal antibody to PCNA (mAb). Control mock IP was performed using normal mouse IgG (M-IgG) and normal rabbit IgG (R-IgG). immunoprecipitatesd PCNA was blotted using a mixture of BL1350 and BL1351 (each at 1 µg/ml). *Detection:* Chemiluminescence with an exposure time of 2 minutes (A) or 5 seconds (B).