



SZABO SCANDIC

Part of Europa Biosite

Produktinformation



Forschungsprodukte & Biochemikalien



Zellkultur & Verbrauchsmaterial



Diagnostik & molekulare Diagnostik



Laborgeräte & Service

Weitere Information auf den folgenden Seiten!
See the following pages for more information!



Lieferung & Zahlungsart

siehe unsere [Liefer- und Versandbedingungen](#)

Zuschläge

- Mindermengenzuschlag
- Trockeneiszuschlag
- Gefahrgutzuschlag
- Expressversand

SZABO-SCANDIC HandelsgmbH

Quellenstraße 110, A-1100 Wien

T. +43(0)1 489 3961-0

F. +43(0)1 489 3961-7

mail@szabo-scandic.com

www.szabo-scandic.com

[linkedin.com/company/szaboscandic](https://www.linkedin.com/company/szaboscandic) 

PCNA Antibody

Rabbit Polyclonal

Antigen Affinity Purified

Protein ID P12004

Catalog No. A300-276A

GeneID 5111

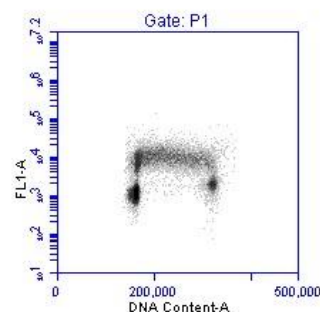
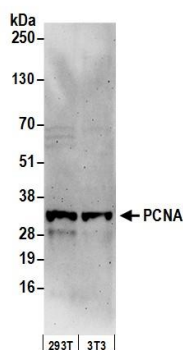
Lot No. A300-276A-1



APPLICATIONS	WB, IP, IHC, F								
SPECIES REACTIVITY	Human, Mouse								
PRESUMED REACTIVITY	Based on 100% sequence identity, this antibody is predicted to react with Rat, Chicken and Bovine								
AMOUNT	100 µl								
CONCENTRATION	1000 µg/ml								
STORAGE/SHELF LIFE	2 – 8° C / 1 year from date of receipt								
PHYSICAL STATE	Liquid								
BUFFER	Tris-citrate/phosphate buffer, pH 7 to 8 containing 0.09% Sodium Azide								
ISOTYPE	IgG								
ORIGIN	USA								
PRODUCTION PROCEDURES	<p>Antibody was affinity purified using an epitope specific to PCNA immobilized on solid support.</p> <p>The epitope recognized by A300-276A maps to a region between residues 75 and 125 of human proliferating cell nuclear antigen using the numbering given in SwissProt entry P12004 (GeneID 5111).</p> <p>Immunoglobulin concentration was determined by extinction coefficient: absorbance at 280 nm of 1.4 equals 1.0 mg of IgG.</p>								
APPLICATIONS	<p>Centrifuge tube to remove product from lid. Optimal working dilutions should be determined experimentally by the investigator. Prepare working dilution immediately before use.</p> <table><tr><td>Western Blot</td><td>1:1,000 – 1:10,000</td></tr><tr><td>Immunoprecipitation</td><td>2 – 5 µg/mg lysate</td></tr><tr><td>Immunohistochemistry</td><td>1:2,000 – 1:10,000. Epitope retrieval with citrate buffer pH 6.0 is recommended for FFPE tissue sections.</td></tr><tr><td>Flow Cytometry</td><td>0.03 µg per 1 X 10⁶ cells in a 150 µl volume</td></tr></table>	Western Blot	1:1,000 – 1:10,000	Immunoprecipitation	2 – 5 µg/mg lysate	Immunohistochemistry	1:2,000 – 1:10,000. Epitope retrieval with citrate buffer pH 6.0 is recommended for FFPE tissue sections.	Flow Cytometry	0.03 µg per 1 X 10 ⁶ cells in a 150 µl volume
Western Blot	1:1,000 – 1:10,000								
Immunoprecipitation	2 – 5 µg/mg lysate								
Immunohistochemistry	1:2,000 – 1:10,000. Epitope retrieval with citrate buffer pH 6.0 is recommended for FFPE tissue sections.								
Flow Cytometry	0.03 µg per 1 X 10 ⁶ cells in a 150 µl volume								
APPLICATION NOTES	<p>Western blot of immunoprecipitates performed using Normal Pig Serum (Cat. No. S100-020), Goat anti-Rabbit Light Chain HRP Conjugate (Cat. No. A120-113P) and 4-20% SDS-PAGE (link to IP-western blot protocol in Additional Info section below).</p> <p>Western blot of lysates performed using standard western blot reagents and 4-20% SDS-PAGE.</p>								
IHC HUMAN CONTROLS	Breast Carcinoma, Colon Carcinoma, Ovarian Carcinoma, Prostate Carcinoma, Stomach Adenocarcinoma, Testicular Seminoma								
IHC MOUSE CONTROLS	Squamous Cell Carcinoma, Teratoma								
ADDITIONAL INFO	<p>https://www.bethyl.com/product/A300-276A</p> <p>Use the link above to view SDS, a current list of citations, and other product specific information.</p> <p>IP-western blot protocol: https://www.bethyl.com/content/protocol_IP_WB</p>								

This document certifies that this product has met all of the quality control standards defined by Bethyl Laboratories, Inc.
Eric McIntush, PhD | Chief Scientific Officer

Date: June 21, 2019

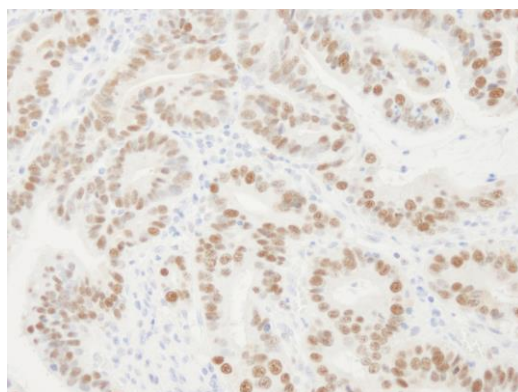
**Detection of human and mouse PCNA by western blot.**

Samples: Whole cell lysate (50 µg) from HEK293T and mouse NIH 3T3 cells prepared using NETN lysis buffer.

Antibody: Affinity purified rabbit anti-PCNA antibody A300-276A (lot A300-276A-1) used for WB at 0.1 µg/ml.

Detection: Chemiluminescence with an exposure time of 3 minutes.

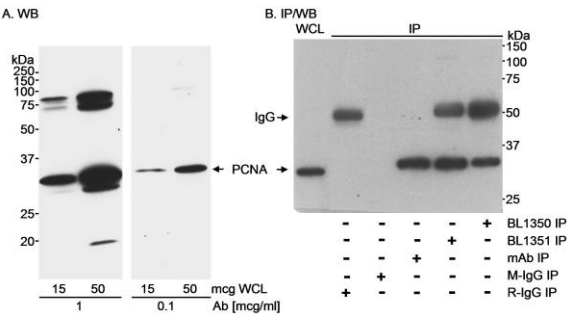
Detection of PCNA Versus DNA Content. Asynchronous Jurkat cells were fixed and permeabilized in a sequential treatment of FACS buffer (PBS, 0.5% triton-X-100, 0.5mM EDTA, 1% BSA) and 100% methanol. 1 X10⁶ cells were stained with 0.03 µg anti-PCNA [A300-276A]. Secondary detection was performed with FITC conjugated goat F(ab')₂ anti-rabbit antibody [A120-114F], and DNA stained with

**Detection of human PCNA by immunohistochemistry.**

Sample: FFPE section of human stomach carcinoma.

Antibody: Affinity purified rabbit anti- PCNA (Cat. No. A300-276A Lot1) used at a dilution of 1:10,000 (0.1 µg/ml).

Detection: DAB



Detection of human PCNA by western blot and immunoprecipitation. *Samples:* A. Whole cell lysate (WCL) from A-431 cells. B. WCL (500 µg for IP; 30 µg for WCL lane) from MDA-MB-468 cells. *Antibodies:* A. Affinity purified rabbit anti-PCNA antibody BL1350 (Cat. No. A300-276A) used at the indicated concentrations for WB. B. PCNA was immunoprecipitated using BL1350, BL1351 (Cat. No. A300-277A) or a mouse monoclonal antibody to PCNA (mAb). Control mock IP was performed using normal mouse IgG (M-IgG) and normal rabbit IgG (R-IgG). immunoprecipitatesd PCNA was blotted using a mixture of BL1350 and BL1351 (each at 1 µg/ml). *Detection:* Chemiluminescence with an exposure time of 2 minutes (A) or 5 seconds (B).