



SZABO SCANDIC

Part of Europa Biosite

Produktinformation



Forschungsprodukte & Biochemikalien



Zellkultur & Verbrauchsmaterial



Diagnostik & molekulare Diagnostik



Laborgeräte & Service

Weitere Information auf den folgenden Seiten!
See the following pages for more information!



Lieferung & Zahlungsart

siehe unsere [Liefer- und Versandbedingungen](#)

Zuschläge

- Mindermengenzuschlag
- Trockeneiszuschlag
- Gefahrgutzuschlag
- Expressversand

SZABO-SCANDIC HandelsgmbH

Quellenstraße 110, A-1100 Wien

T. +43(0)1 489 3961-0

F. +43(0)1 489 3961-7

mail@szabo-scandic.com

www.szabo-scandic.com

[linkedin.com/company/szaboscandic](https://www.linkedin.com/company/szaboscandic) 

PCNA Antibody

Rabbit Polyclonal

Antigen Affinity Purified	RefSeq ID	NP_872590.1
Catalog No. A300-277A-T	Uniprot ID	P12004
Lot No. A300-277A-T-2	GeneID	5111

APPLICATIONS	WB, IP, IHC, IHC-IF
SPECIES REACTIVITY	Human, Mouse
PRESUMED REACTIVITY	Based on 100% sequence identity, this antibody is predicted to react with Rat and Bovine
AMOUNT	10 µl
CONCENTRATION	1000 µg/ml
STORAGE/SHELF LIFE	2 – 8°C / 1 year from date of receipt
PHYSICAL STATE	Liquid
BUFFER	Tris-citrate/phosphate buffer, pH 7 to 8 containing 0.09% Sodium Azide
ISOTYPE	IgG
ORIGIN	USA
PRODUCTION PROCEDURES	Antibody was affinity purified using an epitope specific to PCNA immobilized on solid support.

The epitope recognized by A300-277A-T maps to a region between residue 225 and the C-terminus (residue 261) of human proliferating cell nuclear antigen using the numbering given in SwissProt entry P12004 (GeneID 5111).

Immunoglobulin concentration was determined by extinction coefficient: absorbance at 280 nm of 1.4 equals 1.0 mg of IgG.

APPLICATIONS Centrifuge tube to remove product from lid. Optimal working dilutions should be determined experimentally by the investigator. Prepare working dilution immediately before use.

Western Blot	1:5,000 – 1:20,000
Immunoprecipitation	2 – 10 µg/mg lysate
Immunohistochemistry	1:2,000 to 1:10,000. Epitope retrieval with citrate buffer pH6.0 is recommended for FFPE tissue sections.
Immunofluorescence (IHC)	1:1,000 – 1:5,000

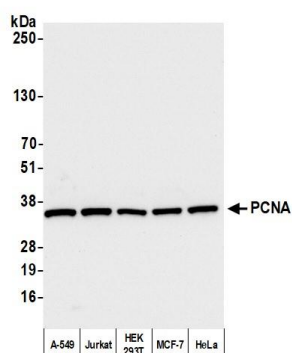
IHC HUMAN CONTROLS Breast Carcinoma, Colon Carcinoma, Non-Small Cell Lung Cancer, Ovarian Carcinoma, Prostate Carcinoma, Stomach Adenocarcinoma, Testicular Seminoma

IHC MOUSE CONTROLS Renal Cell Carcinoma, Teratoma

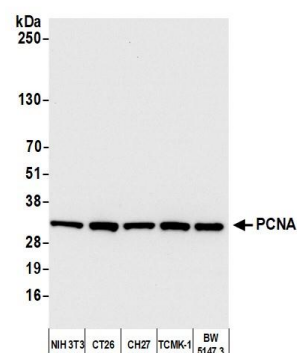
ADDITIONAL INFO <https://www.fortislifesciences.com/p/A300-277A-T>

Use the link above to view SDS, a current list of citations, and other product specific information.

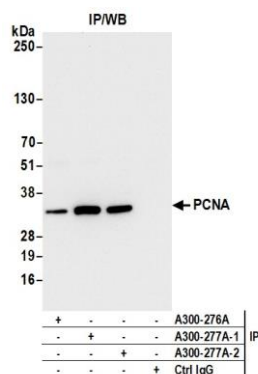
This document certifies that this product has met all of the quality control standards defined by Bethyl Laboratories, Inc.
Michael Spencer, PhD Date: February 27, 2023



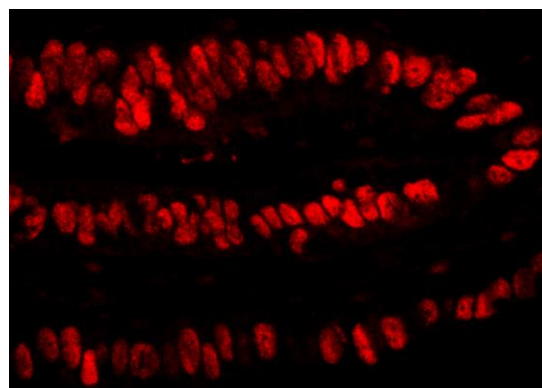
Detection of human PCNA by western blot. *Samples:* Whole cell lysate (10 µg) from A-549, Jurkat, HEK293T, MCF-7, and HeLa cells prepared using NETN lysis buffer. *Antibody:* Affinity purified rabbit anti-PCNA antibody (A300-277A lot 2) used for WB at 0.1 µg/ml. *Detection:* Chemiluminescence with an exposure time of 3 seconds.



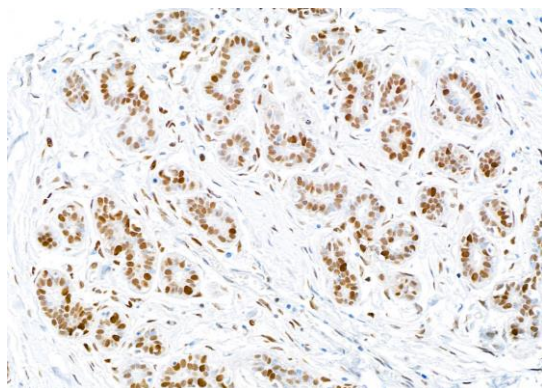
Detection of mouse PCNA by western blot. *Samples:* Whole cell lysate (10 µg) from NIH 3T3, CT26, CH27, TCMK-1, and BW5147.3 cells prepared using NETN lysis buffer. *Antibody:* Affinity purified rabbit anti-PCNA antibody (A300-277A lot 2) used for WB at 0.1 µg/ml. *Detection:* Chemiluminescence with an exposure time of 3 seconds.



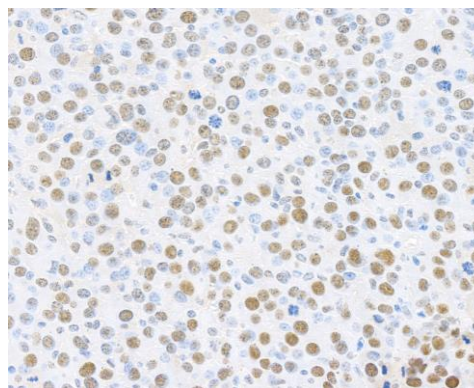
Detection of human PCNA by western blot of immunoprecipitates. *Samples:* Whole cell lysate (1.0 mg per IP reaction; 5% of IP loaded) from HEK293T cells prepared using NETN lysis buffer. *Antibodies:* Affinity purified rabbit anti-PCNA antibody (A300-277A lot 2) used for IP at 6 µg per reaction. PCNA was also immunoprecipitated by a previous lot of this antibody (A300-277A lot 1) and a second antibody against a different epitope of PCNA (A300-276A). For blotting immunoprecipitated PCNA, A300-277A was used at 0.1 µg/ml. *Detection:* Chemiluminescence with an exposure time of 3 seconds.



Detection of human PCNA by immunohistochemistry. *Sample:* FFPE section of human stomach carcinoma. *Antibody:* Affinity purified rabbit anti-PCNA (Cat. No. A300-277A Lot1) used at a dilution of 1:4,000 (0.25 µg/ml). *Detection:* Red-fluorescent goat anti-rabbit IgG-heavy and light chain cross-adsorbed Antibody DyLight® 594 Conjugated used at a dilution of 1:100.



Detection of human PCNA by immunohistochemistry.
Sample: FFPE section of human breast. *Antibody:* Affinity purified rabbit anti-PCNA (Cat. No. A300-277A Lot2) used at a dilution of 1:5000 (0.2 µg/ml). *Detection:* DAB



Detection of mouse PCNA by immunohistochemistry.
Sample: FFPE section of mouse renal cell carcinoma. *Antibody:* Affinity purified rabbit anti-PCNA (Cat. No. A300-277A Lot2) used at a dilution of 1:5000 (0.2 µg/ml). *Detection:* DAB