



# SZABO SCANDIC

Part of Europa Biosite

## Produktinformation



Forschungsprodukte & Biochemikalien



Zellkultur & Verbrauchsmaterial



Diagnostik & molekulare Diagnostik



Laborgeräte & Service

Weitere Information auf den folgenden Seiten!  
See the following pages for more information!



### Lieferung & Zahlungsart

siehe unsere [Liefer- und Versandbedingungen](#)

### Zuschläge

- Mindermengenzuschlag
- Trockeneiszuschlag
- Gefahrgutzuschlag
- Expressversand

### SZABO-SCANDIC Handels GmbH

Quellenstraße 110, A-1100 Wien

T. +43(0)1 489 3961-0

F. +43(0)1 489 3961-7

[mail@szabo-scandic.com](mailto:mail@szabo-scandic.com)

[www.szabo-scandic.com](http://www.szabo-scandic.com)

[linkedin.com/company/szaboscandic](https://www.linkedin.com/company/szaboscandic) 

# PCNA Antibody

Rabbit Polyclonal

Antigen Affinity Purified	RefSeq ID	NP_872590.1
Catalog No. A300-277A	Uniprot ID	P12004
Lot No. A300-277A-2	GeneID	5111

<b>APPLICATIONS</b>	WB, IP, IHC, IHC-IF
<b>SPECIES REACTIVITY</b>	Human, Mouse
<b>PRESUMED REACTIVITY</b>	Based on 100% sequence identity, this antibody is predicted to react with Rat and Bovine
<b>AMOUNT</b>	100 µl
<b>CONCENTRATION</b>	1000 µg/ml
<b>STORAGE/SHELF LIFE</b>	2 – 8°C / 1 year from date of receipt
<b>PHYSICAL STATE</b>	Liquid
<b>BUFFER</b>	Tris-citrate/phosphate buffer, pH 7 to 8 containing 0.09% Sodium Azide
<b>ISOTYPE</b>	IgG
<b>ORIGIN</b>	USA
<b>PRODUCTION PROCEDURES</b>	Antibody was affinity purified using an epitope specific to PCNA immobilized on solid support.

The epitope recognized by A300-277A maps to a region between residue 225 and the C-terminus (residue 261) of human proliferating cell nuclear antigen using the numbering given in SwissProt entry P12004 (GeneID 5111).

Immunoglobulin concentration was determined by extinction coefficient: absorbance at 280 nm of 1.4 equals 1.0 mg of IgG.

**APPLICATIONS** Centrifuge tube to remove product from lid. Optimal working dilutions should be determined experimentally by the investigator. Prepare working dilution immediately before use.

Western Blot	1:5,000 – 1:20,000
Immunoprecipitation	2 – 10 µg/mg lysate
Immunohistochemistry	1:2,000 to 1:10,000. Epitope retrieval with citrate buffer pH6.0 is recommended for FFPE tissue sections.
Immunofluorescence (IHC)	1:1,000 – 1:5,000

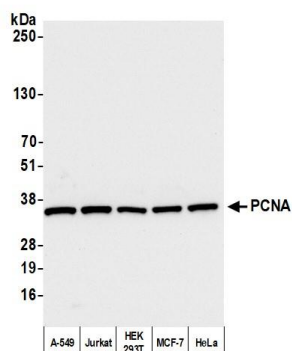
**IHC HUMAN CONTROLS** Breast Carcinoma, Colon Carcinoma, Non-Small Cell Lung Cancer, Ovarian Carcinoma, Prostate Carcinoma, Stomach Adenocarcinoma, Testicular Seminoma

**IHC MOUSE CONTROLS** Renal Cell Carcinoma, Teratoma

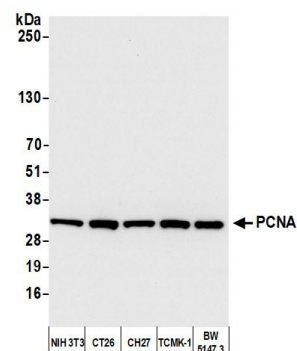
**ADDITIONAL INFO** <https://www.fortislifesciences.com/p/A300-277A>

Use the link above to view SDS, a current list of citations, and other product specific information.

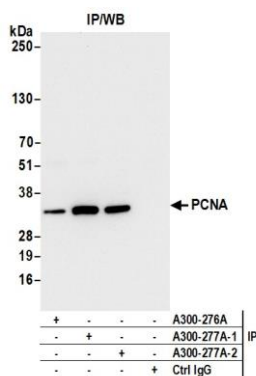
This document certifies that this product has met all of the quality control standards defined by Bethyl Laboratories, Inc.  
Michael Spencer, PhD Date: February 27, 2023



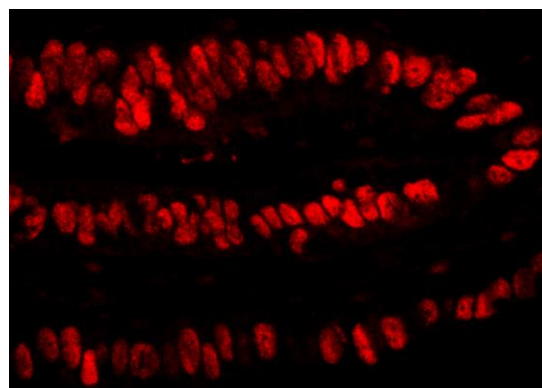
**Detection of human PCNA by western blot.** *Samples:* Whole cell lysate (10 µg) from A-549, Jurkat, HEK293T, MCF-7, and HeLa cells prepared using NETN lysis buffer. *Antibody:* Affinity purified rabbit anti-PCNA antibody (A300-277A lot 2) used for WB at 0.1 µg/ml. *Detection:* Chemiluminescence with an exposure time of 3 seconds.



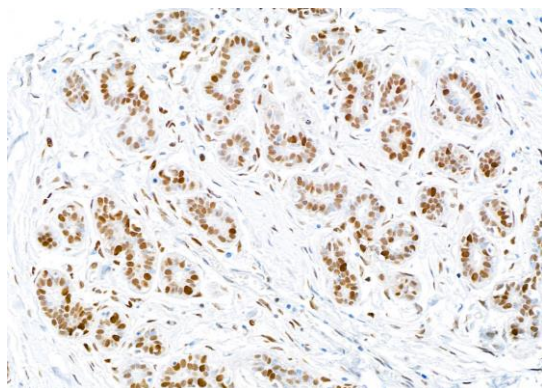
**Detection of mouse PCNA by western blot.** *Samples:* Whole cell lysate (10 µg) from NIH 3T3, CT26, CH27, TCMK-1, and BW5147.3 cells prepared using NETN lysis buffer. *Antibody:* Affinity purified rabbit anti-PCNA antibody (A300-277A lot 2) used for WB at 0.1 µg/ml. *Detection:* Chemiluminescence with an exposure time of 3 seconds.



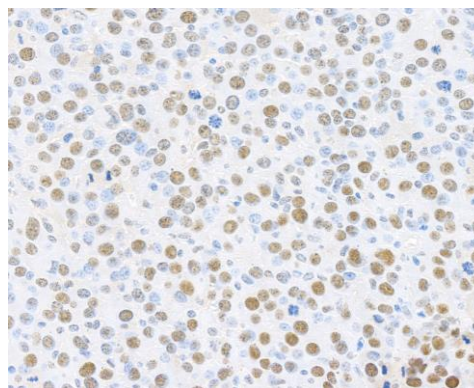
**Detection of human PCNA by western blot of immunoprecipitates.** *Samples:* Whole cell lysate (1.0 mg per IP reaction; 5% of IP loaded) from HEK293T cells prepared using NETN lysis buffer. *Antibodies:* Affinity purified rabbit anti-PCNA antibody (A300-277A lot 2) used for IP at 6 µg per reaction. PCNA was also immunoprecipitated by a previous lot of this antibody (A300-277A lot 1) and a second antibody against a different epitope of PCNA (A300-276A). For blotting immunoprecipitated PCNA, A300-277A was used at 0.1 µg/ml. *Detection:* Chemiluminescence with an exposure time of 3 seconds.



**Detection of human PCNA by immunohistochemistry.** *Sample:* FFPE section of human stomach carcinoma. *Antibody:* Affinity purified rabbit anti-PCNA (Cat. No. A300-277A Lot1) used at a dilution of 1:4,000 (0.25 µg/ml). *Detection:* Red-fluorescent goat anti-rabbit IgG-heavy and light chain cross-adsorbed Antibody DyLight® 594 Conjugated used at a dilution of 1:100.



**Detection of human PCNA by immunohistochemistry.**  
*Sample:* FFPE section of human breast. *Antibody:* Affinity purified rabbit anti-PCNA (Cat. No. A300-277A Lot2) used at a dilution of 1:5000 (0.2 µg/ml). *Detection:* DAB



**Detection of mouse PCNA by immunohistochemistry.**  
*Sample:* FFPE section of mouse renal cell carcinoma. *Antibody:* Affinity purified rabbit anti-PCNA (Cat. No. A300-277A Lot2) used at a dilution of 1:5000 (0.2 µg/ml). *Detection:* DAB