



SZABO SCANDIC

Part of Europa Biosite

Produktinformation



Forschungsprodukte & Biochemikalien



Zellkultur & Verbrauchsmaterial



Diagnostik & molekulare Diagnostik



Laborgeräte & Service

Weitere Information auf den folgenden Seiten!
See the following pages for more information!



Lieferung & Zahlungsart

siehe unsere [Liefer- und Versandbedingungen](#)

Zuschläge

- Mindermengenzuschlag
- Trockeneiszuschlag
- Gefahrgutzuschlag
- Expressversand

SZABO-SCANDIC HandelsgmbH

Quellenstraße 110, A-1100 Wien

T. +43(0)1 489 3961-0

F. +43(0)1 489 3961-7

mail@szabo-scandic.com

www.szabo-scandic.com

[linkedin.com/company/szaboscandic](https://www.linkedin.com/company/szaboscandic) 

hSET1 Antibody

Rabbit Polyclonal

Antigen Affinity Purified

Protein ID O15047

Catalog No. A300-290A-T

GeneID 9739

Lot No. A300-290A-T-2

APPLICATIONS	WB, IP
SPECIES REACTIVITY	Human
AMOUNT	10 µl
CONCENTRATION	1000 µg/ml
STORAGE/SHELF LIFE	2 – 8°C / 1 year from date of receipt
PHYSICAL STATE	Liquid
BUFFER	Tris-citrate/phosphate buffer, pH 7 to 8 containing 0.09% Sodium Azide
ISOTYPE	IgG
ORIGIN	USA
PRODUCTION PROCEDURES	Antibody was affinity purified using an epitope specific to hSET1 immobilized on solid support.

The epitope recognized by A300-290A-T maps to a region between residue 1675 and the C-terminus (residue 1709) of human hSET1 (KIAA0339) using the numbering given in TrEMBL entry O15047 (GeneID 9739).

APPLICATIONS Centrifuge tube to remove product from lid. Optimal working dilutions should be determined experimentally by the investigator. Prepare working dilution immediately before use.

Western Blot 1:2,000 – 1:10,000

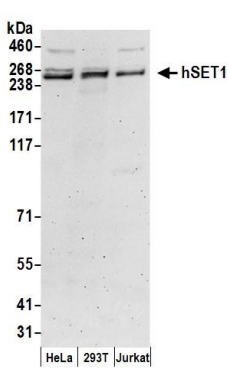
Immunoprecipitation 2 – 10 µg/mg lysate

ADDITIONAL INFO <https://www.bethyl.com/product/A300-290A-T>

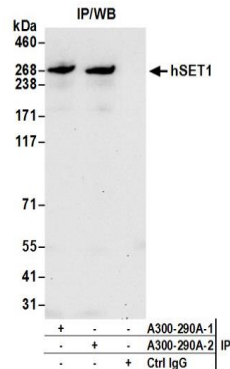
Use the link above to view SDS, a current list of citations, and other product specific information.

IP-western blot protocol: https://www.bethyl.com/content/protocol_IP_WB

This document certifies that this product has met all of the quality control standards defined by Bethyl Laboratories, Inc.
Michael Spencer, PhD Date: June 6, 2022



Detection of human hSET1 by western blot. *Samples:* Nuclear extract (50 µg) from HeLa, HEK293T, and Jurkat cells. *Antibody:* Affinity purified rabbit anti-hSET1 antibody A300-290A (lot A300-290A-2) used for WB at 0.1 µg/ml. *Detection:* Chemiluminescence with an exposure time of 3 minutes.



Detection of human hSET1 by western blot of immunoprecipitates. *Samples:* Nuclear extract (1 mg for IP; 20% of IP loaded) from HEK293T cells. *Antibodies:* Affinity purified rabbit anti-hSET1 antibody A300-290A (lot A300-290A-2) used for IP at 6 µg per reaction. hSET1 was also immunoprecipitated by a previous lot of this antibody A300-290A-1. For blotting immunoprecipitated hSET1, A300-289A was used at 1 µg/ml. *Detection:* Chemiluminescence with an exposure time of 30 seconds.