



SZABO SCANDIC

Part of Europa Biosite

Produktinformation



Forschungsprodukte & Biochemikalien



Zellkultur & Verbrauchsmaterial



Diagnostik & molekulare Diagnostik



Laborgeräte & Service

Weitere Information auf den folgenden Seiten!
See the following pages for more information!



Lieferung & Zahlungsart

siehe unsere [Liefer- und Versandbedingungen](#)

Zuschläge

- Mindermengenzuschlag
- Trockeneiszuschlag
- Gefahrgutzuschlag
- Expressversand

SZABO-SCANDIC HandelsgmbH

Quellenstraße 110, A-1100 Wien

T. +43(0)1 489 3961-0

F. +43(0)1 489 3961-7

mail@szabo-scandic.com

www.szabo-scandic.com

[linkedin.com/company/szaboscandic](https://www.linkedin.com/company/szaboscandic) 

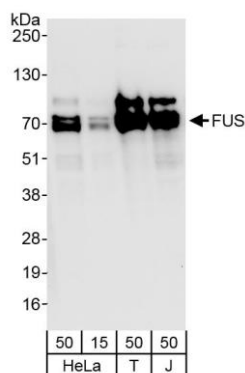
FUS Antibody

Rabbit Polyclonal

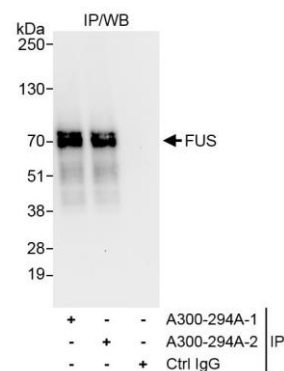
Antigen Affinity Purified	Protein ID	P35637
Catalog No. A300-294A-T	GeneID	2521
Lot No. A300-294A-T-2		

APPLICATIONS	WB, IP, IHC
SPECIES REACTIVITY	Human, Mouse
PRESUMED REACTIVITY	Based on 100% sequence identity, this antibody is predicted to react with Bovine
AMOUNT	10 µl
CONCENTRATION	1000 µg/ml
STORAGE/SHELF LIFE	2 – 8°C / 1 year from date of receipt
PHYSICAL STATE	Liquid
BUFFER	Tris-citrate/phosphate buffer, pH 7 to 8 containing 0.09% Sodium Azide
ISOTYPE	IgG
ORIGIN	USA
PRODUCTION PROCEDURES	Antibody was affinity purified using an epitope specific to FUS immobilized on solid support. The epitope recognized by A300-294A-T maps to a region between residue 500 and the C-terminus (residue 526) of human fusion (involved in t(12;16) in malignant liposarcoma) using the numbering given in SwissProt entry P35637 (GeneID 2521).
APPLICATIONS	Centrifuge tube to remove product from lid. Optimal working dilutions should be determined experimentally by the investigator. Prepare working dilution immediately before use. Western Blot 1:10,000 – 1:50,000 Immunoprecipitation 2 – 10 µg/mg lysate Immunohistochemistry 1:1,000 – 1:10,000. Epitope retrieval with citrate buffer pH 6.0 is recommended for FFPE tissue sections.
ADDITIONAL INFO	https://www.bethyl.com/product/A300-294A-T Use the link above to view SDS, a current list of citations, and other product specific information. IP-western blot protocol: https://www.bethyl.com/content/protocol_IP_WB

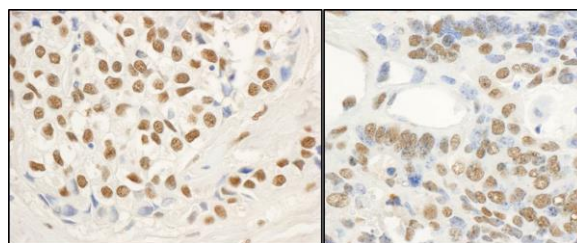
This document certifies that this product has met all of the quality control standards defined by Bethyl Laboratories, Inc.
Michael Spencer, PhD Date: June 6, 2022



Detection of human FUS by western blot. *Samples:* Whole cell lysate from HeLa (15 and 50 µg); HEK293T (T; 50 µg) and Jurkat (J; 50 µg) cells prepared using NETN lysis buffer. *Antibodies:* Affinity purified rabbit anti-FUS antibody A300-294A (lot A300-294A-2) used for WB at 0.1 µg/ml. *Detection:* Chemiluminescence with exposure time of 3 seconds.



Detection of human FUS by western blot of immunoprecipitates. *Samples:* Whole cell lysate (1.0 mg for IP, 20% of IP loaded) from HeLa cells prepared using NETN lysis buffer. *Antibodies:* Affinity purified rabbit anti-FUS antibody A300-294A (lot A300-294A-2) used for IP at 6 µg/mg lysate. FUS was also immunoprecipitated by a previous lot of this antibody (lot A300-294A-1). For blotting immunoprecipitated FUS, A300-294A was used at 0.1 µg/ml. *Detection:* Chemiluminescence with exposure time of 10 seconds.



Detection of human and mouse FUS by immunohistochemistry. *Sample:* FFPE section of human breast carcinoma (left) and mouse teratoma (right). *Antibody:* Affinity purified rabbit anti-FUS (Cat. No. A300-294A Lot2) used at a dilution of 1:5,000 (0.2 µg/ml) and 1:1,000 (1 µg/ml). *Detection:* DAB