



# SZABO SCANDIC

Part of Europa Biosite

## Produktinformation



Forschungsprodukte & Biochemikalien



Zellkultur & Verbrauchsmaterial



Diagnostik & molekulare Diagnostik



Laborgeräte & Service

Weitere Information auf den folgenden Seiten!  
See the following pages for more information!



### Lieferung & Zahlungsart

siehe unsere [Liefer- und Versandbedingungen](#)

### Zuschläge

- Mindermengenzuschlag
- Trockeneiszuschlag
- Gefahrgutzuschlag
- Expressversand

### SZABO-SCANDIC Handels GmbH

Quellenstraße 110, A-1100 Wien

T. +43(0)1 489 3961-0

F. +43(0)1 489 3961-7

[mail@szabo-scandic.com](mailto:mail@szabo-scandic.com)

[www.szabo-scandic.com](http://www.szabo-scandic.com)

[linkedin.com/company/szaboscandic](https://www.linkedin.com/company/szaboscandic) 

# MAD2 Antibody

Rabbit Polyclonal

Antigen Affinity Purified

Protein ID Q13257

Catalog No. A300-301A-T

GeneID 4085

Lot No. A300-301A-T-3

**APPLICATIONS** WB, IP

**SPECIES REACTIVITY** Human, Mouse

**AMOUNT** 10 µl

**CONCENTRATION** 1000 µg/ml

**STORAGE/SHELF LIFE** 2 – 8°C / 1 year from date of receipt

**PHYSICAL STATE** Liquid

**BUFFER** Tris-citrate/phosphate buffer, pH 7 to 8 containing 0.09% Sodium Azide

**ISOTYPE** IgG

**ORIGIN** USA

**PRODUCTION PROCEDURES** Antibody was affinity purified using an epitope specific to MAD2 immobilized on solid support.

The epitope recognized by A300-301A-T maps to a region between residue 150 and the C-terminus (residue 205) of human Mitotic Arrest Deficient 2 using the numbering given in SwissProt entry Q13257 (GeneID 4085).

**APPLICATIONS** Centrifuge tube to remove product from lid. Optimal working dilutions should be determined experimentally by the investigator. Prepare working dilution immediately before use.

Western Blot 1:2,000 – 1:10,000

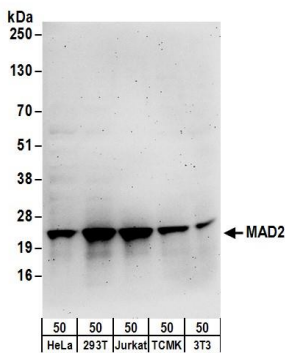
Immunoprecipitation 2 – 10 µg/mg lysate

**ADDITIONAL INFO** <https://www.bethyl.com/product/A300-301A-T>

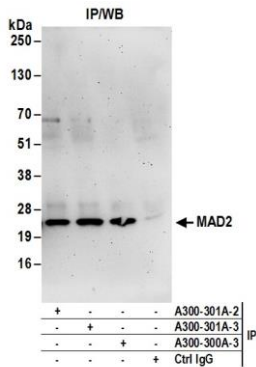
Use the link above to view SDS, a current list of citations, and other product specific information.

IP-western blot protocol: [https://www.bethyl.com/content/protocol\\_IP\\_WB](https://www.bethyl.com/content/protocol_IP_WB)

This document certifies that this product has met all of the quality control standards defined by Bethyl Laboratories, Inc.  
Michael Spencer, PhD Date: June 6, 2022



**Detection of human and mouse MAD2 by western blot.**  
*Samples:* Whole cell lysate (50 µg) from HeLa, HEK293T, Jurkat, mouse TCMK-1, and mouse NIH 3T3 cells.  
*Antibodies:* Affinity purified rabbit anti-MAD2 antibody A300-301A (lot A300-301A-3) used for WB at 0.1 µg/ml.  
*Detection:* Chemiluminescence with an exposure time of 3 minutes.



**Detection of human MAD2 by western blot of immunoprecipitates.** *Samples:* Whole cell lysate (1 mg for IP; 20% of IP loaded) from HeLa cells. *Antibodies:* Affinity purified rabbit anti-MAD2 antibody A300-301A (lot A300-301A-3) used for IP at 6 µg/mg lysate. MAD2 was also immunoprecipitated by a previous lot of this antibody (lot A300-301A-2) and rabbit anti-MAD2 antibody A300-300A. For blotting immunoprecipitated MAD2, A300-301A was used at 1 µg/ml. *Detection:* Chemiluminescence with an exposure time of 3 minutes.