



# SZABO SCANDIC

Part of Europa Biosite

## Produktinformation



Forschungsprodukte & Biochemikalien



Zellkultur & Verbrauchsmaterial



Diagnostik & molekulare Diagnostik



Laborgeräte & Service

Weitere Information auf den folgenden Seiten!  
See the following pages for more information!



### Lieferung & Zahlungsart

siehe unsere [Liefer- und Versandbedingungen](#)

### Zuschläge

- Mindermengenzuschlag
- Trockeneiszuschlag
- Gefahrgutzuschlag
- Expressversand

### SZABO-SCANDIC HandelsgmbH

Quellenstraße 110, A-1100 Wien

T. +43(0)1 489 3961-0

F. +43(0)1 489 3961-7

[mail@szabo-scandic.com](mailto:mail@szabo-scandic.com)

[www.szabo-scandic.com](http://www.szabo-scandic.com)

[linkedin.com/company/szaboscandic](https://www.linkedin.com/company/szaboscandic) 

# FUS Antibody

Rabbit Polyclonal

Antigen Affinity Purified

Protein ID P35637

Catalog No. A300-302A-T

GeneID 2521

Lot No. A300-302A-T-4

<b>APPLICATIONS</b>	WB, IP, IHC						
<b>SPECIES REACTIVITY</b>	Human, Mouse						
<b>PRESUMED REACTIVITY</b>	Based on 100% sequence identity, this antibody is predicted to react with Bovine						
<b>AMOUNT</b>	10 µl						
<b>CONCENTRATION</b>	1000 µg/ml						
<b>STORAGE/SHELF LIFE</b>	2 – 8°C / 1 year from date of receipt						
<b>PHYSICAL STATE</b>	Liquid						
<b>BUFFER</b>	Tris-citrate/phosphate buffer, pH 7 to 8 containing 0.09% Sodium Azide						
<b>ISOTYPE</b>	IgG						
<b>ORIGIN</b>	USA						
<b>PRODUCTION PROCEDURES</b>	<p>Antibody was affinity purified using an epitope specific to FUS immobilized on solid support.</p> <p>The epitope recognized by A300-302A-T maps to a region between residues 1 and 50 of human fusion (involved in t(12;16) in malignant liposarcoma) using the numbering given in SwissProt entry P35637 (GeneID 2521).</p>						
<b>APPLICATIONS</b>	<p>Centrifuge tube to remove product from lid. Optimal working dilutions should be determined experimentally by the investigator. Prepare working dilution immediately before use.</p> <table><tr><td>Western Blot</td><td>1:2,000 – 1:10,000</td></tr><tr><td>Immunoprecipitation</td><td>2 – 10 µg/mg lysate</td></tr><tr><td>Immunohistochemistry</td><td>1:500 – 1:2,000. Epitope retrieval with citrate buffer pH 6.0 is recommended for FFPE tissue sections.</td></tr></table>	Western Blot	1:2,000 – 1:10,000	Immunoprecipitation	2 – 10 µg/mg lysate	Immunohistochemistry	1:500 – 1:2,000. Epitope retrieval with citrate buffer pH 6.0 is recommended for FFPE tissue sections.
Western Blot	1:2,000 – 1:10,000						
Immunoprecipitation	2 – 10 µg/mg lysate						
Immunohistochemistry	1:500 – 1:2,000. Epitope retrieval with citrate buffer pH 6.0 is recommended for FFPE tissue sections.						
<b>ADDITIONAL INFO</b>	<p><a href="https://www.bethyl.com/product/A300-302A-T">https://www.bethyl.com/product/A300-302A-T</a></p> <p>Use the link above to view SDS, a current list of citations, and other product specific information.</p> <p>IP-western blot protocol: <a href="https://www.bethyl.com/content/protocol_IP_WB">https://www.bethyl.com/content/protocol_IP_WB</a></p>						

This document certifies that this product has met all of the quality control standards defined by Bethyl Laboratories, Inc.

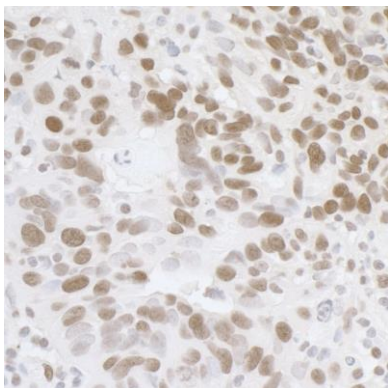
Michael Spencer, PhD

Date: June 6, 2022

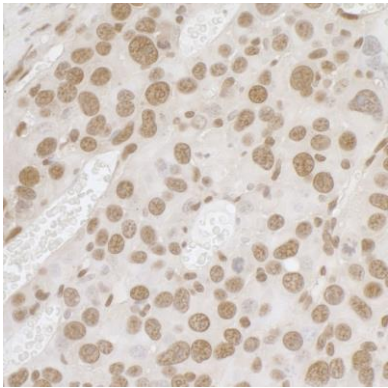


**Detection of human and mouse FUS by western blot.**  
*Samples:* Whole cell lysate (50 µg) from Hep-G2, HeLa, HEK293T, and mouse NIH 3T3 cells prepared using NETN lysis buffer. *Antibody:* Affinity purified rabbit anti-FUS antibody A300-302A (lot A300-302A-4) used for WB at 0.04 µg/ml. *Detection:* Chemiluminescence with an exposure time of 10 seconds.

**Detection of human FUS by western blot of immunoprecipitates.** *Samples:* Whole cell lysate (1.0 mg per IP reaction; 20% of IP loaded) from HEK293T cells prepared using NETN lysis buffer. *Antibodies:* Affinity purified rabbit anti-FUS antibody A300-302A (lot A300-293A-4) used for IP at 3 µg per reaction. FUS was also immunoprecipitated by rabbit anti-FUS recombinant monoclonal antibody [BLR023E] (A700-023) and rabbit anti-FUS antibody A300-293A. For blotting immunoprecipitated FUS, A700-023 was used at 1:1000. *Detection:* Chemiluminescence with an exposure time time of 3 minutes.



**Detection of human FUS by immunohistochemistry.**  
*Sample:* FFPE section of human ovarian carcinoma.  
*Antibody:* Affinity purified rabbit anti-FUS (Cat. No. A300-302A Lot4) used at a dilution of 1:1,000 (1 µg/ml).  
*Detection:* DAB



**Detection of mouse FUS by immunohistochemistry.**  
*Sample:* FFPE section of mouse renal cells carcinoma.  
*Antibody:* Affinity purified rabbit anti-FUS (Cat. No. A300-302A Lot4) used at a dilution of 1:1,000 (1 µg/ml).  
*Detection:* DAB