



SZABO SCANDIC

Part of Europa Biosite

Produktinformation



Forschungsprodukte & Biochemikalien



Zellkultur & Verbrauchsmaterial



Diagnostik & molekulare Diagnostik



Laborgeräte & Service

Weitere Information auf den folgenden Seiten!
See the following pages for more information!



Lieferung & Zahlungsart

siehe unsere [Liefer- und Versandbedingungen](#)

Zuschläge

- Mindermengenzuschlag
- Trockeneiszuschlag
- Gefahrgutzuschlag
- Expressversand

SZABO-SCANDIC Handels GmbH

Quellenstraße 110, A-1100 Wien

T. +43(0)1 489 3961-0

F. +43(0)1 489 3961-7

mail@szabo-scandic.com

www.szabo-scandic.com

[linkedin.com/company/szaboscandic](https://www.linkedin.com/company/szaboscandic) 

KIAA0082 Antibody

Rabbit Polyclonal

Antigen Affinity Purified

Protein ID Q8N1G2

Catalog No. A300-304A

GeneID 23070

Lot No. A300-304A-1



APPLICATIONS	WB, IP, IHC
SPECIES REACTIVITY	Human, Mouse
PRESUMED REACTIVITY	Based on 100% sequence identity, this antibody is predicted to react with Panda and Orangutan
AMOUNT	100 µl
CONCENTRATION	1000 µg/ml
STORAGE/SHELF LIFE	2 – 8° C / 1 year from date of receipt
PHYSICAL STATE	Liquid
BUFFER	Tris-citrate/phosphate buffer, pH 7 to 8 containing 0.09% Sodium Azide
ISOTYPE	IgG
ORIGIN	USA
PRODUCTION PROCEDURES	Antibody was affinity purified using an epitope specific to KIAA0082 immobilized on solid support.

The epitope recognized by A300-304A maps to a region between residues 100 and 150 of human KIAA0082 using the numbering given in TrEMBL entry Q8N1G2 (GeneID 23070).

Immunoglobulin concentration was determined by extinction coefficient: absorbance at 280 nm of 1.4 equals 1.0 mg of IgG.

APPLICATIONS Centrifuge tube to remove product from lid. Optimal working dilutions should be determined experimentally by the investigator. Prepare working dilution immediately before use.

Western Blot 1:5,000 – 1:25,000

Immunoprecipitation 1 – 5 µg/mg lysate

Immunohistochemistry 1:500 – 1:2,000. Epitope retrieval with Tris-EDTA pH 9.0 is recommended for FFPE tissue sections.

APPLICATION NOTES Western blot of immunoprecipitates performed using Normal Pig Serum (Cat. No. S100-020), Goat anti-Rabbit Light Chain HRP Conjugate (Cat. No. A120-113P) and 4-8% SDS-PAGE (link to IP-western blot protocol in Additional Info section below).

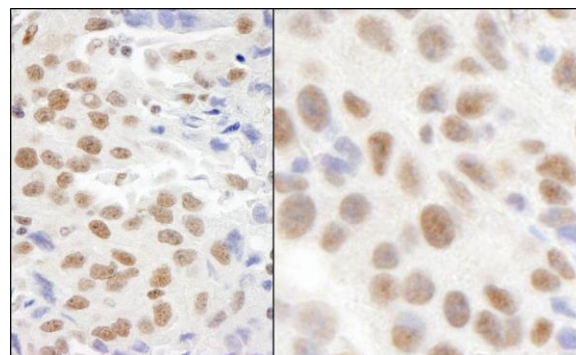
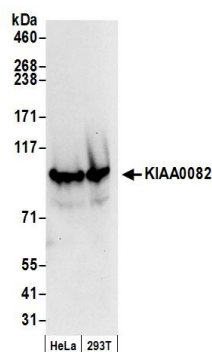
IHC HUMAN CONTROLS Western blot of lysates performed using standard western blot reagents and 4-8% SDS-PAGE. Breast Carcinoma, Colon Carcinoma, Stomach Adenocarcinoma

IHC MOUSE CONTROLS Colon Carcinoma CT26

ADDITIONAL INFO <https://www.bethyl.com/product/A300-304A>

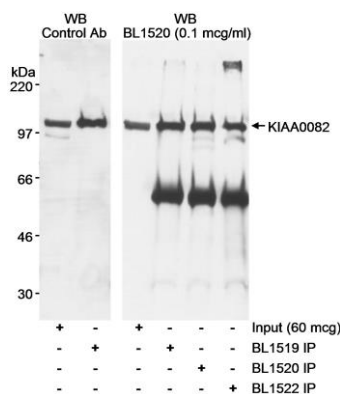
Use the link above to view SDS, a current list of citations, and other product specific information. IP-western blot protocol: https://www.bethyl.com/content/protocol_IP_WB

This document certifies that this product has met all of the quality control standards defined by Bethyl Laboratories, Inc.
Eric McIntush, PhD | Chief Scientific Officer Date: June 21, 2019



Detection of human KIAA0082 by western blot. *Samples:* Whole cell lysate (50 µg) from HeLa and HEK293T cells prepared using NETN lysis buffer. *Antibody:* Affinity purified rabbit anti-KIAA0082 antibody A300-304A (lot A300-304A-1) used for WB at 0.04 µg/ml. *Detection:* Chemiluminescence with an exposure time of 10 seconds.

Detection of human and mouse KIAA0082 by immunohistochemistry. *Sample:* FFPE section of human breast carcinoma (left) and mouse CT26 colon carcinoma (right). *Antibody:* Affinity purified rabbit anti-KIAA0082 (Cat. No. A300-304A Lot1) used at a dilution of 1:1,000 (1 µg/ml). *Detection:* DAB



Detection of human KIAA0082 by western blot and immunoprecipitation. *Samples:* Whole cell lysate (60 µg for Input; 1 mg for IP) from HEK293T cells. *Antibodies:* Affinity purified rabbit anti-KIAA0082 antibody BL1520 (Cat. No. A300-304A) used at 0.1 µg/ml for WB and at 1 µg/mg lysate for IP. KIAA0082 was also immunoprecipitated using rabbit anti-KIAA0082 antibodies BL1519 (Cat. No. A300-303A) and BL1522 (Cat. No. A300-305A) each used at 1 µg/mg lysate. Control antibody is a polyclonal mouse antiserum generated to a recombinant fragment of KIAA0082 used at 1:500 for WB. *Detection:* Chemiluminescence with exposure times of 5 minutes (Control Ab) and 1 minute (BL1520).