



# SZABO SCANDIC

Part of Europa Biosite

## Produktinformation



Forschungsprodukte & Biochemikalien



Zellkultur & Verbrauchsmaterial



Diagnostik & molekulare Diagnostik



Laborgeräte & Service

Weitere Information auf den folgenden Seiten!  
See the following pages for more information!



### Lieferung & Zahlungsart

siehe unsere [Liefer- und Versandbedingungen](#)

### Zuschläge

- Mindermengenzuschlag
- Trockeneiszuschlag
- Gefahrgutzuschlag
- Expressversand

### SZABO-SCANDIC HandelsgmbH

Quellenstraße 110, A-1100 Wien

T. +43(0)1 489 3961-0

F. +43(0)1 489 3961-7

[mail@szabo-scandic.com](mailto:mail@szabo-scandic.com)

[www.szabo-scandic.com](http://www.szabo-scandic.com)

[linkedin.com/company/szaboscandic](https://www.linkedin.com/company/szaboscandic) 

# KIAA0082 Antibody

Rabbit Polyclonal

Antigen Affinity Purified

Protein ID Q8N1G2

Catalog No. A300-305A-T

GeneID 23070

Lot No. A300-305A-T-1

**APPLICATIONS** WB, IP

**SPECIES REACTIVITY** Human

**PRESUMED REACTIVITY** Based on 100% sequence identity, this antibody is predicted to react with Orangutan

**AMOUNT** 10 µl

**CONCENTRATION** 1000 µg/ml

**STORAGE/SHELF LIFE** 2 – 8°C / 1 year from date of receipt

**PHYSICAL STATE** Liquid

**BUFFER** Tris-citrate/phosphate buffer, pH 7 to 8 containing 0.09% Sodium Azide

**ISOTYPE** IgG

**ORIGIN** USA

**PRODUCTION PROCEDURES** Antibody was affinity purified using an epitope specific to KIAA0082 immobilized on solid support.

The epitope recognized by A300-305A-T maps to a region between residue 800 and the C-terminus (residue 835) of human KIAA0082 using the numbering given in TrEMBL entry Q8N1G2 (GeneID 23070).

Immunoglobulin concentration was determined by extinction coefficient: absorbance at 280 nm of 1.4 equals 1.0 mg of IgG.

**APPLICATIONS** Centrifuge tube to remove product from lid. Optimal working dilutions should be determined experimentally by the investigator. Prepare working dilution immediately before use.

Western Blot 1:5,000 – 1:25,000

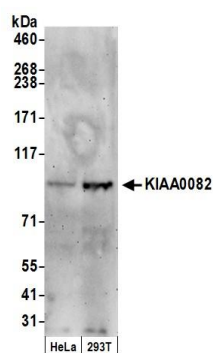
Immunoprecipitation 1 – 5 µg/mg lysate

**ADDITIONAL INFO** <https://www.bethyl.com/product/A300-305A-T>

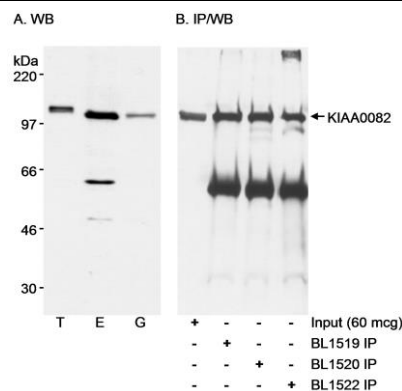
Use the link above to view SDS, a current list of citations, and other product specific information.

IP-western blot protocol: [https://www.bethyl.com/content/protocol\\_IP\\_WB](https://www.bethyl.com/content/protocol_IP_WB)

This document certifies that this product has met all of the quality control standards defined by Bethyl Laboratories, Inc.  
Michael Spencer, PhD Date: June 6, 2022



**Detection of human KIAA0082 by western blot.** *Samples:* Whole cell lysate (50 µg) from HeLa and HEK293T cells prepared using NETN lysis buffer. *Antibody:* Affinity purified rabbit anti-KIAA0082 antibody A300-305A (lot A300-305A-1) used for WB at 0.2 µg/ml. *Detection:* Chemiluminescence with an exposure time of 3 minutes.



**Detection of human KIAA0082 by western blot and immunoprecipitation.** *Samples:* A. Whole cell lysate (T, 15 µg; E, 60µg; G, 15µg) from HEK293T cells transfected with a myc-KIAA0082 expression construct (T), HEK293T cells that were mock transfected (E) and G361 cells (G). B. Whole cell lysate (60 µg for Input; 1 mg for IP) from 293T cells. *Antibodies:* Affinity purified rabbit anti-KIAA0082 antibody BL1522 (Cat. No. A300-305A) used at 0.1 µg/ml for WB (A) and at 1 µg/mg lysate for IP (B). KIAA0082 was also immunoprecipitated using rabbit anti-KIAA0082 antibodies BL1519 (Cat. No. A300-303A) and BL1520 (Cat. No. A300-304A) each used at 1 µg/mg lysate. immunoprecipitates KIAA0082 was blotted with BL1520 using 0.1 µg/ml. *Detection:* Chemiluminescence with exposure times of 5 minutes (A) and 1 minute (B).