



# SZABO SCANDIC

Part of Europa Biosite

## Produktinformation



Forschungsprodukte & Biochemikalien



Zellkultur & Verbrauchsmaterial



Diagnostik & molekulare Diagnostik



Laborgeräte & Service

Weitere Information auf den folgenden Seiten!  
See the following pages for more information!



### Lieferung & Zahlungsart

siehe unsere [Liefer- und Versandbedingungen](#)

### Zuschläge

- Mindermengenzuschlag
- Trockeneiszuschlag
- Gefahrgutzuschlag
- Expressversand

### SZABO-SCANDIC HandelsgmbH

Quellenstraße 110, A-1100 Wien

T. +43(0)1 489 3961-0

F. +43(0)1 489 3961-7

[mail@szabo-scandic.com](mailto:mail@szabo-scandic.com)

[www.szabo-scandic.com](http://www.szabo-scandic.com)

[linkedin.com/company/szaboscandic](https://www.linkedin.com/company/szaboscandic) 

# KIAA0082 Antibody

Rabbit Polyclonal

Antigen Affinity Purified

Protein ID Q8N1G2

Catalog No. A300-305A

GeneID 23070

Lot No. A300-305A-1



<b>APPLICATIONS</b>	WB, IP
<b>SPECIES REACTIVITY</b>	Human
<b>PRESUMED REACTIVITY</b>	Based on 100% sequence identity, this antibody is predicted to react with Orangutan
<b>AMOUNT</b>	100 µl
<b>CONCENTRATION</b>	1000 µg/ml
<b>STORAGE/SHELF LIFE</b>	2 – 8° C / 1 year from date of receipt
<b>PHYSICAL STATE</b>	Liquid
<b>BUFFER</b>	Tris-citrate/phosphate buffer, pH 7 to 8 containing 0.09% Sodium Azide
<b>ISOTYPE</b>	IgG
<b>ORIGIN</b>	USA
<b>PRODUCTION PROCEDURES</b>	Antibody was affinity purified using an epitope specific to KIAA0082 immobilized on solid support.

The epitope recognized by A300-305A maps to a region between residue 800 and the C-terminus (residue 835) of human KIAA0082 using the numbering given in TrEMBL entry Q8N1G2 (GeneID 23070).

Immunoglobulin concentration was determined by extinction coefficient: absorbance at 280 nm of 1.4 equals 1.0 mg of IgG.

**APPLICATIONS** Centrifuge tube to remove product from lid. Optimal working dilutions should be determined experimentally by the investigator. Prepare working dilution immediately before use.

Western Blot 1:5,000 – 1:25,000

Immunoprecipitation 1 – 5 µg/mg lysate

**APPLICATION NOTES** Western blot of immunoprecipitates performed using Normal Pig Serum (Cat. No. S100-020), Goat anti-Rabbit Light Chain HRP Conjugate (Cat. No. A120-113P) and 4-8% SDS-PAGE (link to IP-western blot protocol in Additional Info section below).

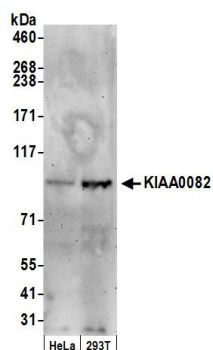
Western blot of lysates performed using standard western blot reagents and 4-8% SDS-PAGE.

**ADDITIONAL INFO** <https://www.bethyl.com/product/A300-305A>

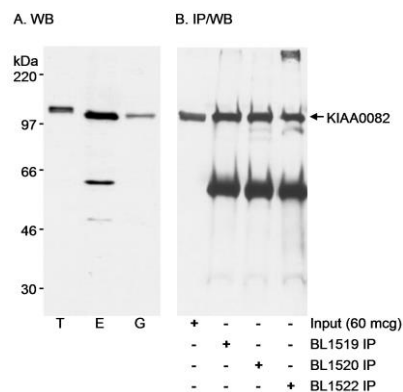
Use the link above to view SDS, a current list of citations, and other product specific information.

IP-western blot protocol: [https://www.bethyl.com/content/protocol\\_IP\\_WB](https://www.bethyl.com/content/protocol_IP_WB)

This document certifies that this product has met all of the quality control standards defined by Bethyl Laboratories, Inc.  
Eric McIntush, PhD | Chief Scientific Officer Date: June 21, 2019



**Detection of human KIAA0082 by western blot.** *Samples:* Whole cell lysate (50 µg) from HeLa and HEK293T cells prepared using NETN lysis buffer. *Antibody:* Affinity purified rabbit anti-KIAA0082 antibody A300-305A (lot A300-305A-1) used for WB at 0.2 µg/ml. *Detection:* Chemiluminescence with an exposure time of 3 minutes.



**Detection of human KIAA0082 by western blot and immunoprecipitation.** *Samples:* A. Whole cell lysate (T, 15 µg; E, 60µg; G, 15µg) from HEK293T cells transfected with a myc-KIAA0082 expression construct (T), HEK293T cells that were mock transfected (E) and G361 cells (G). B. Whole cell lysate (60 µg for Input; 1 mg for IP) from 293T cells. *Antibodies:* Affinity purified rabbit anti-KIAA0082 antibody BL1522 (Cat. No. A300-305A) used at 0.1 µg/ml for WB (A) and at 1 µg/mg lysate for IP (B). KIAA0082 was also immunoprecipitated using rabbit anti-KIAA0082 antibodies BL1519 (Cat. No. A300-303A) and BL1520 (Cat. No. A300-304A) each used at 1 µg/mg lysate. immunoprecipitates KIAA0082 was blotted with BL1520 using 0.1 µg/ml. *Detection:* Chemiluminescence with exposure times of 5 minutes (A) and 1 minute (B).