



SZABO SCANDIC

Part of Europa Biosite

Produktinformation



Forschungsprodukte & Biochemikalien



Zellkultur & Verbrauchsmaterial



Diagnostik & molekulare Diagnostik



Laborgeräte & Service

Weitere Information auf den folgenden Seiten!
See the following pages for more information!



Lieferung & Zahlungsart

siehe unsere [Liefer- und Versandbedingungen](#)

Zuschläge

- Mindermengenzuschlag
- Trockeneiszuschlag
- Gefahrgutzuschlag
- Expressversand

SZABO-SCANDIC HandelsgmbH

Quellenstraße 110, A-1100 Wien

T. +43(0)1 489 3961-0

F. +43(0)1 489 3961-7

mail@szabo-scandic.com

www.szabo-scandic.com

[linkedin.com/company/szaboscandic](https://www.linkedin.com/company/szaboscandic) 

RAP1 Antibody

Rabbit Polyclonal

Antigen Affinity Purified	Protein ID	NP_061848.2
Catalog No. A300-306A-T	GeneID	54386
Lot No. A300-306A-T-9		

APPLICATIONS WB, IP, IHC

SPECIES REACTIVITY Human

AMOUNT 10 µl

CONCENTRATION 1000 µg/ml

STORAGE/SHELF LIFE 2 – 8°C / 1 year from date of receipt

PHYSICAL STATE Liquid

BUFFER Tris-citrate/phosphate buffer, pH 7 to 8 containing 0.09% Sodium Azide

ISOTYPE IgG

ORIGIN USA

PRODUCTION PROCEDURES Antibody was affinity purified using the protein immobilized on solid support. Antibody was generated using recombinant full length human RAP1 (Telomeric repeat binding factor 2 interacting protein 1) according to entry NP_061848.2 (GeneID 54386).

APPLICATIONS Centrifuge tube to remove product from lid. Optimal working dilutions should be determined experimentally by the investigator. Prepare working dilution immediately before use.

Western Blot 1:2,000 – 1:10,000

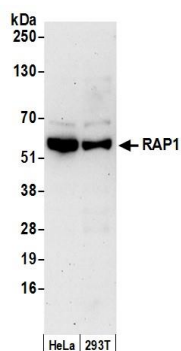
Immunoprecipitation 2 – 10 µg/mg lysate

Immunohistochemistry 1:500 – 1:2,000. Epitope retrieval with Tris-EDTA pH 9.0 is recommended for FFPE tissue sections.

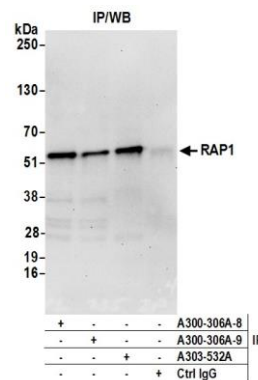
ADDITIONAL INFO <https://www.bethyl.com/product/A300-306A-T>

Use the link above to view SDS, a current list of citations, and other product specific information.
IP-western blot protocol: https://www.bethyl.com/content/protocol_IP_WB

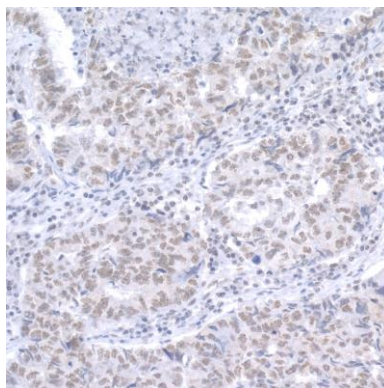
This document certifies that this product has met all of the quality control standards defined by Bethyl Laboratories, Inc.
Michael Spencer, PhD Date: June 6, 2022



Detection of human RAP1 by western blot. *Samples:* Whole cell lysate (15 µg) from HeLa and HEK293T cells prepared using NETN lysis buffer. *Antibody:* Affinity purified rabbit anti-RAP1 antibody A300-306A (lot A300-306A-9) used for WB at 0.1 µg/ml. *Detection:* Chemiluminescence with an exposure time of 3 minutes.



Detection of human RAP1 by western blot of immunoprecipitates. *Samples:* Whole cell lysate (0.5 or 1.0 mg per IP reaction; 20% of IP loaded) from HeLa cells prepared using NETN lysis buffer. *Antibodies:* Affinity purified rabbit anti-RAP1 antibody A300-306A (lot A300-306A-9) used for IP at 6 µg per reaction. RAP1 was also immunoprecipitated by a previous lot of this antibody (lot A300-306A-8) and rabbit anti-RAP1 antibody A303-532A. For blotting immunoprecipitated RAP1, A300-306A was used at 0.4 µg/ml. *Detection:* Chemiluminescence with an exposure time of 30 seconds.



Detection of human RAP1 by immunohistochemistry.

Samples: FFPE sections of human lung carcinoma.

Antibody: Affinity purified rabbit anti-RAP1 (Cat. No. A300-306A Lot9) used at a dilution of 1:5,000 (0.2µg/ml).

Detection: DAB