



SZABO SCANDIC

Part of Europa Biosite

Produktinformation



Forschungsprodukte & Biochemikalien



Zellkultur & Verbrauchsmaterial



Diagnostik & molekulare Diagnostik



Laborgeräte & Service

Weitere Information auf den folgenden Seiten!
See the following pages for more information!



Lieferung & Zahlungsart

siehe unsere [Liefer- und Versandbedingungen](#)

Zuschläge

- Mindermengenzuschlag
- Trockeneiszuschlag
- Gefahrgutzuschlag
- Expressversand

SZABO-SCANDIC Handels GmbH

Quellenstraße 110, A-1100 Wien

T. +43(0)1 489 3961-0

F. +43(0)1 489 3961-7

mail@szabo-scandic.com

www.szabo-scandic.com

[linkedin.com/company/szaboscandic](https://www.linkedin.com/company/szaboscandic)



TSC1 Antibody

Rabbit Polyclonal

Antigen Affinity Purified

Protein ID Q92574

Catalog No. A300-316A-T

GeneID 7248

Lot No. A300-316A-T-1

APPLICATIONS WB, IP

SPECIES REACTIVITY Human, Mouse

AMOUNT 10 µl

CONCENTRATION 1000 µg/ml

STORAGE/SHELF LIFE 2 – 8°C / 1 year from date of receipt

PHYSICAL STATE Liquid

BUFFER Tris-citrate/phosphate buffer, pH 7 to 8 containing 0.09% Sodium Azide

ISOTYPE IgG

ORIGIN USA

PRODUCTION PROCEDURES Antibody was affinity purified using an epitope specific to TSC1 immobilized on solid support.

The epitope recognized by A300-316A-T maps to a region between residue 1100 and the C-terminus (residue 1164) of human tuberous sclerosis 1 using the numbering given in Swiss-Prot entry Q92574 (GeneID 7248).

Immunoglobulin concentration was determined by extinction coefficient: absorbance at 280 nm of 1.4 equals 1.0 mg of IgG.

APPLICATIONS Centrifuge tube to remove product from lid. Optimal working dilutions should be determined experimentally by the investigator. Prepare working dilution immediately before use.

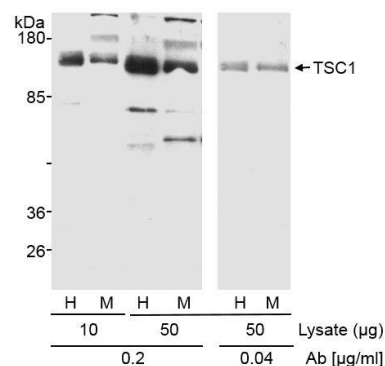
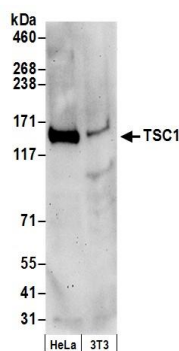
Western Blot 1:5,000 – 1:25,000

Immunoprecipitation 1 – 5 µg/mg lysate

ADDITIONAL INFO <https://www.bethyl.com/product/A300-316A-T>

Use the link above to view SDS, a current list of citations, and other product specific information.
IP-western blot protocol: https://www.bethyl.com/content/protocol_IP_WB

This document certifies that this product has met all of the quality control standards defined by Bethyl Laboratories, Inc.
Michael Spencer, PhD Date: June 6, 2022

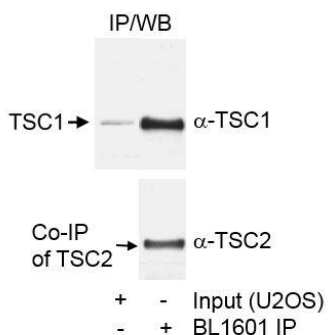


Detection of human and mouse TSC1 by western blot.

Samples: Whole cell lysate (50 µg) from HeLa and mouse NIH 3T3 cells prepared using NETN lysis buffer. **Antibody:** Affinity purified goat anti-TSC1 antibody A300-316A (lot A300-316A-1) used for WB at 0.05 µg/ml. **Detection:** Chemiluminescence with an exposure time of 3 minutes.

Detection of human and mouse TSC1 by western blot.

Samples: Whole cell lysate (10 or 50 µg) from HeLa (H) and MEF (M) cells. **Antibody:** Affinity purified rabbit anti-TSC1 antibody A300-316A (lot A300-316A-1) used for WB at 0.2 or 0.04 µg/ml. **Detection:** Chemiluminescence with an exposure time of 5 minutes.



Detection of human TSC1 by western blot of immunoprecipitates.

Samples: Whole cell lysate (60 µg for input and 1.5 mg for IP) from U2OS cells. **Antibody:** Affinity purified rabbit anti-TSC1 antibody A300-316A (lot A300-316A-1) used for IP at 1 µg/mg lysate. For blotting immunoprecipitated TSC1, A300-316A was used at 0.2 µg/ml. **Detection:** Chemiluminescence with an exposure time of 30 seconds. Note: TSC2 co-immunoprecipitates with TSC1. TSC2 was detected using a TSC2 antibody from another source.