



# SZABO SCANDIC

Part of Europa Biosite

## Produktinformation



Forschungsprodukte & Biochemikalien



Zellkultur & Verbrauchsmaterial



Diagnostik & molekulare Diagnostik



Laborgeräte & Service

Weitere Information auf den folgenden Seiten!  
See the following pages for more information!



### Lieferung & Zahlungsart

siehe unsere [Liefer- und Versandbedingungen](#)

### Zuschläge

- Mindermengenzuschlag
- Trockeneiszuschlag
- Gefahrgutzuschlag
- Expressversand

### SZABO-SCANDIC Handels GmbH

Quellenstraße 110, A-1100 Wien

T. +43(0)1 489 3961-0

F. +43(0)1 489 3961-7

[mail@szabo-scandic.com](mailto:mail@szabo-scandic.com)

[www.szabo-scandic.com](http://www.szabo-scandic.com)

[linkedin.com/company/szaboscandic](https://www.linkedin.com/company/szaboscandic)



# PHD2 Antibody

Rabbit Polyclonal

Antigen Affinity Purified

Catalog No. A300-322A

Lot No. A300-322A-5

Protein ID NP\_071334.1

GeneID 54583



**APPLICATIONS** WB, IP

**SPECIES REACTIVITY** Human

**AMOUNT** 100 µl

**CONCENTRATION** 1000 µg/ml

**STORAGE/SHELF LIFE** 2 – 8° C / 1 year from date of receipt

**PHYSICAL STATE** Liquid

**BUFFER** Tris-citrate/phosphate buffer, pH 7 to 8 containing 0.09% Sodium Azide

**ISOTYPE** IgG

**ORIGIN** USA

**PRODUCTION PROCEDURES** Antibody was affinity purified using an epitope specific to PHD2 immobilized on solid support.

The epitope recognized by A300-322A maps to a region between residues 1 and 50 of human Prolyl Hydroxylase Domain-Containing Protein 2 using the numbering given in entry NP\_071334.1 (GeneID 54583).

Immunoglobulin concentration was determined by extinction coefficient: absorbance at 280 nm of 1.4 equals 1.0 mg of IgG.

**APPLICATIONS** Centrifuge tube to remove product from lid. Optimal working dilutions should be determined experimentally by the investigator. Prepare working dilution immediately before use.

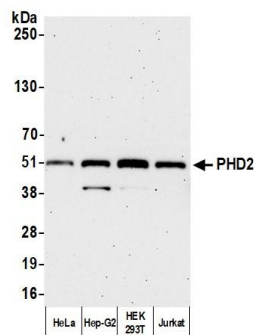
Western Blot 1:500 – 1:2,500

Immunoprecipitation 2 – 10 µg/mg lysate

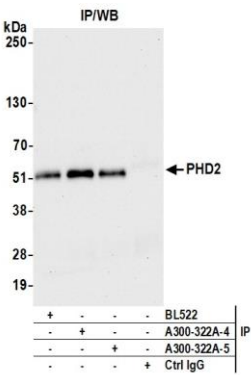
**ADDITIONAL INFO** <https://www.bethyl.com/product/A300-322A>

Use the link above to view SDS, a current list of citations, and other product specific information.

This document certifies that this product has met all of the quality control standards defined by Bethyl Laboratories, Inc.  
Brian McWilliams, PhD Date: June 22, 2021



**Detection of human PHD2 by western blot.** *Samples:* Whole cell lysate (10 µg) from HeLa, Hep-G2, and HEK293T cells prepared using NETN lysis buffer. *Antibody:* Affinity purified rabbit anti-PHD2 antibody A300-322A lot 5 used for WB at 0.04 µg/ml. *Detection:* Chemiluminescence with an exposure time of 75 seconds.



**Detection of human PHD2 by western blot of immunoprecipitates.** *Samples:* Whole cell lysate (1.0 mg per IP reaction; 20% of IP loaded) from HeLa cells prepared using NETN lysis buffer. *Antibodies:* Affinity purified rabbit anti-PHD2 antibody A300-322A lot 5 used for IP at 6 µg per reaction. PHD2 was also immunoprecipitated by a previous lot of this antibody (A300-322A lot 4) and another rabbit anti-PHD2 antibody (BL522). For blotting immunoprecipitated PHD2, A300-322A was used at 0.1 µg/ml. *Detection:* Chemiluminescence with an exposure time of 10 seconds.