



SZABO SCANDIC

Part of Europa Biosite

Produktinformation



Forschungsprodukte & Biochemikalien



Zellkultur & Verbrauchsmaterial



Diagnostik & molekulare Diagnostik



Laborgeräte & Service

Weitere Information auf den folgenden Seiten!
See the following pages for more information!



Lieferung & Zahlungsart

siehe unsere [Liefer- und Versandbedingungen](#)

Zuschläge

- Mindermengenzuschlag
- Trockeneiszuschlag
- Gefahrgutzuschlag
- Expressversand

SZABO-SCANDIC HandelsgmbH

Quellenstraße 110, A-1100 Wien

T. +43(0)1 489 3961-0

F. +43(0)1 489 3961-7

mail@szabo-scandic.com

www.szabo-scandic.com

[linkedin.com/company/szaboscandic](https://www.linkedin.com/company/szaboscandic)



JLP Antibody

Rabbit Polyclonal

Antigen Affinity Purified

Protein ID NP_003962.3

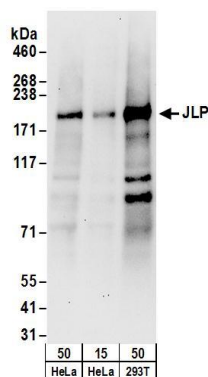
Catalog No. A300-337A-T

GeneID 9043

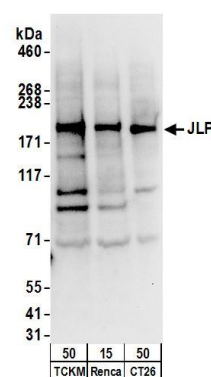
Lot No. A300-337A-T-2

APPLICATIONS	WB, IP, IHC
SPECIES REACTIVITY	Human, Mouse
AMOUNT	10 µl
CONCENTRATION	1000 µg/ml
STORAGE/SHELF LIFE	2 – 8°C / 1 year from date of receipt
PHYSICAL STATE	Liquid
BUFFER	Tris-citrate/phosphate buffer, pH 7 to 8 containing 0.09% Sodium Azide
ISOTYPE	IgG
ORIGIN	USA
PRODUCTION PROCEDURES	Antibody was affinity purified using an epitope specific to JLP immobilized on solid support. The epitope recognized by A300-337A-T maps to a region between residue 775 and 825 of human JNK/SAPK-Associated Protein using the numbering given in entry NP_003962.3 (GeneID 9043).
APPLICATIONS	Centrifuge tube to remove product from lid. Optimal working dilutions should be determined experimentally by the investigator. Prepare working dilution immediately before use. Western Blot 1:1,000 – 1:10,000 Immunoprecipitation 2 – 5 µg/mg lysate Immunohistochemistry 1:500 – 1:2,000. Epitope retrieval with citrate buffer pH 6.0 is recommended for FFPE tissue sections.
ADDITIONAL INFO	https://www.bethyl.com/product/A300-337A-T Use the link above to view SDS, a current list of citations, and other product specific information.

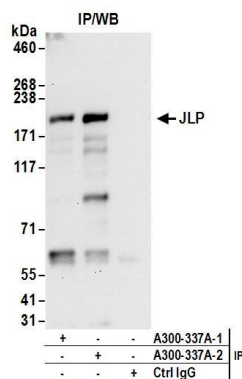
This document certifies that this product has met all of the quality control standards defined by Bethyl Laboratories, Inc.
Michael Spencer, PhD Date: June 6, 2022



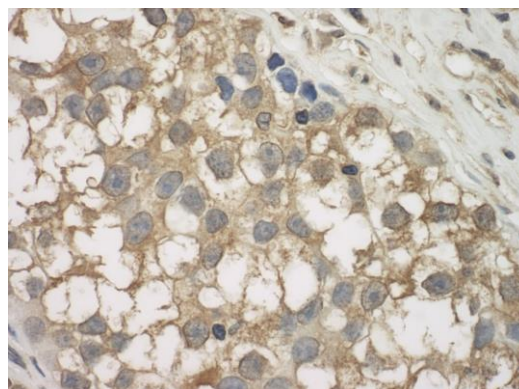
Detection of human JLP by western blot. *Samples:* Whole cell lysate from HeLa (15 and 50 µg) and HEK293T (50µg) cells. *Antibodies:* Affinity purified rabbit anti-JLP antibody A300-337A (lot A300-337A-2) used for WB at 0.1 µg/ml. *Detection:* Chemiluminescence with an exposure time of 30 seconds.



Detection of mouse JLP by western blot. *Samples:* Whole cell lysate from TCKM (50µg), Renca (50µg), and CT26 (50 µg) cells. *Antibodies:* Affinity purified rabbit anti-JLP antibody A300-337A (lot A300-337A-2) used for WB at 0.1 µg/ml. *Detection:* Chemiluminescence with an exposure time of 10 seconds.



Detection of human JLP by western blot of immunoprecipitates. *Samples:* Whole cell lysate (1 mg for IP; 20% of IP loaded) from HeLa cells. *Antibodies:* Affinity purified rabbit anti-JLP antibody A300-337A (lot A300-337A-2) used for IP at 6 µg/mg lysate. JLP was also immunoprecipitated by a previous lot (A300-337A-1) of this antibody. For blotting immunoprecipitated JLP, A300-337A was used at 1 µg/ml. *Detection:* Chemiluminescence with an exposure time of 30 seconds.



Detection of human JLP by immunohistochemistry. *Sample:* FFPE section of human testicular seminoma. *Antibody:* Affinity purified rabbit anti-JLP (Cat. No. A300-337A Lot2) used at a dilution of 1:1,000 (1 µg/ml). *Detection:* DAB