



SZABO SCANDIC

Part of Europa Biosite

Produktinformation



Forschungsprodukte & Biochemikalien



Zellkultur & Verbrauchsmaterial



Diagnostik & molekulare Diagnostik



Laborgeräte & Service

Weitere Information auf den folgenden Seiten!
See the following pages for more information!



Lieferung & Zahlungsart

siehe unsere [Liefer- und Versandbedingungen](#)

Zuschläge

- Mindermengenzuschlag
- Trockeneiszuschlag
- Gefahrgutzuschlag
- Expressversand

SZABO-SCANDIC Handels GmbH

Quellenstraße 110, A-1100 Wien

T. +43(0)1 489 3961-0

F. +43(0)1 489 3961-7

mail@szabo-scandic.com

www.szabo-scandic.com

[linkedin.com/company/szaboscandic](https://www.linkedin.com/company/szaboscandic) 

MAD1 Antibody

Rabbit Polyclonal

Antigen Affinity Purified

Protein ID Q9Y6D9

Catalog No. A300-339A-T

GeneID 8379

Lot No. A300-339A-T-1

APPLICATIONS WB, IP, IHC

SPECIES REACTIVITY Human

AMOUNT 10 µl

CONCENTRATION 1000 µg/ml

STORAGE/SHELF LIFE 2 – 8°C / 1 year from date of receipt

PHYSICAL STATE Liquid

BUFFER Tris-citrate/phosphate buffer, pH 7 to 8 containing 0.09% Sodium Azide

ISOTYPE IgG

ORIGIN USA

PRODUCTION PROCEDURES Antibody was affinity purified using an epitope specific to MAD1 immobilized on solid support.

The epitope recognized by A300-339A-T maps to a region between residues 1 and 50 of human Mitotic arrest deficient-like 1 using the numbering given in Swiss-Prot entry Q9Y6D9 (GeneID 8379).

Immunoglobulin concentration was determined by extinction coefficient: absorbance at 280 nm of 1.4 equals 1.0 mg of IgG.

APPLICATIONS Centrifuge tube to remove product from lid. Optimal working dilutions should be determined experimentally by the investigator. Prepare working dilution immediately before use.

Western Blot 1:5,000 – 1:15,000

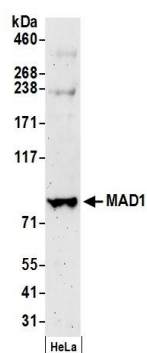
Immunoprecipitation 1 – 4 µg/mg lysate

Immunohistochemistry 1:500 – 1:2,000. Epitope retrieval with citrate buffer pH 6.0 is recommended for FFPE tissue sections.

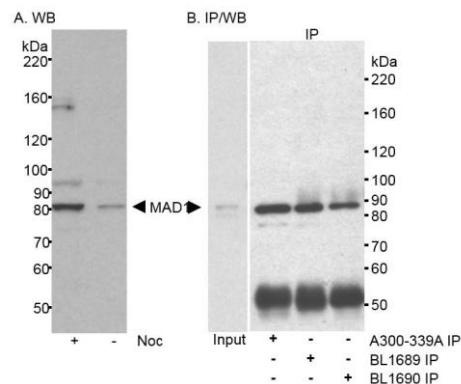
ADDITIONAL INFO <https://www.bethyl.com/product/A300-339A-T>

Use the link above to view SDS, a current list of citations, and other product specific information.
IP-western blot protocol: https://www.bethyl.com/content/protocol_IP_WB

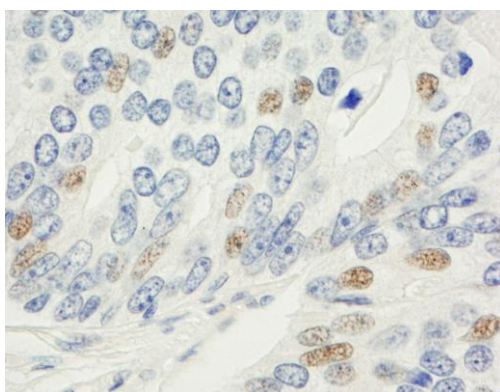
This document certifies that this product has met all of the quality control standards defined by Bethyl Laboratories, Inc.
Michael Spencer, PhD Date: June 6, 2022



Detection of human MAD1 by western blot. *Samples:* Whole cell lysate (50 µg) from HeLa cells prepared using NETN lysis buffer. *Antibody:* Affinity purified rabbit anti-MAD1 antibody A300-339A (lot A300-339A-1) used for WB at 0.06 µg/ml. *Detection:* Chemiluminescence with an exposure time of 3 minutes.



Detection of human MAD1 by western blot and immunoprecipitation. *Samples:* Whole cell lysate (50 µg/lane in A; 50 µg input in B, 1 mg for IP in B) from HeLa cells. In A, HeLa cells were treated with Nocodazole (+) or mock treated (-). *Antibody:* Affinity purified rabbit anti-MAD1 antibody A300-339A used at 0.1 µg/ml for western blot (A) and at 1 µg/mg lysate for IP (B). MAD1 was also immunoprecipitated using rabbit anti-MAD1 antibodies BL1689 and BL1690 using 1 µg/mg lysate. In B, MAD1 in input and immunoprecipitate was detected using BL1689 at 0.2 µg/ml. *Detection:* Chemiluminescence with exposure times of 10 minutes (A) and 5 minutes (B).



Detection of human MAD1 by immunohistochemistry. *Sample:* FFPE section of human prostate carcinoma. *Antibody:* Affinity purified rabbit anti-MAD1 (Cat. No. A300-339A Lot1) used at a dilution of 1:1,000 (1 µg/ml). *Detection:* DAB