



# SZABO SCANDIC

Part of Europa Biosite

## Produktinformation



Forschungsprodukte & Biochemikalien



Zellkultur & Verbrauchsmaterial



Diagnostik & molekulare Diagnostik



Laborgeräte & Service

Weitere Information auf den folgenden Seiten!  
See the following pages for more information!



### Lieferung & Zahlungsart

siehe unsere [Liefer- und Versandbedingungen](#)

### Zuschläge

- Mindermengenzuschlag
- Trockeneiszuschlag
- Gefahrgutzuschlag
- Expressversand

### SZABO-SCANDIC HandelsgmbH

Quellenstraße 110, A-1100 Wien

T. +43(0)1 489 3961-0

F. +43(0)1 489 3961-7

[mail@szabo-scandic.com](mailto:mail@szabo-scandic.com)

[www.szabo-scandic.com](http://www.szabo-scandic.com)

[linkedin.com/company/szaboscandic](https://www.linkedin.com/company/szaboscandic) 

# p14ARF Antibody

Rabbit Polyclonal

Antigen Affinity Purified

Protein ID Q8N726

Catalog No. A300-340A

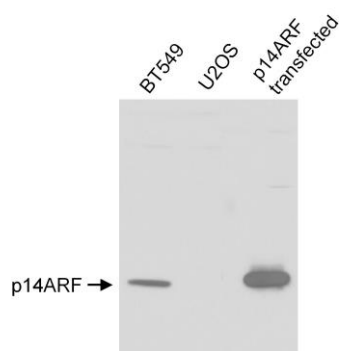
GeneID 1029

Lot No. A300-340A-2

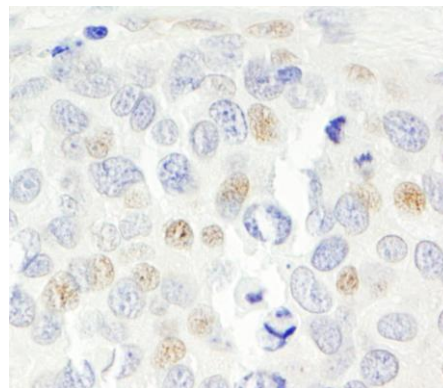


|                              |   |
|------------------------------|---|
| <b>APPLICATIONS</b>          | WB, IHC   |
| <b>SPECIES REACTIVITY</b>    | Human   |
| <b>AMOUNT</b>                | 100 µl  |
| <b>CONCENTRATION</b>         | 1000 µg/ml  |
| <b>STORAGE/SHELF LIFE</b>    | 2 – 8° C / 1 year from date of receipt  |
| <b>PHYSICAL STATE</b>        | Liquid  |
| <b>BUFFER</b>                | Tris-citrate/phosphate buffer, pH 7 to 8 containing 0.09% Sodium Azide  |
| <b>ISOTYPE</b>               | IgG   |
| <b>ORIGIN</b>                | USA   |
| <b>PRODUCTION PROCEDURES</b> | <p>Antibody was affinity purified using an epitope specific to p14ARF immobilized on solid support.</p> <p>The epitope recognized by A300-340A maps to a region between residue 25 and 75 of human p14ARF using the numbering given in entry NP_478102.2 (GeneID 1029).</p> <p>Immunoglobulin concentration was determined by extinction coefficient: absorbance at 280 nm of 1.4 equals 1.0 mg of IgG.</p> |
| <b>APPLICATIONS</b>          | <p>Centrifuge tube to remove product from lid. Optimal working dilutions should be determined experimentally by the investigator. Prepare working dilution immediately before use.</p> <p>Western Blot 1:500 – 1:2,500</p> <p>Immunohistochemistry 1:500 – 1:2,000. Epitope retrieval with citrate buffer pH 6.0 is recommended for FFPE tissue sections.</p>   |
| <b>APPLICATION NOTES</b>     | Western blot of lysates performed using standard western blot reagents and 4–12% SDS-PAGE.  |
| <b>IHC HUMAN CONTROLS</b>    | Breast Carcinoma, Prostate Carcinoma  |
| <b>ADDITIONAL INFO</b>       | <p><a href="https://www.bethyl.com/product/A300-340A">https://www.bethyl.com/product/A300-340A</a></p> <p>Use the link above to view SDS, a current list of citations, and other product specific information.</p>  |

This document certifies that this product has met all of the quality control standards defined by Bethyl Laboratories, Inc.  
Eric McIntush, PhD | Chief Scientific Officer Date: January 10, 2020



**Detection of human p14ARF by western blot.** *Samples:* Whole cell lysate (25 µg) from BT549 (positive control), U2OS (negative control) and p14ARF transfected IMR90 cells. *Antibody:* Affinity purified rabbit anti-p14ARF (Cat. No. A300-340A) used for WB at 1 µg/ml. *Detection:* Chemiluminescence.



**Detection of human p14ARF by immunohistochemistry.** *Sample:* FFPE section of human prostate carcinoma. *Antibody:* Affinity purified rabbit anti-p14ARF (Cat. No. A300-340A Lot2) used at a dilution of 1:1,000 (1 µg/ml). *Detection:* DAB