



SZABO SCANDIC

Part of Europa Biosite

Produktinformation



Forschungsprodukte & Biochemikalien



Zellkultur & Verbrauchsmaterial



Diagnostik & molekulare Diagnostik



Laborgeräte & Service

Weitere Information auf den folgenden Seiten!
See the following pages for more information!



Lieferung & Zahlungsart

siehe unsere [Liefer- und Versandbedingungen](#)

Zuschläge

- Mindermengenzuschlag
- Trockeneiszuschlag
- Gefahrgutzuschlag
- Expressversand

SZABO-SCANDIC HandelsgmbH

Quellenstraße 110, A-1100 Wien

T. +43(0)1 489 3961-0

F. +43(0)1 489 3961-7

mail@szabo-scandic.com

www.szabo-scandic.com

[linkedin.com/company/szaboscandic](https://www.linkedin.com/company/szaboscandic) 

E6AP Antibody

Rabbit Polyclonal

Antigen Affinity Purified

Protein ID NP_000453.2

Catalog No. A300-351A-T

GeneID 7337

Lot No. A300-351A-T-2

APPLICATIONS WB, IP

SPECIES REACTIVITY Human, Mouse

AMOUNT 10 µl

CONCENTRATION 1000 µg/ml

STORAGE/SHELF LIFE 2 – 8°C / 1 year from date of receipt

PHYSICAL STATE Liquid

BUFFER Tris-citrate/phosphate buffer, pH 7 to 8 containing 0.09% Sodium Azide

ISOTYPE IgG

ORIGIN USA

PRODUCTION PROCEDURES Antibody was affinity purified using an epitope specific to E6AP immobilized on solid support.

The epitope recognized by A300-351A-T maps to a region between residue 75 and 125 of human Ubiquitin Protein Ligase E3A using the numbering given in entry NP_000453.2 (GeneID 7337).

APPLICATIONS Centrifuge tube to remove product from lid. Optimal working dilutions should be determined experimentally by the investigator. Prepare working dilution immediately before use.

Western Blot 1:1,000 – 1:5,000

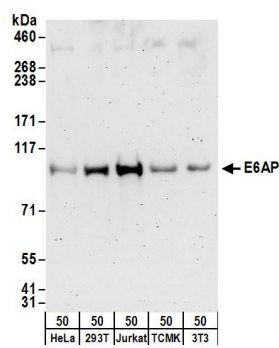
Immunoprecipitation 1 – 4 µg/mg lysate

ADDITIONAL INFO <https://www.bethyl.com/product/A300-351A-T>

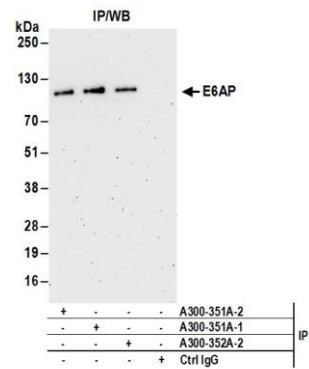
Use the link above to view SDS, a current list of citations, and other product specific information.

IP-western blot protocol: https://www.bethyl.com/content/protocol_IP_WB

This document certifies that this product has met all of the quality control standards defined by Bethyl Laboratories, Inc.
Michael Spencer, PhD Date: June 6, 2022



Detection of human and mouse E6AP by western blot.
Samples: Whole cell lysate (50 µg) from HeLa, HEK293T, Jurkat, mouse TCMK-1, and mouse NIH 3T3 cells.
Antibodies: Affinity purified rabbit anti-E6AP antibody A300-351A (lot A300-351A-2) used for WB at 0.4 µg/ml.
Detection: Chemiluminescence with an exposure time of 3 minutes.



Detection of human E6AP by western blot of immunoprecipitates. *Samples:* Whole cell lysate (1 mg for IP; 20% of IP loaded) from HeLa cells. *Antibodies:* Affinity purified rabbit anti-E6AP antibody A300-351A (lot A300-351A-2) used for IP at 6 µg/mg lysate. E6AP was also immunoprecipitated by a previous lot of this antibody (lot A300-351A-1), and rabbit anti-E6AP antibody A300-352A. For blotting immunoprecipitated E6AP, A300-351A was used at 1 µg/ml. *Detection:* Chemiluminescence with an exposure time of 3 minutes.