



# SZABO SCANDIC

Part of Europa Biosite

## Produktinformation



Forschungsprodukte & Biochemikalien



Zellkultur & Verbrauchsmaterial



Diagnostik & molekulare Diagnostik



Laborgeräte & Service

Weitere Information auf den folgenden Seiten!  
See the following pages for more information!



### Lieferung & Zahlungsart

siehe unsere [Liefer- und Versandbedingungen](#)

### Zuschläge

- Mindermengenzuschlag
- Trockeneiszuschlag
- Gefahrgutzuschlag
- Expressversand

### SZABO-SCANDIC Handels GmbH

Quellenstraße 110, A-1100 Wien

T. +43(0)1 489 3961-0

F. +43(0)1 489 3961-7

[mail@szabo-scandic.com](mailto:mail@szabo-scandic.com)

[www.szabo-scandic.com](http://www.szabo-scandic.com)

[linkedin.com/company/szaboscandic](https://www.linkedin.com/company/szaboscandic) 

# E6AP Antibody

Rabbit Polyclonal

Antigen Affinity Purified

Protein ID NP\_000453.2

Catalog No. A300-352A

GeneID 7337

Lot No. A300-352A-3

**APPLICATIONS** WB, IP

**SPECIES REACTIVITY** Human, Mouse

**AMOUNT** 100 µl

**CONCENTRATION** 1000 µg/ml

**STORAGE/SHELF LIFE** 2 – 8°C / 1 year from date of receipt

**PHYSICAL STATE** Liquid

**BUFFER** Tris-citrate/phosphate buffer, pH 7 to 8 containing 0.09% Sodium Azide

**ISOTYPE** IgG

**ORIGIN** USA

**PRODUCTION PROCEDURES** Antibody was affinity purified using an epitope specific to EAP6 immobilized on solid support.

The epitope recognized by A300-352A maps to a region between residue 400 and 450 of human Ubiquitin Protein Ligase E3A using the numbering given in entry NP\_000453.2 (GeneID 7337).

Immunoglobulin concentration was determined by extinction coefficient: absorbance at 280 nm of 1.4 equals 1.0 mg of IgG.

**APPLICATIONS** Centrifuge tube to remove product from lid. Optimal working dilutions should be determined experimentally by the investigator. Prepare working dilution immediately before use.

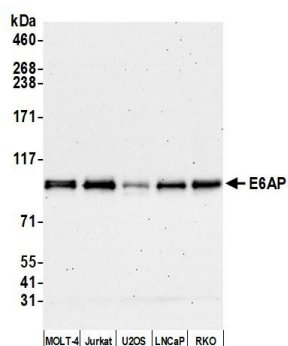
Western Blot 1:1,000 – 1:10,000

Immunoprecipitation 2 – 10 µg/mg lysate

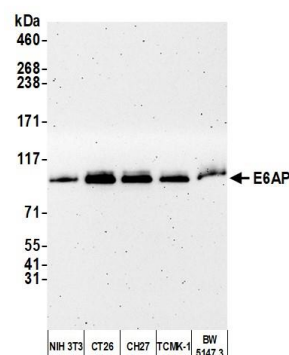
**ADDITIONAL INFO** <https://www.fortislife.com/p/A300-352A>

Use the link above to view SDS, a current list of citations, and other product specific information.

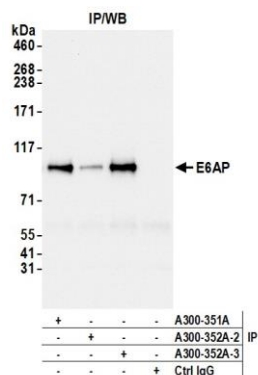
This document certifies that this product has met all of the quality control standards defined by Bethyl Laboratories, Inc.  
Michael Spencer, PhD Date: August 17, 2022



**Detection of human E6AP by western blot.** *Samples:* Whole cell lysate (10 µg) from MOLT-4, Jurkat, U2OS, LNCaP, and RKO cells prepared using NETN lysis buffer. *Antibody:* Affinity purified rabbit anti-E6AP antibody (A300-352A lot 3) used for WB at 0.1 µg/ml. *Detection:* Chemiluminescence with an exposure time of 75 seconds.



**Detection of mouse E6AP by western blot.** *Samples:* Whole cell lysate (10 µg) from NIH 3T3, CT26, CH27, TCMK-1, and BW5147.3 cells prepared using NETN lysis buffer. *Antibody:* Affinity purified rabbit anti-E6AP antibody (A300-352A lot 3) used for WB at 0.1 µg/ml. *Detection:* Chemiluminescence with an exposure time of 3 minutes.



**Detection of human E6AP by western blot of immunoprecipitates.** *Samples:* Whole cell lysate (1.0 mg per IP reaction; 20% of IP loaded) from Jurkat cells prepared using NETN lysis buffer. *Antibodies:* Affinity purified rabbit anti-E6AP antibody (A300-352A lot 3) used for IP at 6 µg per reaction. E6AP was also immunoprecipitated by a previous lot of this antibody (A300-352A lot 2) and a second antibody against a different epitope of E6AP (A300-351A). For blotting immunoprecipitated E6AP, A300-352A was used at 0.1 µg/ml. *Detection:* Chemiluminescence with an exposure time of 3 seconds.