



# SZABO SCANDIC

Part of Europa Biosite

## Produktinformation



Forschungsprodukte & Biochemikalien



Zellkultur & Verbrauchsmaterial



Diagnostik & molekulare Diagnostik



Laborgeräte & Service

Weitere Information auf den folgenden Seiten!  
See the following pages for more information!



### Lieferung & Zahlungsart

siehe unsere [Liefer- und Versandbedingungen](#)

### Zuschläge

- Mindermengenzuschlag
- Trockeneiszuschlag
- Gefahrgutzuschlag
- Expressversand

### SZABO-SCANDIC HandelsgmbH

Quellenstraße 110, A-1100 Wien

T. +43(0)1 489 3961-0

F. +43(0)1 489 3961-7

[mail@szabo-scandic.com](mailto:mail@szabo-scandic.com)

[www.szabo-scandic.com](http://www.szabo-scandic.com)

[linkedin.com/company/szaboscandic](https://www.linkedin.com/company/szaboscandic) 

# p300 Antibody

Rabbit Polyclonal

Antigen Affinity Purified Protein ID NP\_001420.2

Catalog No. A300-358A-T GeneID 2033

Lot No. A300-358A-T-5

<b>APPLICATIONS</b>	WB, IP, IHC, ChIP-Seq
<b>SPECIES REACTIVITY</b>	Human
<b>AMOUNT</b>	10 µl
<b>CONCENTRATION</b>	1000 µg/ml
<b>STORAGE/SHELF LIFE</b>	2 – 8°C / 1 year from date of receipt
<b>PHYSICAL STATE</b>	Liquid
<b>BUFFER</b>	Tris-citrate/phosphate buffer, pH 7 to 8 containing 0.09% Sodium Azide
<b>ISOTYPE</b>	IgG
<b>ORIGIN</b>	USA
<b>PRODUCTION PROCEDURES</b>	Antibody was affinity purified using an epitope specific to p300 immobilized on solid support.

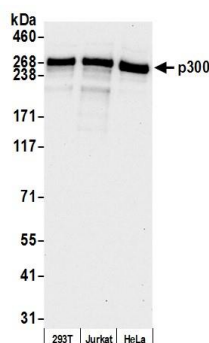
The epitope recognized by A300-358A-T maps to a region between residues 950 and 1000 of human E1A-associated protein p300 using the numbering given in entry NP\_001420.2 (GeneID 2033).

**APPLICATIONS** Centrifuge tube to remove product from lid. Optimal working dilutions should be determined experimentally by the investigator. Prepare working dilution immediately before use.

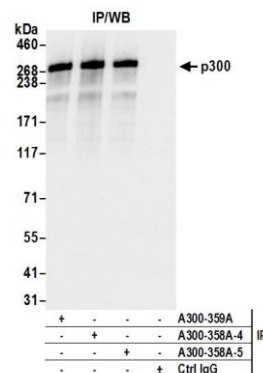
Western Blot	1:10,000 – 1:25,000
Immunoprecipitation	2 – 10 µg/mg lysate
Immunohistochemistry	1:1,000 – 1:5,000. Epitope retrieval with citrate buffer pH6.0 is recommended for FFPE tissue sections.
ChIP-Seq	10 µg as per Ram O et al., Cell. 2011 Dec 23;147(7):1628–39. Previous lots of this antibody have performed in this application.

**ADDITIONAL INFO** <https://www.bethyl.com/product/A300-358A-T>  
Use the link above to view SDS, a current list of citations, and other product specific information.  
IP-western blot protocol: [https://www.bethyl.com/content/protocol\\_IP\\_WB](https://www.bethyl.com/content/protocol_IP_WB)

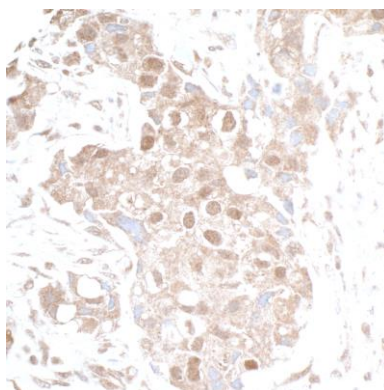
This document certifies that this product has met all of the quality control standards defined by Bethyl Laboratories, Inc.  
Michael Spencer, PhD Date: June 6, 2022



**Detection of human p300 by western blot.** *Samples:* Whole cell lysate (15 µg) from HEK293T, Jurkat, and HeLa cells prepared using NETN lysis buffer. *Antibody:* Affinity purified rabbit anti-p300 antibody A300-358A (lot A300-358A-5) used for WB at 0.04 µg/ml. *Detection:* Chemiluminescence with an exposure time of 10 seconds.



**Detection of human p300 by western blot of immunoprecipitates.** *Samples:* Whole cell lysate (1.0 mg per IP reaction; 20% of IP loaded) from HEK293T cells prepared using NETN lysis buffer. *Antibodies:* Affinity purified rabbit anti-p300 antibody A300-358A (lot A300-358A-5) used for IP at 6 µg per reaction. p300 was also immunoprecipitated by a previous lot of this antibody (lot A300-358A-4) and rabbit anti-p300 antibody A300-359A. For blotting immunoprecipitated p300, A300-358A was used at 0.04 µg/ml. *Detection:* Chemiluminescence with an exposure time of 3 seconds.



**Detection of human p300 by immunohistochemistry.** *Sample:* FFPE section of human lung carcinoma. *Antibody:* Affinity purified rabbit anti-p300 (Cat. No. A300-358A lot 5) used at 1:1,000 (1 µg/ml). *Detection:* DAB.