



# SZABO SCANDIC

Part of Europa Biosite

## Produktinformation



Forschungsprodukte & Biochemikalien



Zellkultur & Verbrauchsmaterial



Diagnostik & molekulare Diagnostik



Laborgeräte & Service

Weitere Information auf den folgenden Seiten!  
See the following pages for more information!



### Lieferung & Zahlungsart

siehe unsere [Liefer- und Versandbedingungen](#)

### Zuschläge

- Mindermengenzuschlag
- Trockeneiszuschlag
- Gefahrgutzuschlag
- Expressversand

### SZABO-SCANDIC HandelsgmbH

Quellenstraße 110, A-1100 Wien

T. +43(0)1 489 3961-0

F. +43(0)1 489 3961-7

[mail@szabo-scandic.com](mailto:mail@szabo-scandic.com)

[www.szabo-scandic.com](http://www.szabo-scandic.com)

[linkedin.com/company/szaboscandic](https://www.linkedin.com/company/szaboscandic) 

# CA150 Antibody

Rabbit Polyclonal

Antigen Affinity Purified

Protein ID NP\_006697.2

Catalog No. A300-360A-T

GeneID 10915

Lot No. A300-360A-T-2

|                              |   |
|------------------------------|---|
| <b>APPLICATIONS</b>          | WB, IHC   |
| <b>SPECIES REACTIVITY</b>    | Human, Mouse  |
| <b>AMOUNT</b>                | 10 µl   |
| <b>CONCENTRATION</b>         | 1000 µg/ml  |
| <b>STORAGE/SHELF LIFE</b>    | 2 – 8°C / 1 year from date of receipt   |
| <b>PHYSICAL STATE</b>        | Liquid  |
| <b>BUFFER</b>                | Tris-citrate/phosphate buffer, pH 7 to 8 containing 0.09% Sodium Azide                          |
| <b>ISOTYPE</b>               | IgG   |
| <b>ORIGIN</b>                | USA   |
| <b>PRODUCTION PROCEDURES</b> | Antibody was affinity purified using an epitope specific to CA150 immobilized on solid support. |

The epitope recognized by A300-360A-T maps to a region between residues 1 and 50 of human Transcription Factor CA150 (Transcription Elongation Regulator 1) using the numbering given in entry NP\_006697.2 (GeneID 10915).

Immunoglobulin concentration was determined by extinction coefficient: absorbance at 280 nm of 1.4 equals 1.0 mg of IgG.

**APPLICATIONS** Centrifuge tube to remove product from lid. Optimal working dilutions should be determined experimentally by the investigator. Prepare working dilution immediately before use.

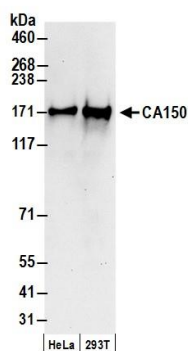
Western Blot 1:1,000 – 1:10,000

Immunohistochemistry 1:1,000 – 1:5,000. Epitope retrieval with citrate buffer pH 6.0 is recommended for FFPE tissue sections.

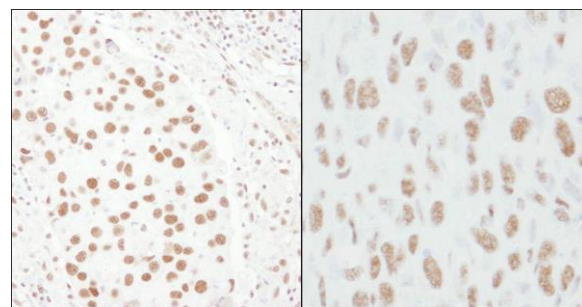
**ADDITIONAL INFO** <https://www.bethyl.com/product/A300-360A-T>

Use the link above to view SDS, a current list of citations, and other product specific information.

This document certifies that this product has met all of the quality control standards defined by Bethyl Laboratories, Inc.  
Michael Spencer, PhD Date: June 6, 2022



**Detection of human CA150 by western blot.** *Samples:* Whole cell lysate (50 µg) from HeLa and HEK293T cells prepared using NETN lysis buffer. *Antibody:* Affinity purified rabbit anti-CA150 antibody A300-360A (lot A300-360A-2) used for WB at 0.1 µg/ml. *Detection:* Chemiluminescence with an exposure time of 10 seconds.



**Detection of human and mouse CA150 by immunohistochemistry.** *Sample:* FFPE section of human breast carcinoma (left) and mouse squamous cell carcinoma (right). *Antibody:* Affinity purified rabbit anti-CA150 (Cat. No. A300-360A) used at a dilution of 1:1,000 (1 µg/ml). *Detection:* DAB