



SZABO SCANDIC

Part of Europa Biosite

Produktinformation



Forschungsprodukte & Biochemikalien



Zellkultur & Verbrauchsmaterial



Diagnostik & molekulare Diagnostik



Laborgeräte & Service

Weitere Information auf den folgenden Seiten!
See the following pages for more information!



Lieferung & Zahlungsart

siehe unsere [Liefer- und Versandbedingungen](#)

Zuschläge

- Mindermengenzuschlag
- Trockeneiszuschlag
- Gefahrgutzuschlag
- Expressversand

SZABO-SCANDIC HandelsgmbH

Quellenstraße 110, A-1100 Wien

T. +43(0)1 489 3961-0

F. +43(0)1 489 3961-7

mail@szabo-scandic.com

www.szabo-scandic.com

[linkedin.com/company/szaboscandic](https://www.linkedin.com/company/szaboscandic) 

BIRC6/Apollon Antibody

Rabbit Polyclonal

Antigen Affinity Purified	Protein ID	Q9NR09
Catalog No. A300-367A-T	GeneID	57448
Lot No. A300-367A-T-2		

APPLICATIONS WB, IP, IHC

SPECIES REACTIVITY Human, Mouse

AMOUNT 10 µl

CONCENTRATION 1000 µg/ml

STORAGE/SHELF LIFE 2 – 8°C / 1 year from date of receipt

PHYSICAL STATE Liquid

BUFFER Tris-citrate/phosphate buffer, pH 7 to 8 containing 0.09% Sodium Azide

ISOTYPE IgG

ORIGIN USA

PRODUCTION PROCEDURES Antibody was affinity purified using an epitope specific to BIRC6/Apollon immobilized on solid support.

The epitope recognized by A300-367A-T maps to a region between residue 4775 and the C-terminus (residue 4829) of human Baculoviral IAP repeat-containing protein 6 using the numbering given in Swiss-Prot entry Q9NR09 (GeneID 57448).

Immunoglobulin concentration was determined by extinction coefficient: absorbance at 280 nm of 1.4 equals 1.0 mg of IgG.

APPLICATIONS Centrifuge tube to remove product from lid. Optimal working dilutions should be determined experimentally by the investigator. Prepare working dilution immediately before use.

Western Blot 1:2,000 – 1:10,000

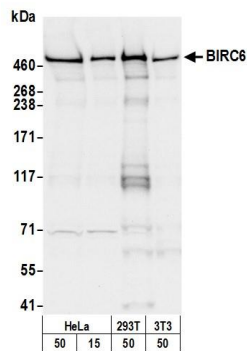
Immunoprecipitation 2 – 10 µg/mg lysate

Immunohistochemistry 1:2,000 – 1:10,000. Epitope retrieval with citrate buffer pH 6.0 is recommended for FFPE tissue sections.

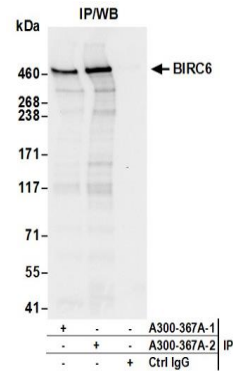
ADDITIONAL INFO <https://www.bethyl.com/product/A300-367A-T>

Use the link above to view SDS, a current list of citations, and other product specific information.
IP-western blot protocol: https://www.bethyl.com/content/protocol_IP_WB

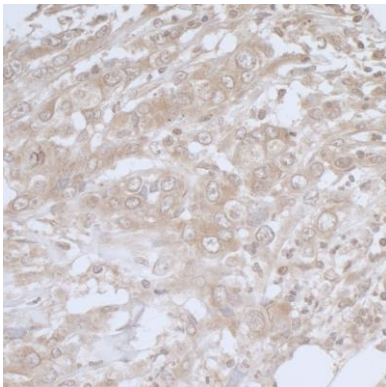
This document certifies that this product has met all of the quality control standards defined by Bethyl Laboratories, Inc.
Michael Spencer, PhD Date: June 6, 2022



Detection of human and mouse BIRC6 by western blot.
Samples: Whole cell lysate from HeLa, HEK293T, and mouse NIH 3T3 cells prepared using NETN lysis buffer.
Antibody: Affinity purified rabbit anti-BIRC6 antibody A300-367A (lot A300-367A-2) used for WB at 0.1 µg/ml.
Detection: Chemiluminescence with an exposure time of 3 seconds.



Detection of human BIRC6 by western blot of immunoprecipitates. *Samples:* Whole cell lysate (0.5 or 1.0 mg per IP reaction; 20% of IP loaded) from HeLa cells prepared using NETN lysis buffer. *Antibodies:* Affinity purified rabbit anti-BIRC6 antibody A300-367A (lot A300-367A-2) used for IP at 6 µg per reaction. BIRC6 was also immunoprecipitated by a previous lot of this antibody (lot A300-367A-1). For blotting immunoprecipitated BIRC6, A300-367A was used at 1 µg/ml. *Detection:* Chemiluminescence with an exposure time of 3 seconds.



Detection of human BIRC6/Apollon by immunohistochemistry. *Sample:* FFPE section of human breast carcinoma. *Antibody:* Affinity purified rabbit anti-BIRC6/Apollon (Cat. No. A300-367A Lot 2) used at a dilution of 1:5,000 (0.2µg/ml). *Detection:* DAB