



SZABO SCANDIC

Part of Europa Biosite

Produktinformation



Forschungsprodukte & Biochemikalien



Zellkultur & Verbrauchsmaterial



Diagnostik & molekulare Diagnostik



Laborgeräte & Service

Weitere Information auf den folgenden Seiten!
See the following pages for more information!



Lieferung & Zahlungsart

siehe unsere [Liefer- und Versandbedingungen](#)

Zuschläge

- Mindermengenzuschlag
- Trockeneiszuschlag
- Gefahrgutzuschlag
- Expressversand

SZABO-SCANDIC HandelsgmbH

Quellenstraße 110, A-1100 Wien

T. +43(0)1 489 3961-0

F. +43(0)1 489 3961-7

mail@szabo-scandic.com

www.szabo-scandic.com

[linkedin.com/company/szaboscandic](https://www.linkedin.com/company/szaboscandic) 

PBEF Antibody

Rabbit Polyclonal

Antigen Affinity Purified	RefSeq ID	NP_005737.1
Catalog No. A300-372A	Uniprot ID	P43490
Lot No. 7	GeneID	10135

APPLICATIONS	WB, IP, IHC
SPECIES REACTIVITY	Human, Mouse
PRESUMED REACTIVITY	Based on 100% sequence identity, this antibody is predicted to react with Rat and Pig
AMOUNT	100 µl
CONCENTRATION	1000 µg/ml
STORAGE/SHELF LIFE	2 – 8°C / 1 year from date of receipt
PHYSICAL STATE	Liquid
BUFFER	Tris-citrate/phosphate buffer, pH 7 to 8 containing 0.09% Sodium Azide
ISOTYPE	IgG
ORIGIN	USA
PRODUCTION PROCEDURES	Antibody was affinity purified using an epitope specific to PBEF immobilized on solid support.

The epitope recognized by A300-372A maps to a region between residues 400 and 450 of human pre-B-cell colony enhancing factor 1 using the numbering given in Swiss-Prot entry P43490 (GeneID 10135).

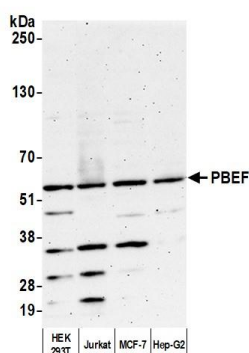
Immunoglobulin concentration was determined by extinction coefficient: absorbance at 280 nm of 1.4 equals 1.0 mg of IgG.

APPLICATIONS	Centrifuge tube to remove product from lid. Optimal working dilutions should be determined experimentally by the investigator. Prepare working dilution immediately before use.
	Western Blot 1:10,000 – 1:25,000
	Immunoprecipitation 2 – 10 µg/mg lysate
	Immunohistochemistry 1:2,000 to 1:10,000. Epitope retrieval with citrate buffer pH6.0 is recommended for FFPE tissue sections.

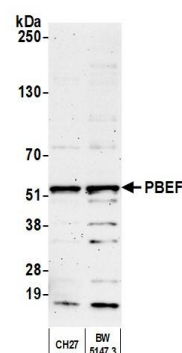
IHC HUMAN CONTROLS Colon Carcinoma, Ovarian Carcinoma, Placenta

ADDITIONAL INFO <https://www.fortislife.com/p/A300-372A>
Use the link above to view SDS, a current list of citations, and other product specific information.

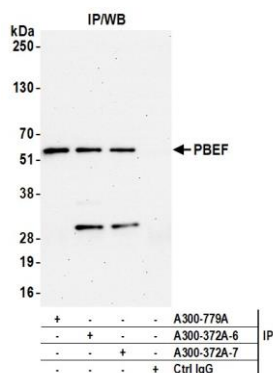
This document certifies that this product has met all of the quality control standards defined by Bethyl Laboratories, Inc.
Michael Spencer, PhD Date: November 1, 2023



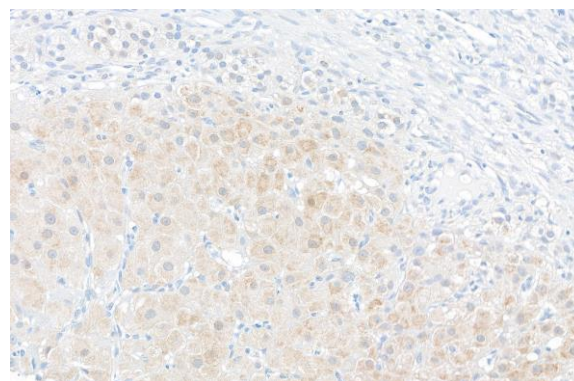
Detection of human PBEF by western blot. *Samples:* Whole cell lysate (10 µg) from HEK293T, Jurkat, MCF-7, and Hep-G2 cells prepared using NETN lysis buffer. *Antibody:* Affinity purified rabbit anti-PBEF antibody (A300-372A lot 7) used for WB at 0.1 µg/ml. *Detection:* Chemiluminescence with an exposure time of 3 minutes.



Detection of mouse PBEF by western blot. *Samples:* Whole cell lysate (10 µg) from CH27 and BW5147.3 cells prepared using NETN lysis buffer. *Antibody:* Affinity purified rabbit anti-PBEF antibody (A300-372A lot 7) used for WB at 0.1 µg/ml. *Detection:* Chemiluminescence with an exposure time of 3 minutes.



Detection of human PBEF by western blot of immunoprecipitates. *Samples:* Whole cell lysate (1.0 mg per IP reaction; 20% of IP loaded) from Jurkat cells prepared using NETN lysis buffer. *Antibodies:* Affinity purified rabbit anti-PBEF antibody (A300-372A lot 7) used for IP at 6 µg per reaction. PBEF was also immunoprecipitated by a previous lot of this antibody (A300-372A lot 6) and a second antibody against a different epitope of PBEF (A300-779A). For blotting immunoprecipitated PBEF, A300-372A was used at 0.1 µg/ml. *Detection:* Chemiluminescence with an exposure time of 30 seconds.



Detection of human PBEF by immunohistochemistry. *Sample:* FFPE section of human breast carcinoma. *Antibody:* Affinity purified rabbit anti-PBEF (A300-372A lot 7) used at a dilution of 1:5,000 (0.2µg/ml). *Detection:* DAB