



SZABO SCANDIC

Part of Europa Biosite

Produktinformation



Forschungsprodukte & Biochemikalien



Zellkultur & Verbrauchsmaterial



Diagnostik & molekulare Diagnostik



Laborgeräte & Service

Weitere Information auf den folgenden Seiten!
See the following pages for more information!



Lieferung & Zahlungsart

siehe unsere [Liefer- und Versandbedingungen](#)

Zuschläge

- Mindermengenzuschlag
- Trockeneiszuschlag
- Gefahrgutzuschlag
- Expressversand

SZABO-SCANDIC HandelsgmbH

Quellenstraße 110, A-1100 Wien

T. +43(0)1 489 3961-0

F. +43(0)1 489 3961-7

mail@szabo-scandic.com

www.szabo-scandic.com

[linkedin.com/company/szaboscandic](https://www.linkedin.com/company/szaboscandic) 

eIF3C/eIF3S8 Antibody

Rabbit Polyclonal

Antigen Affinity Purified Protein ID Q99613

Catalog No. A300-377A-T GenelD 8663

Lot No. A300-377A-T-2

APPLICATIONS	WB, IP
SPECIES REACTIVITY	Human
PRESUMED REACTIVITY	Based on 100% sequence identity, this antibody is predicted to react with Mouse, Rat, Bovine and Orangutan
AMOUNT	10 µl
CONCENTRATION	1000 µg/ml
STORAGE/SHELF LIFE	2 – 8°C / 1 year from date of receipt
PHYSICAL STATE	Liquid
BUFFER	Tris-citrate/phosphate buffer, pH 7 to 8 containing 0.09% Sodium Azide
ISOTYPE	IgG
ORIGIN	USA
PRODUCTION PROCEDURES	Antibody was affinity purified using an epitope specific to eIF3C/eIF3S8 immobilized on solid support.

The epitope recognized by A300-377A-T maps to a region between residues 863 and 913 of human eukaryotic translation initiation factor 3, subunit C (eukaryotic translation initiation factor 3, subunit 8, 110kDa) using the numbering given in Swiss-Prot entry Q99613 (GenelD 8663).

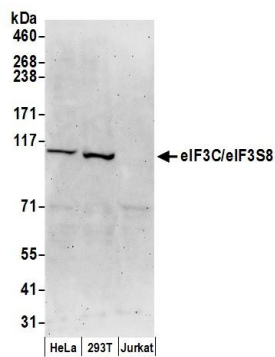
APPLICATIONS Centrifuge tube to remove product from lid. Optimal working dilutions should be determined experimentally by the investigator. Prepare working dilution immediately before use.

Western Blot 1:2,000 – 1:10,000

Immunoprecipitation 2 – 10 µg/mg lysate

ADDITIONAL INFO <https://www.bethyl.com/product/A300-377A-T>
Use the link above to view SDS, a current list of citations, and other product specific information.
IP-western blot protocol: https://www.bethyl.com/content/protocol_IP_WB

This document certifies that this product has met all of the quality control standards defined by Bethyl Laboratories, Inc.
Michael Spencer, PhD Date: June 6, 2022

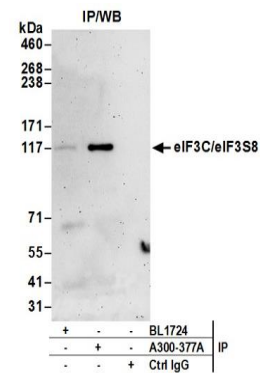


Detection of human eIF3C/eIF3S8 by western blot.

Samples: Whole cell lysate (50 µg) from HeLa, HEK293T, and Jurkat cells prepared using NETN lysis buffer.

Antibodies: Affinity purified rabbit anti-eIF3C/eIF3S8 antibody A300-377A (lot A300-377A-2) used for WB at 0.1 µg/ml.

Detection: Chemiluminescence with an exposure time of 3 minutes.



Detection of human eIF3C/eIF3S8 by western blot of immunoprecipitates.

Samples: Whole cell lysate (0.5 or 1.0 mg per IP reaction; 20% of IP loaded) from HEK293T cells prepared using NETN lysis buffer. *Antibodies:* Affinity purified rabbit anti-eIF3C/eIF3S8 antibody A300-377A (lot A300-377A-2) used for IP at 6 µg per reaction.

eIF3C/eIF3S8 was inefficiently immunoprecipitated by rabbit anti-eIF3C/eIF3S8 antibody BL1724. For blotting immunoprecipitated eIF3C/eIF3S8, A300-377A was used at 1 µg/ml. *Detection:* Chemiluminescence with an exposure time of 3 minutes.