



SZABO SCANDIC

Part of Europa Biosite

Produktinformation



Forschungsprodukte & Biochemikalien



Zellkultur & Verbrauchsmaterial



Diagnostik & molekulare Diagnostik



Laborgeräte & Service

Weitere Information auf den folgenden Seiten!
See the following pages for more information!



Lieferung & Zahlungsart

siehe unsere [Liefer- und Versandbedingungen](#)

Zuschläge

- Mindermengenzuschlag
- Trockeneiszuschlag
- Gefahrgutzuschlag
- Expressversand

SZABO-SCANDIC Handels GmbH

Quellenstraße 110, A-1100 Wien

T. +43(0)1 489 3961-0

F. +43(0)1 489 3961-7

mail@szabo-scandic.com

www.szabo-scandic.com

[linkedin.com/company/szaboscandic](https://www.linkedin.com/company/szaboscandic)



Bcl11a Antibody

Rabbit Polyclonal

Antigen Affinity Purified	RefSeq ID	NP_075044.2
Catalog No. A300-380A	Uniprot ID	Q9H165
Lot No. 3	GeneID	53335

APPLICATIONS	WB, IP
SPECIES REACTIVITY	Human
PRESUMED REACTIVITY	Based on 100% sequence identity, this antibody is predicted to react with Mouse
AMOUNT	100 µl
CONCENTRATION	1000 µg/ml
STORAGE/SHELF LIFE	2 – 8°C / 1 year from date of receipt
PHYSICAL STATE	Liquid
BUFFER	Tris-citrate/phosphate buffer, pH 7 to 8 containing 0.09% Sodium Azide
ISOTYPE	IgG
ORIGIN	USA
PRODUCTION PROCEDURES	Antibody was affinity purified using an epitope specific to Bcl11a immobilized on solid support.

The epitope recognized by A300-380A maps to a region between residues 1 and 50 of human B-cell CLL/Lymphoma 11A using the numbering given in Swiss-Prot entry Q9H165 (GeneID 53335).

Immunoglobulin concentration was determined by extinction coefficient: absorbance at 280 nm of 1.4 equals 1.0 mg of IgG.

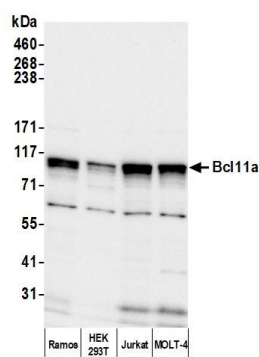
APPLICATIONS Centrifuge tube to remove product from lid. Optimal working dilutions should be determined experimentally by the investigator. Prepare working dilution immediately before use.

Western Blot	1:1,000 – 1:10,000
Immunoprecipitation	2 – 10 µg/mg lysate

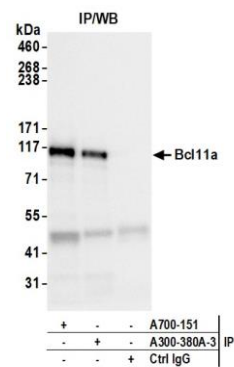
ADDITIONAL INFO <https://www.fortislifesciences.com/p/A300-380A>

Use the link above to view SDS, a current list of citations, and other product specific information.

This document certifies that this product has met all of the quality control standards defined by Bethyl Laboratories, Inc.
Michael Spencer, PhD Date: June 15, 2023



Detection of human Bcl11a by western blot. *Samples:* Whole cell lysate (25 µg) from Ramos, HEK293T, Jurkat, and MOLT-4 cells prepared using NETN lysis buffer. *Antibody:* Affinity purified rabbit anti-Bcl11a antibody (A300-380A lot 3) used for WB at 0.1 µg/ml. *Detection:* Chemiluminescence with an exposure time of 10 seconds.



Detection of human Bcl11a by western blot of immunoprecipitates. *Samples:* Whole cell lysate (1.0 mg per IP reaction; 10% of IP loaded) from Jurkat cells prepared using NETN lysis buffer. *Antibodies:* Affinity purified rabbit anti-Bcl11a antibody (A300-380A lot 3) used for IP at 6 µg per reaction. Bcl11a was also immunoprecipitated by a second antibody against a different epitope of Bcl11a (A700-151). For blotting immunoprecipitated Bcl11a, A300-380A was used at 0.1 µg/ml. *Detection:* Chemiluminescence with an exposure time of 3 seconds.