



SZABO SCANDIC

Part of Europa Biosite

Produktinformation



Forschungsprodukte & Biochemikalien



Zellkultur & Verbrauchsmaterial



Diagnostik & molekulare Diagnostik



Laborgeräte & Service

Weitere Information auf den folgenden Seiten!
See the following pages for more information!



Lieferung & Zahlungsart

siehe unsere [Liefer- und Versandbedingungen](#)

Zuschläge

- Mindermengenzuschlag
- Trockeneiszuschlag
- Gefahrgutzuschlag
- Expressversand

SZABO-SCANDIC Handels GmbH

Quellenstraße 110, A-1100 Wien

T. +43(0)1 489 3961-0

F. +43(0)1 489 3961-7

mail@szabo-scandic.com

www.szabo-scandic.com

[linkedin.com/company/szaboscandic](https://www.linkedin.com/company/szaboscandic) 

Bcl11b Antibody

Rabbit Polyclonal

Antigen Affinity Purified

Protein ID Q9C0K0

Catalog No. A300-384A-T

GeneID 64919

Lot No. A300-384A-T-1

APPLICATIONS WB, IP, IHC

SPECIES REACTIVITY Human

AMOUNT 10 µl

CONCENTRATION 1000 µg/ml

STORAGE/SHELF LIFE 2 – 8°C / 1 year from date of receipt

PHYSICAL STATE Liquid

BUFFER Tris-citrate/phosphate buffer, pH 7 to 8 containing 0.09% Sodium Azide

ISOTYPE IgG

ORIGIN USA

PRODUCTION PROCEDURES Antibody was affinity purified using an epitope specific to Bcl11b immobilized on solid support.

The epitope recognized by A300-384A-T maps to a region between residues 500 and 550 of human B-cell CLL/lymphoma 11B using the numbering given in entry NP_612808.1 (GeneID 64919).

Immunoglobulin concentration was determined by extinction coefficient: absorbance at 280 nm of 1.4 equals 1.0 mg of IgG.

APPLICATIONS Centrifuge tube to remove product from lid. Optimal working dilutions should be determined experimentally by the investigator. Prepare working dilution immediately before use.

Western Blot 1:5,000 – 1:15,000

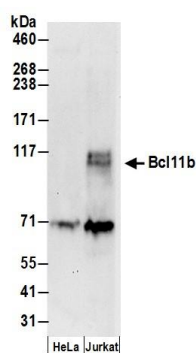
Immunoprecipitation 1 – 5 µg/mg lysate

Immunohistochemistry 1:500 – 1:2,000. Epitope retrieval with citrate buffer pH 6.0 is recommended for FFPE tissue sections.

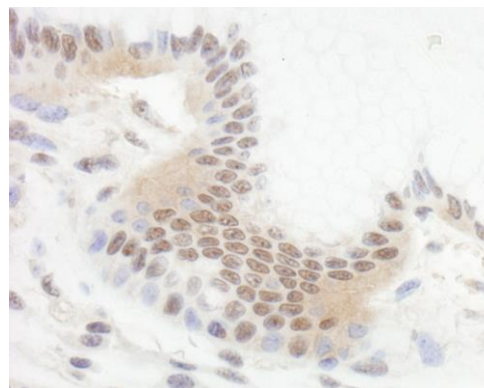
ADDITIONAL INFO <https://www.bethyl.com/product/A300-384A-T>

Use the link above to view SDS, a current list of citations, and other product specific information.
IP-western blot protocol: https://www.bethyl.com/content/protocol_IP_WB

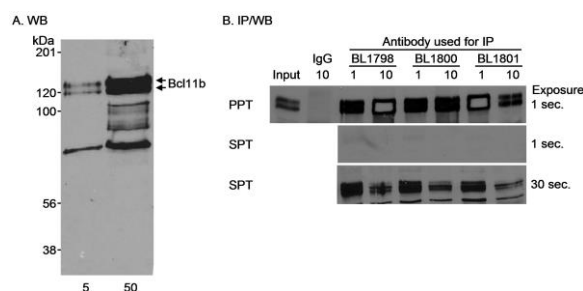
This document certifies that this product has met all of the quality control standards defined by Bethyl Laboratories, Inc.
Michael Spencer, PhD Date: June 6, 2022



Detection of human Bcl11b by western blot. *Samples:* Whole cell lysate (50 µg) from HeLa and HEK293T cells prepared using NETN lysis buffer. *Antibody:* Affinity purified rabbit anti-Bcl11b antibody A300-384A (lot A300-384A-1) used for WB at 0.066 µg/ml. *Detection:* Chemiluminescence with an exposure time of 3 minutes.



Detection of human Bcl11b by immunohistochemistry. *Sample:* FFPE section of human stomach carcinoma. *Antibody:* Affinity purified rabbit anti-Bcl11b (Cat. No. A300-384A) used at a dilution of 1:1,000 (1 µg/ml). *Detection:* DAB



Detection of human Bcl11b by western blot and immunoprecipitation. *Samples:* Nuclear extract (5 and 50 µg for WB, 1 mg for IP) from Jurkat cells. *Antibodies:* Affinity purified rabbit anti-Bcl11b antibody BL1800 (Cat. No. A300-384A) used at 0.1 µg/ml (A) and 0.5 µg/ml (B) for WB and at 1 and 10 µg/mg lysate for IP (B). Bcl11b was also immunoprecipitated using affinity purified rabbit anti-Bcl11b antibodies BL1798 (Cat. No. A300-383A) and BL1801 (Cat. No. A300-385A) at 1 and 10 µg/mg lysate. Normal rabbit IgG was used as a control for immunoprecipitation reactions. *Detection:* Chemiluminescence with exposure times of 1 minute (A), 1 second (B) or 30 seconds (B).