



SZABO SCANDIC

Part of Europa Biosite

Produktinformation



Forschungsprodukte & Biochemikalien



Zellkultur & Verbrauchsmaterial



Diagnostik & molekulare Diagnostik



Laborgeräte & Service

Weitere Information auf den folgenden Seiten!
See the following pages for more information!



Lieferung & Zahlungsart

siehe unsere [Liefer- und Versandbedingungen](#)

Zuschläge

- Mindermengenzuschlag
- Trockeneiszuschlag
- Gefahrgutzuschlag
- Expressversand

SZABO-SCANDIC HandelsgmbH

Quellenstraße 110, A-1100 Wien

T. +43(0)1 489 3961-0

F. +43(0)1 489 3961-7

mail@szabo-scandic.com

www.szabo-scandic.com

[linkedin.com/company/szaboscandic](https://www.linkedin.com/company/szaboscandic) 

Bcl11b Antibody

Rabbit Polyclonal

Antigen Affinity Purified

Protein ID Q9C0K0

Catalog No. A300-384A

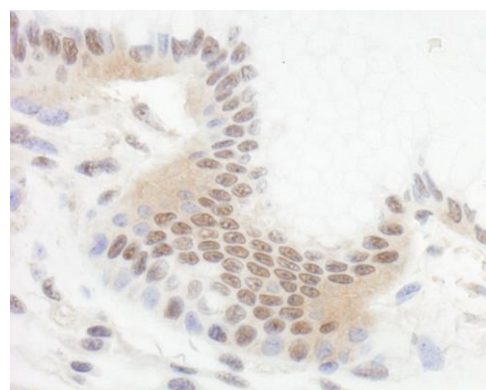
GeneID 64919

Lot No. A300-384A-1

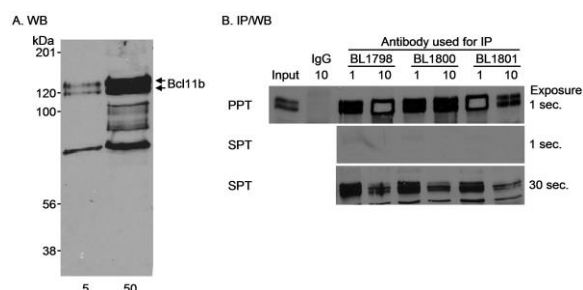


APPLICATIONS	WB, IP, IHC
SPECIES REACTIVITY	Human
AMOUNT	100 µl
CONCENTRATION	1000 µg/ml
STORAGE/SHELF LIFE	2 – 8° C / 1 year from date of receipt
PHYSICAL STATE	Liquid
BUFFER	Tris-citrate/phosphate buffer, pH 7 to 8 containing 0.09% Sodium Azide
ISOTYPE	IgG
ORIGIN	USA
PRODUCTION PROCEDURES	<p>Antibody was affinity purified using an epitope specific to Bcl11b immobilized on solid support.</p> <p>The epitope recognized by A300-384A maps to a region between residues 500 and 550 of human B-cell CLL/lymphoma 11B using the numbering given in entry NP_612808.1 (GeneID 64919).</p> <p>Immunoglobulin concentration was determined by extinction coefficient: absorbance at 280 nm of 1.4 equals 1.0 mg of IgG.</p>
APPLICATIONS	<p>Centrifuge tube to remove product from lid. Optimal working dilutions should be determined experimentally by the investigator. Prepare working dilution immediately before use.</p> <p>Western Blot 1:5,000 – 1:15,000</p> <p>Immunoprecipitation 1 – 5 µg/mg lysate</p> <p>Immunohistochemistry 1:500 – 1:2,000. Epitope retrieval with citrate buffer pH 6.0 is recommended for FFPE tissue sections.</p>
APPLICATION NOTES	<p>Western blot of immunoprecipitates performed using Normal Pig Serum (Cat. No. S100-020), Goat anti-Rabbit Light Chain HRP Conjugate (Cat. No. A120-113P) and 4-8% SDS-PAGE (link to IP-western blot protocol in Additional Info section below).</p> <p>Western blot of lysates performed using standard western blot reagents and 4-8% SDS-PAGE.</p>
IHC HUMAN CONTROLS	Laryngeal Squamous Cell Carcinoma, Ovarian Carcinoma, Skin Basal Cell Carcinoma, Skin Squamous Cell Carcinoma, Stomach Adenocarcinoma, Testicular Seminoma
ADDITIONAL INFO	<p>https://www.bethyl.com/product/A300-384A</p> <p>Use the link above to view SDS, a current list of citations, and other product specific information.</p> <p>IP-western blot protocol: https://www.bethyl.com/content/protocol_IP_WB</p>

This document certifies that this product has met all of the quality control standards defined by Bethyl Laboratories, Inc.
Eric McIntush, PhD | Chief Scientific Officer Date: June 21, 2019



Detection of human Bcl11b by immunohistochemistry.
Sample: FFPE section of human stomach carcinoma.
Antibody: Affinity purified rabbit anti-Bcl11b (Cat. No. A300-384A) used at a dilution of 1:1,000 (1 µg/ml).
Detection: DAB



Detection of human Bcl11b by western blot and immunoprecipitation. *Samples:* Nuclear extract (5 and 50 µg for WB, 1 mg for IP) from Jurkat cells. *Antibodies:* Affinity purified rabbit anti-Bcl11b antibody BL1800 (Cat. No. A300-384A) used at 0.1 µg/ml (A) and 0.5 µg/ml (B) for WB and at 1 and 10 µg/mg lysate for IP (B). Bcl11b was also immunoprecipitated using affinity purified rabbit anti-Bcl11b antibodies BL1798 (Cat. No. A300-383A) and BL1801 (Cat. No. A300-385A) at 1 and 10 µg/mg lysate. Normal rabbit IgG was used as a control for immunoprecipitation reactions. *Detection:* Chemiluminescence with exposure times of 1 minute (A), 1 second (B) or 30 seconds (B).