



# SZABO SCANDIC

Part of Europa Biosite

## Produktinformation



Forschungsprodukte & Biochemikalien



Zellkultur & Verbrauchsmaterial



Diagnostik & molekulare Diagnostik



Laborgeräte & Service

Weitere Information auf den folgenden Seiten!  
See the following pages for more information!



### Lieferung & Zahlungsart

siehe unsere [Liefer- und Versandbedingungen](#)

### Zuschläge

- Mindermengenzuschlag
- Trockeneiszuschlag
- Gefahrgutzuschlag
- Expressversand

### SZABO-SCANDIC HandelsgmbH

Quellenstraße 110, A-1100 Wien

T. +43(0)1 489 3961-0

F. +43(0)1 489 3961-7

[mail@szabo-scandic.com](mailto:mail@szabo-scandic.com)

[www.szabo-scandic.com](http://www.szabo-scandic.com)

[linkedin.com/company/szaboscandic](https://www.linkedin.com/company/szaboscandic) 

# Bcl11b Antibody

Rabbit Polyclonal

Antigen Affinity Purified

Protein ID Q9C0K0

Catalog No. A300-385A-T

GeneID 64919

Lot No. A300-385A-T-2

**APPLICATIONS** WB, IP, IHC

**SPECIES REACTIVITY** Human

**PRESUMED REACTIVITY** Based on 100% sequence identity, this antibody is predicted to react with Mouse

**AMOUNT** 10 µl

**CONCENTRATION** 1000 µg/ml

**STORAGE/SHELF LIFE** 2 – 8°C / 1 year from date of receipt

**PHYSICAL STATE** Liquid

**BUFFER** Tris-citrate/phosphate buffer, pH 7 to 8 containing 0.09% Sodium Azide

**ISOTYPE** IgG

**ORIGIN** USA

**PRODUCTION PROCEDURES** Antibody was affinity purified using an epitope specific to Bcl11b immobilized on solid support.

The epitope recognized by A300-385A-T maps to a region between residue 850 and the C-terminus (residue 894) of human B-cell CLL/lymphoma 11B using the numbering given in entry NP\_612808.1 (GeneID 64919).

**APPLICATIONS** Centrifuge tube to remove product from lid. Optimal working dilutions should be determined experimentally by the investigator. Prepare working dilution immediately before use.

Western Blot 1:2,000 – 1:10,000

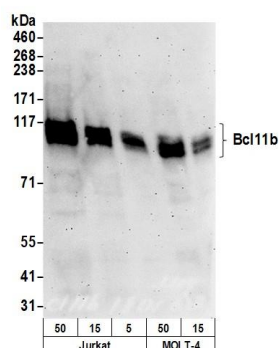
Immunoprecipitation 2 – 10 µg/mg lysate

Immunohistochemistry 1:500 – 1:2,000. Epitope retrieval with citrate buffer pH 6.0 is recommended for FFPE tissue sections.

**ADDITIONAL INFO** <https://www.bethyl.com/product/A300-385A-T>

Use the link above to view SDS, a current list of citations, and other product specific information.  
IP-western blot protocol: [https://www.bethyl.com/content/protocol\\_IP\\_WB](https://www.bethyl.com/content/protocol_IP_WB)

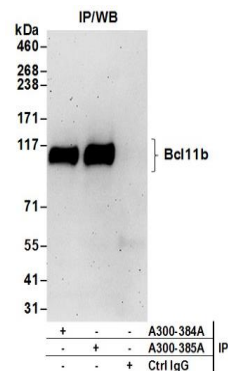
This document certifies that this product has met all of the quality control standards defined by Bethyl Laboratories, Inc.  
Michael Spencer, PhD Date: June 6, 2022



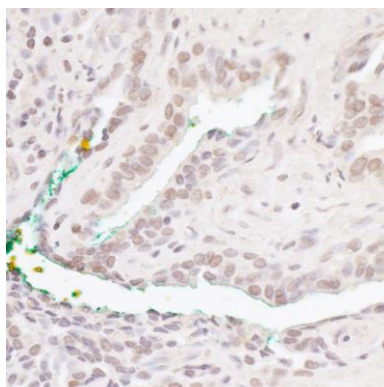
**Detection of human Bcl11b by western blot.** *Samples:* Whole cell lysate (50, 15, 5 µg) from Jurkat and (50, 15 µg) MOLT-4 cells prepared using NETN lysis buffer.

*Antibodies:* Affinity purified rabbit anti-Bcl11b antibody A300-385A (lot A300-385A-2) used for WB at 0.1 µg/ml.

*Detection:* Chemiluminescence with an exposure time of 3 minutes.



**Detection of human Bcl11b by western blot of immunoprecipitates.** *Samples:* Whole cell lysate (0.5 or 1.0 mg per IP reaction; 20% of IP loaded) from Jurkat cells prepared using RIPA lysis buffer. *Antibodies:* Affinity purified rabbit anti-Bcl11b antibody A300-385A (lot A300-385A-2) used for IP at 6 µg per reaction. Bcl11b was also immunoprecipitated by rabbit anti-Bcl11b antibody A300-384A. For blotting immunoprecipitated Bcl11b, A300-385A was used at 1 µg/ml. *Detection:* Chemiluminescence with an exposure time of 3 minutes.



**Detection of human Bcl11b by immunohistochemistry.**

*Sample:* FFPE section of human prostate carcinoma.

*Antibody:* Affinity purified rabbit anti-Bcl11b (Cat. No. A300-385A Lot2) used at a dilution of 1:1,000 (1 µg/ml).

*Detection:* DAB