



SZABO SCANDIC

Part of Europa Biosite

Produktinformation



Forschungsprodukte & Biochemikalien



Zellkultur & Verbrauchsmaterial



Diagnostik & molekulare Diagnostik



Laborgeräte & Service

Weitere Information auf den folgenden Seiten!
See the following pages for more information!



Lieferung & Zahlungsart

siehe unsere [Liefer- und Versandbedingungen](#)

Zuschläge

- Mindermengenzuschlag
- Trockeneiszuschlag
- Gefahrgutzuschlag
- Expressversand

SZABO-SCANDIC HandelsgmbH

Quellenstraße 110, A-1100 Wien

T. +43(0)1 489 3961-0

F. +43(0)1 489 3961-7

mail@szabo-scandic.com

www.szabo-scandic.com

[linkedin.com/company/szaboscandic](https://www.linkedin.com/company/szaboscandic) 

DHX15 Antibody

Rabbit Polyclonal

Antigen Affinity Purified

Protein ID O43143

Catalog No. A300-389A

GeneID 1665

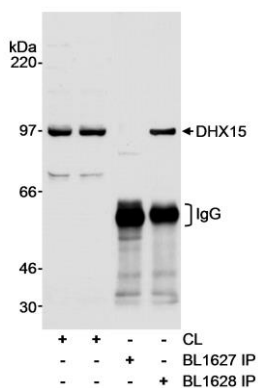
Lot No. A300-389A-1



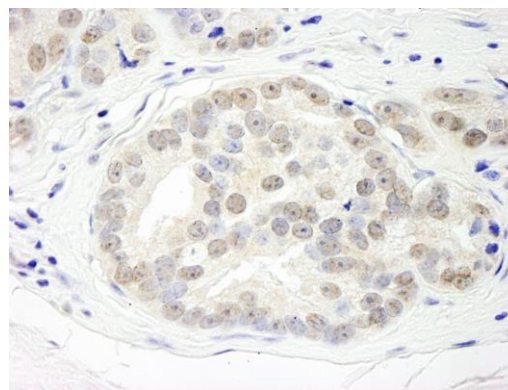
APPLICATIONS	WB, IHC						
SPECIES REACTIVITY	Human						
PRESUMED REACTIVITY	Based on 100% sequence identity, this antibody is predicted to react with Mouse and Orangutan						
AMOUNT	100 µl						
CONCENTRATION	1000 µg/ml						
STORAGE/SHELF LIFE	2 – 8° C / 1 year from date of receipt						
PHYSICAL STATE	Liquid						
BUFFER	Tris-citrate/phosphate buffer, pH 7 to 8 containing 0.09% Sodium Azide						
ISOTYPE	IgG						
ORIGIN	USA						
PRODUCTION PROCEDURES	<p>Antibody was affinity purified using an epitope specific to DHX15 immobilized on solid support.</p> <p>The epitope recognized by A300-389A maps to a region between residues 350 and 400 of human DEAH (Asp-Glu-Ala-His) Box Polypeptide 15 using the numbering given in Swiss-Prot entry O43143 (GeneID 1665).</p> <p>Immunoglobulin concentration was determined by extinction coefficient: absorbance at 280 nm of 1.4 equals 1.0 mg of IgG.</p>						
APPLICATIONS	<p>Centrifuge tube to remove product from lid. Optimal working dilutions should be determined experimentally by the investigator. Prepare working dilution immediately before use.</p> <table><tr><td>Western Blot</td><td>1:5,000 – 1:15,000</td></tr><tr><td>Immunoprecipitation</td><td>Not recommended. A300-390A has performed well and is suggested for IP.</td></tr><tr><td>Immunohistochemistry</td><td>1:500 – 1:2,000. Epitope retrieval with citrate buffer pH 6.0 is recommended for FFPE tissue sections.</td></tr></table>	Western Blot	1:5,000 – 1:15,000	Immunoprecipitation	Not recommended. A300-390A has performed well and is suggested for IP.	Immunohistochemistry	1:500 – 1:2,000. Epitope retrieval with citrate buffer pH 6.0 is recommended for FFPE tissue sections.
Western Blot	1:5,000 – 1:15,000						
Immunoprecipitation	Not recommended. A300-390A has performed well and is suggested for IP.						
Immunohistochemistry	1:500 – 1:2,000. Epitope retrieval with citrate buffer pH 6.0 is recommended for FFPE tissue sections.						
APPLICATION NOTES	Western blot of lysates performed using standard western blot reagents and 4-8% SDS-PAGE.						
IHC HUMAN CONTROLS	Breast Carcinoma, Ovarian Carcinoma, Prostate Carcinoma						
ADDITIONAL INFO	<p>https://www.bethyl.com/product/A300-389A</p> <p>Use the link above to view SDS, a current list of citations, and other product specific information.</p>						

This document certifies that this product has met all of the quality control standards defined by Bethyl Laboratories, Inc.
Eric McIntush, PhD | Chief Scientific Officer

Date: June 21, 2019



Detection of human DHX15 by western blot and immunoprecipitation. *Samples:* Whole cell lysate (CL; 60 µg for WB, 1 mg for IP) from HEK293T cells. *Antibodies:* Affinity purified rabbit anti-DHX15 antibody BL1627 (Cat. No. A300-389A) used at 0.1 µg/ml for WB and at 1 µg/mg lysate for IP, which did not precipitate DHX15. Successful IP of DHX15 was accomplished using affinity purified rabbit anti-DHX15 antibody BL1628 (Cat. No. A300-390A) at 1 µg/mg lysate. *Detection:* Chemiluminescence with an exposure time of 15 seconds.



Detection of human DHX15 by immunohistochemistry.

Sample: FFPE section of human prostate carcinoma. *Antibody:* Affinity purified rabbit anti-DHX15 (Cat. No. A300-389A) used at a dilution of 1:1,000 (1 µg/ml). *Detection:* DAB