



# SZABO SCANDIC

Part of Europa Biosite

## Produktinformation



Forschungsprodukte & Biochemikalien



Zellkultur & Verbrauchsmaterial



Diagnostik & molekulare Diagnostik



Laborgeräte & Service

Weitere Information auf den folgenden Seiten!  
See the following pages for more information!



### Lieferung & Zahlungsart

siehe unsere [Liefer- und Versandbedingungen](#)

### Zuschläge

- Mindermengenzuschlag
- Trockeneiszuschlag
- Gefahrgutzuschlag
- Expressversand

### SZABO-SCANDIC HandelsgmbH

Quellenstraße 110, A-1100 Wien

T. +43(0)1 489 3961-0

F. +43(0)1 489 3961-7

[mail@szabo-scandic.com](mailto:mail@szabo-scandic.com)

[www.szabo-scandic.com](http://www.szabo-scandic.com)

[linkedin.com/company/szaboscandic](https://www.linkedin.com/company/szaboscandic) 

# DHX15 Antibody

Rabbit Polyclonal

Antigen Affinity Purified

Protein ID O43143

Catalog No. A300-390A-T

GeneID 1665

Lot No. A300-390A-T-1

<b>APPLICATIONS</b>	WB, IP
<b>SPECIES REACTIVITY</b>	Human
<b>PRESUMED REACTIVITY</b>	Based on 100% sequence identity, this antibody is predicted to react with Mouse and Orangutan
<b>AMOUNT</b>	10 µl
<b>CONCENTRATION</b>	1000 µg/ml
<b>STORAGE/SHELF LIFE</b>	2 – 8°C / 1 year from date of receipt
<b>PHYSICAL STATE</b>	Liquid
<b>BUFFER</b>	Tris-citrate/phosphate buffer, pH 7 to 8 containing 0.09% Sodium Azide
<b>ISOTYPE</b>	IgG
<b>ORIGIN</b>	USA
<b>PRODUCTION PROCEDURES</b>	Antibody was affinity purified using an epitope specific to DHX15 immobilized on solid support.

The epitope recognized by A300-390A-T maps to a region between residue 750 and the C-terminus (residue 795) of human DEAH (Asp-Glu-Ala-His) Box Polypeptide 15 using the numbering given in Swiss-Prot entry O43143 (GeneID 1665).

Immunoglobulin concentration was determined by extinction coefficient: absorbance at 280 nm of 1.4 equals 1.0 mg of IgG.

**APPLICATIONS** Centrifuge tube to remove product from lid. Optimal working dilutions should be determined experimentally by the investigator. Prepare working dilution immediately before use.

Western Blot 1:5,000 – 1:15,000

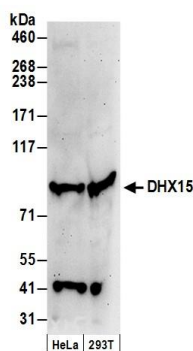
Immunoprecipitation 1 – 5 µg/mg lysate

**ADDITIONAL INFO** <https://www.bethyl.com/product/A300-390A-T>

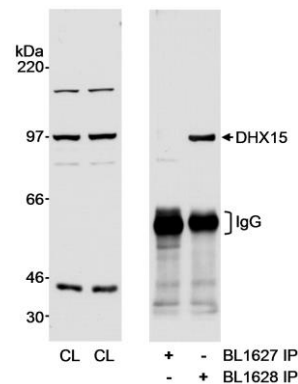
Use the link above to view SDS, a current list of citations, and other product specific information.

IP-western blot protocol: [https://www.bethyl.com/content/protocol\\_IP\\_WB](https://www.bethyl.com/content/protocol_IP_WB)

This document certifies that this product has met all of the quality control standards defined by Bethyl Laboratories, Inc.  
Michael Spencer, PhD Date: June 6, 2022



**Detection of human DHX15 by western blot.** *Samples:* Whole cell lysate (50 µg) from HeLa and HEK293T cells prepared using NETN lysis buffer. *Antibody:* Affinity purified rabbit anti-DHX15 antibody A300-390A (lot A300-390A-1) used for WB at 0.066 µg/ml. *Detection:* Chemiluminescence with an exposure time of 3 minutes.



**Detection of human DHX15 by western blot and immunoprecipitation.** *Samples:* Whole cell lysate (CL; 60 µg for WB, 1 mg for IP) from HEK293T cells. *Antibodies:* Affinity purified rabbit anti-DHX15 antibody BL1628 (Cat. No. A300-390A) used at 0.1 µg/ml for WB and at 1 µg/mg lysate for IP. immunoprecipitatesd DHX15 was blotted using affinity purified rabbit anti-DHX15 antibody BL1627 (Cat. No. A300-389A) at 0.1 µg/ml. BL1627 was also used unsuccessfully for IP (1 µg/mg lysate). *Detection:* Chemiluminescence with an exposure time of 15 seconds.