



# SZABO SCANDIC

Part of Europa Biosite

## Produktinformation



Forschungsprodukte & Biochemikalien



Zellkultur & Verbrauchsmaterial



Diagnostik & molekulare Diagnostik



Laborgeräte & Service

Weitere Information auf den folgenden Seiten!  
See the following pages for more information!



### Lieferung & Zahlungsart

siehe unsere [Liefer- und Versandbedingungen](#)

### Zuschläge

- Mindermengenzuschlag
- Trockeneiszuschlag
- Gefahrgutzuschlag
- Expressversand

### SZABO-SCANDIC HandelsgmbH

Quellenstraße 110, A-1100 Wien

T. +43(0)1 489 3961-0

F. +43(0)1 489 3961-7

[mail@szabo-scandic.com](mailto:mail@szabo-scandic.com)

[www.szabo-scandic.com](http://www.szabo-scandic.com)

[linkedin.com/company/szaboscandic](https://www.linkedin.com/company/szaboscandic) 

# ADAMTS13 Antibody

Goat Polyclonal

Antigen Affinity Purified

Protein ID NP\_620594.1

Catalog No. A300-391A

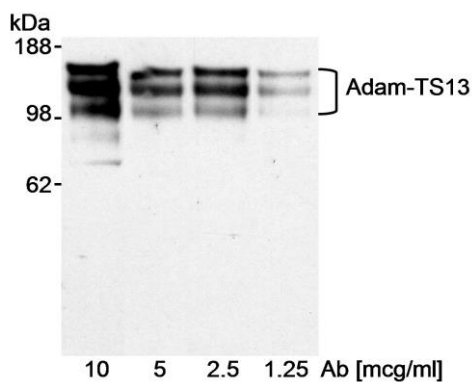
GeneID 11093

Lot No. A300-391A-1



APPLICATIONS	WB
SPECIES REACTIVITY	Human
AMOUNT	100 µl
CONCENTRATION	1000 µg/ml
STORAGE/SHELF LIFE	2 – 8° C / 1 year from date of receipt
PHYSICAL STATE	Liquid
BUFFER	Tris-citrate/phosphate buffer, pH 7 to 8 containing 0.09% Sodium Azide
ISOTYPE	IgG
ORIGIN	USA
PRODUCTION PROCEDURES	<p>Antibody was affinity purified using an epitope specific to ADAMTS13 immobilized on solid support.</p> <p>The epitope recognized by A300-391A maps to a region between residues 250 and 350 of human A Disintegrin-like and Metalloprotease (reprolysin type) with Thrombospondin type 1 motif, 13 using the numbering given in entry NP_620594.1 (GeneID 11093).</p> <p>Immunoglobulin concentration was determined by extinction coefficient: absorbance at 280 nm of 1.4 equals 1.0 mg of IgG.</p>
APPLICATIONS	<p>Centrifuge tube to remove product from lid. Optimal working dilutions should be determined experimentally by the investigator. Prepare working dilution immediately before use.</p> <p>Western Blot 1:100 – 1:1,000. A300-391A has been shown to react with purified recombinant ADAM-TS13. It has not been tested for reactivity with ADAM-TS13 from native sources, and the antibody is not warranted to have such activity.</p>
APPLICATION NOTES	Western blot of lysates performed using standard western blot reagents and 4-8% SDS-PAGE.
ADDITIONAL INFO	<p><a href="https://www.bethyl.com/product/A300-391A">https://www.bethyl.com/product/A300-391A</a></p> <p>Use the link above to view SDS, a current list of citations, and other product specific information.</p>

This document certifies that this product has met all of the quality control standards defined by Bethyl Laboratories, Inc.  
Eric McIntush, PhD | Chief Scientific Officer Date: June 21, 2019



**Detection of Recombinant human Adam-TS13 by western blot.** *Samples:* Purified recombinant Adam-TS13. *Antibody:* Affinity purified goat anti-ADAM-TS13 antibody (Cat. No. A300-391A) used at the indicated concentrations. *Detection:* Chemiluminescence with an exposure time of approximately 30 seconds.