



SZABO SCANDIC

Part of Europa Biosite

Produktinformation



Forschungsprodukte & Biochemikalien



Zellkultur & Verbrauchsmaterial



Diagnostik & molekulare Diagnostik



Laborgeräte & Service

Weitere Information auf den folgenden Seiten!
See the following pages for more information!



Lieferung & Zahlungsart

siehe unsere [Liefer- und Versandbedingungen](#)

Zuschläge

- Mindermengenzuschlag
- Trockeneiszuschlag
- Gefahrgutzuschlag
- Expressversand

SZABO-SCANDIC HandelsgmbH

Quellenstraße 110, A-1100 Wien

T. +43(0)1 489 3961-0

F. +43(0)1 489 3961-7

mail@szabo-scandic.com

www.szabo-scandic.com

[linkedin.com/company/szaboscandic](https://www.linkedin.com/company/szaboscandic) 

MTA2 Antibody

Rabbit Polyclonal

Antigen Affinity Purified

Protein ID O94776

Catalog No. A300-395A-T

GeneID 9219

Lot No. A300-395A-T-1

APPLICATIONS	WB, IP
SPECIES REACTIVITY	Human
PRESUMED REACTIVITY	Based on 100% sequence identity, this antibody is predicted to react with Mouse
AMOUNT	10 µl
CONCENTRATION	1000 µg/ml
STORAGE/SHELF LIFE	2 – 8°C / 1 year from date of receipt
PHYSICAL STATE	Liquid
BUFFER	Tris-citrate/phosphate buffer, pH 7 to 8 containing 0.09% Sodium Azide
ISOTYPE	IgG
ORIGIN	USA
PRODUCTION PROCEDURES	Antibody was affinity purified using an epitope specific to MTA2 immobilized on solid support.

The epitope recognized by A300-395A-T maps to a region between residues 500 and 550 of human metastasis-associated gene family, member 2 using the numbering given in Swiss-Prot entry O94776 (GeneID 9219).

APPLICATIONS Centrifuge tube to remove product from lid. Optimal working dilutions should be determined experimentally by the investigator. Prepare working dilution immediately before use.

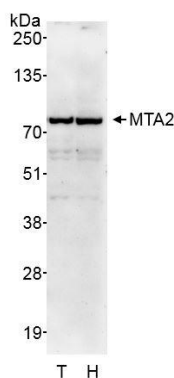
Western Blot 1:5,000 – 1:15,000

Immunoprecipitation 1 – 4 µg/mg lysate

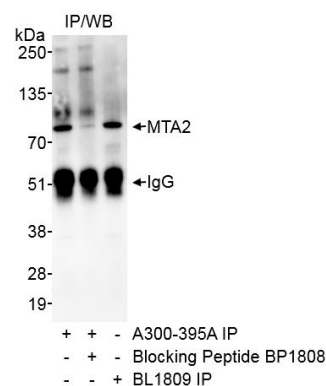
ADDITIONAL INFO <https://www.bethyl.com/product/A300-395A-T>

Use the link above to view SDS, a current list of citations, and other product specific information. IP-western blot protocol: https://www.bethyl.com/content/protocol_IP_WB

This document certifies that this product has met all of the quality control standards defined by Bethyl Laboratories, Inc.
Michael Spencer, PhD Date: June 6, 2022



Detection of human MTA2 by western blot. *Samples:* Whole cell lysate (50 µg) from HEK293T (T) and HeLa (H) cells prepared using NETN lysis buffer. *Antibody:* Affinity purified rabbit anti-MTA2 antibody A300-395A (lot A300-395A-1) used for WB at 0.1 µg/ml. *Detection:* Chemiluminescence with exposure time of 2 minutes.



Detection of human MTA2 by western blot of immunoprecipitates. *Samples:* A) Whole cell lysate (1.0 mg per IP reaction; 20% of IP loaded) from HeLa cells. *Antibody:* Affinity purified rabbit anti-MTA2 antibody A300-395A (lot A300-395A-1) used for IP at 1 µg/mg lysate. MTA2 was also immunoprecipitated by BL1809, which binds to a different epitope on MTA2. For blotting immunoprecipitated MTA2, A300-395A was used at 1 µg/ml. *Detection:* Chemiluminescence with exposure time 30 seconds.