



SZABO SCANDIC

Part of Europa Biosite

Produktinformation



Forschungsprodukte & Biochemikalien



Zellkultur & Verbrauchsmaterial



Diagnostik & molekulare Diagnostik



Laborgeräte & Service

Weitere Information auf den folgenden Seiten!
See the following pages for more information!



Lieferung & Zahlungsart

siehe unsere [Liefer- und Versandbedingungen](#)

Zuschläge

- Mindermengenzuschlag
- Trockeneiszuschlag
- Gefahrgutzuschlag
- Expressversand

SZABO-SCANDIC HandelsgmbH

Quellenstraße 110, A-1100 Wien

T. +43(0)1 489 3961-0

F. +43(0)1 489 3961-7

mail@szabo-scandic.com

www.szabo-scandic.com

[linkedin.com/company/szaboscandic](https://www.linkedin.com/company/szaboscandic) 

G6PD Antibody

Rabbit Polyclonal

Antigen Affinity Purified

Protein ID NP_000393.2

Catalog No. A300-404A-T

GeneID 2539

Lot No. A300-404A-T-5

APPLICATIONS	WB
SPECIES REACTIVITY	Human, Mouse
AMOUNT	10 µl
CONCENTRATION	1000 µg/ml
STORAGE/SHELF LIFE	2 – 8°C / 1 year from date of receipt
PHYSICAL STATE	Liquid
BUFFER	Tris-citrate/phosphate buffer, pH 7 to 8 containing 0.09% Sodium Azide
ISOTYPE	IgG
ORIGIN	USA
PRODUCTION PROCEDURES	Antibody was affinity purified using an epitope specific to G6PD immobilized on solid support.

The epitope recognized by A300-404A-T maps to a region between residues 50 and 100 of human Glucose-6-Phosphate Dehydrogenase using the numbering given in entry NP_000393.2 (GeneID 2539).

Immunoglobulin concentration was determined by extinction coefficient: absorbance at 280 nm of 1.4 equals 1.0 mg of IgG.

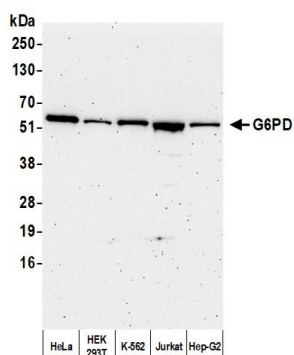
APPLICATIONS Centrifuge tube to remove product from lid. Optimal working dilutions should be determined experimentally by the investigator. Prepare working dilution immediately before use.

Western Blot 1:2,000 – 1:10,000

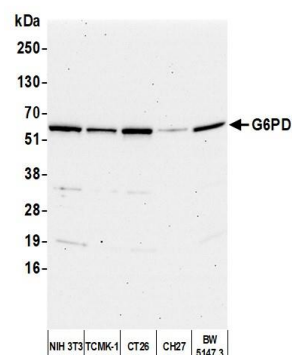
ADDITIONAL INFO <https://www.bethyl.com/product/A300-404A-T>

Use the link above to view SDS, a current list of citations, and other product specific information.
IP-western blot protocol: https://www.bethyl.com/content/protocol_IP_WB

This document certifies that this product has met all of the quality control standards defined by Bethyl Laboratories, Inc.
Michael Spencer, PhD Date: April 25, 2022



Detection of human G6PD by western blot. *Samples:* Whole cell lysate (5 μ g) from HeLa, HEK293T, K-562, Jurkat, and Hep-G2 cells prepared using NETN lysis buffer. ***Antibody:*** Affinity purified rabbit anti-G6PD antibody (A300-404A lot 5) used for WB at 0.1 μ g/ml. ***Detection:*** Chemiluminescence with an exposure time of 3 minutes.



Detection of human G6PD by western blot. *Samples:* Whole cell lysate (5 μ g) from NIH 3T3, TCMK-1, CT26, CH27, and BW5147.3 cells prepared using NETN lysis buffer. ***Antibody:*** Affinity purified rabbit anti-G6PD antibody (A300-404A lot 5) used for WB at 0.1 μ g/ml. ***Detection:*** Chemiluminescence with an exposure time of 30 seconds.