



# SZABO SCANDIC

Part of Europa Biosite

## Produktinformation



Forschungsprodukte & Biochemikalien



Zellkultur & Verbrauchsmaterial



Diagnostik & molekulare Diagnostik



Laborgeräte & Service

Weitere Information auf den folgenden Seiten!  
See the following pages for more information!



### Lieferung & Zahlungsart

siehe unsere [Liefer- und Versandbedingungen](#)

### Zuschläge

- Mindermengenzuschlag
- Trockeneiszuschlag
- Gefahrgutzuschlag
- Expressversand

### SZABO-SCANDIC Handels GmbH

Quellenstraße 110, A-1100 Wien

T. +43(0)1 489 3961-0

F. +43(0)1 489 3961-7

[mail@szabo-scandic.com](mailto:mail@szabo-scandic.com)

[www.szabo-scandic.com](http://www.szabo-scandic.com)

[linkedin.com/company/szaboscandic](https://www.linkedin.com/company/szaboscandic) 

# EWS Antibody

Rabbit Polyclonal

Antigen Affinity Purified

Protein ID Q01844

Catalog No. A300-417A

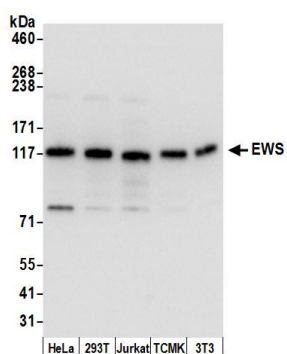
GeneID 2130

Lot No. A300-417A-2



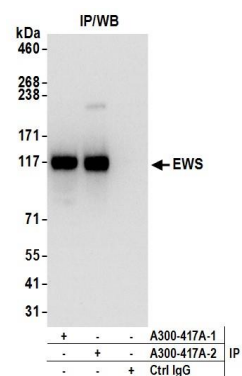
|                              |   |
|------------------------------|---|
| <b>APPLICATIONS</b>          | WB, IP, IHC   |
| <b>SPECIES REACTIVITY</b>    | Human, Mouse  |
| <b>AMOUNT</b>                | 100 µl  |
| <b>CONCENTRATION</b>         | 1000 µg/ml  |
| <b>STORAGE/SHELF LIFE</b>    | 2 – 8° C / 1 year from date of receipt  |
| <b>PHYSICAL STATE</b>        | Liquid  |
| <b>BUFFER</b>                | Tris-citrate/phosphate buffer, pH 7 to 8 containing 0.09% Sodium Azide  |
| <b>ISOTYPE</b>               | IgG   |
| <b>ORIGIN</b>                | USA   |
| <b>PRODUCTION PROCEDURES</b> | <p>Antibody was affinity purified using an epitope specific to EWS immobilized on solid support.</p> <p>The epitope recognized by A300-417A maps to a region between residues 100 and 150 of human Ewing sarcoma breakpoint region 1 using the numbering given in SwissProt entry Q01844 (GeneID 2130).</p> <p>Immunoglobulin concentration was determined by extinction coefficient: absorbance at 280 nm of 1.4 equals 1.0 mg of IgG.</p> |
| <b>APPLICATIONS</b>          | <p>Centrifuge tube to remove product from lid. Optimal working dilutions should be determined experimentally by the investigator. Prepare working dilution immediately before use.</p> <p>Western Blot 1:10,000 – 1:20,000</p> <p>Immunoprecipitation 1 – 5 µg/mg lysate</p> <p>Immunohistochemistry 1:2,000 – 1:10,000. Epitope retrieval with citrate buffer pH 6.0 is recommended for FFPE tissue sections.</p>                          |
| <b>APPLICATION NOTES</b>     | Western blot of immunoprecipitates performed using Normal Pig Serum (Cat. No. S100-020), Goat anti-Rabbit Light Chain HRP Conjugate (Cat. No. A120-113P) and 4-8% SDS-PAGE (link to IP-western blot protocol in Additional Info section below).   |
| <b>IHC HUMAN CONTROLS</b>    | Western blot of lysates performed using standard western blot reagents and 4-8% SDS-PAGE. Bone Marrow-Metastatic Carcinoma, Breast Carcinoma, Colon Carcinoma, Laryngeal Squamous Cell Carcinoma, Ovarian Carcinoma, Prostate Carcinoma, Stomach Adenocarcinoma   |
| <b>ADDITIONAL INFO</b>       | <p><a href="https://www.bethyl.com/product/A300-417A">https://www.bethyl.com/product/A300-417A</a></p> <p>Use the link above to view SDS, a current list of citations, and other product specific information.</p> <p>IP-western blot protocol: <a href="https://www.bethyl.com/content/protocol_IP_WB">https://www.bethyl.com/content/protocol_IP_WB</a></p>   |

This document certifies that this product has met all of the quality control standards defined by Bethyl Laboratories, Inc.  
Eric McIntush, PhD | Chief Scientific Officer Date: June 21, 2019



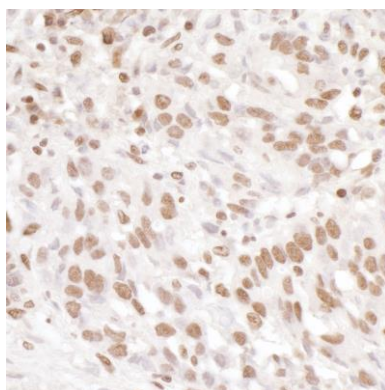
#### Detection of human and mouse EWS by western blot.

**Samples:** Whole cell lysate (5 µg) from HeLa, HEK293T, Jurkat, mouse TCMK-1, and mouse NIH 3T3 cells prepared using NETN lysis buffer. **Antibody:** Affinity purified rabbit anti-EWS antibody A300-417A (lot A300-417A-2) used for WB at 0.04 µg/ml. **Detection:** Chemiluminescence with an exposure time of 1 second.



#### Detection of human EWS by western blot of immunoprecipitates.

**Samples:** Whole cell lysate (1.0 mg per IP reaction; 20% of IP loaded) from HeLa cells prepared using NETN lysis buffer. **Antibodies:** Affinity purified rabbit anti-EWS antibody A300-417A (lot A300-417A-2) used for IP at 3 µg per reaction. EWS was also immunoprecipitated by a previous lot of this antibody (lot A300-417A-1). For blotting immunoprecipitated EWS, A300-417A was used at 0.1 µg/ml. **Detection:** Chemiluminescence with an exposure time of 3 seconds.



#### Detection of human EWS by immunohistochemistry.

**Sample:** FFPE section of human breast carcinoma.

**Antibody:** Affinity purified rabbit anti-EWS (Cat. No. A300-417A Lot2) used at a dilution of 1:5,000 (0.2 µg/ml).

**Detection:** DAB