



SZABO SCANDIC

Part of Europa Biosite

Produktinformation



Forschungsprodukte & Biochemikalien



Zellkultur & Verbrauchsmaterial



Diagnostik & molekulare Diagnostik



Laborgeräte & Service

Weitere Information auf den folgenden Seiten!
See the following pages for more information!



Lieferung & Zahlungsart

siehe unsere [Liefer- und Versandbedingungen](#)

Zuschläge

- Mindermengenzuschlag
- Trockeneiszuschlag
- Gefahrgutzuschlag
- Expressversand

SZABO-SCANDIC Handels GmbH

Quellenstraße 110, A-1100 Wien

T. +43(0)1 489 3961-0

F. +43(0)1 489 3961-7

mail@szabo-scandic.com

www.szabo-scandic.com

[linkedin.com/company/szaboscandic](https://www.linkedin.com/company/szaboscandic)



CARM1 Antibody

Rabbit Polyclonal

| | | |
|---------------------------|------------|-------------|
| Antigen Affinity Purified | RefSeq ID | NP_954592.1 |
| Catalog No. A300-421A | Uniprot ID | Q86X55 |
| Lot No. 5 | GeneID | 10498 |

| | |
|------------------------------|-------------------------------------------------------------------------------------------------|
| APPLICATIONS | WB, IP, IHC |
| SPECIES REACTIVITY | Human, Mouse |
| PRESUMED REACTIVITY | Based on 100% sequence identity, this antibody is predicted to react with Rat |
| AMOUNT | 100 µl |
| CONCENTRATION | 1000 µg/ml |
| STORAGE/SHELF LIFE | 2 – 8°C / 1 year from date of receipt |
| PHYSICAL STATE | Liquid |
| BUFFER | Tris-citrate/phosphate buffer, pH 7 to 8 containing 0.09% Sodium Azide |
| ISOTYPE | IgG |
| ORIGIN | USA |
| PRODUCTION PROCEDURES | Antibody was affinity purified using an epitope specific to CARM1 immobilized on solid support. |

The epitope recognized by A300-421A maps to a region between residue 550 and the C-terminus (residue 585) of human Coactivator-Associated Arginine Methyltransferase 1 using the numbering given in Swiss-Prot entry Q86X55 (GeneID 10498).

Immunoglobulin concentration was determined using Beer's Law where 1mg/mL IgG has an A280 of 1.4.

APPLICATIONS Centrifuge tube to remove product from lid. Optimal working dilutions should be determined experimentally by the investigator. Prepare working dilution immediately before use.

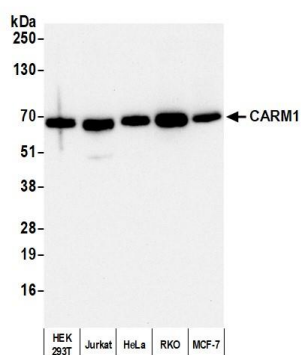
| | |
|----------------------|--------------------------------------------------------------------------------------------------------|
| Western Blot | 1:10,000 – 1:25,000 |
| Immunoprecipitation | 2 – 10 µg/mg lysate |
| Immunohistochemistry | 1:500 to 1:2,000. Epitope retrieval with citrate buffer pH6.0 is recommended for FFPE tissue sections. |

IHC HUMAN CONTROLS Breast Carcinoma, Non-Small Cell Lung Cancer, Prostate Carcinoma, Stomach Adenocarcinoma, Testicular Seminoma

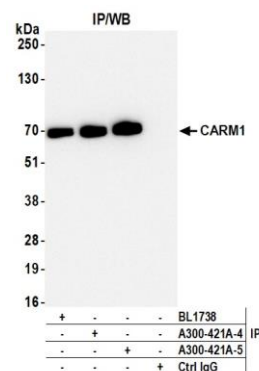
ADDITIONAL INFO <https://www.fortislife.com/p/A300-421A>

Use the link above to view SDS, a current list of citations, and other product specific information.

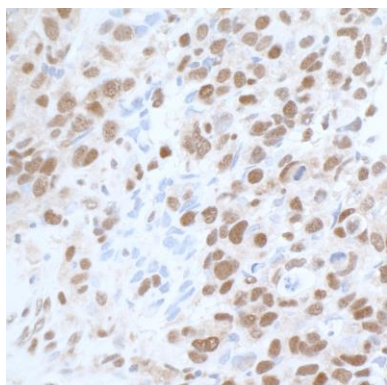
This document certifies that this product has met all of the quality control standards defined by Bethyl Laboratories, Inc.
Michael Spencer, PhD Date: December 20, 2023



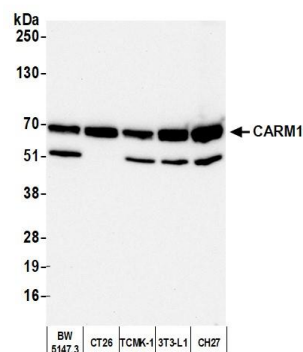
Detection of human CARM1 by western blot. *Samples:* Whole cell lysate (10 µg) from HEK293T, Jurkat, HeLa, RKO, and MCF-7 cells prepared using NETN lysis buffer. *Antibody:* Affinity purified rabbit anti-CARM1 antibody (A300-421A lot 5) used for WB at 0.04 µg/ml. *Detection:* Chemiluminescence with an exposure time of 30 seconds.



Detection of human CARM1 by western blot of immunoprecipitates. *Samples:* Whole cell lysate (1 mg per IP; 10% of IP loaded) from HEK293T cells prepared using NETN lysis buffer. *Antibodies:* Affinity purified rabbit anti-CARM1 antibody (A300-421A lot 5) used for IP at 6 µg per reaction. CARM1 was also immunoprecipitated by a previous lot of this antibody (A300-421A lot 4) and a second antibody against a different epitope of CARM1 (BL1738). For blotting immunoprecipitated CARM1, A300-421A was used at 0.04 µg/ml. *Detection:* Chemiluminescence with an exposure time of 10 seconds.



Detection of human CARM1 by immunohistochemistry. *Sample:* FFPE section of human breast carcinoma. *Antibody:* Affinity purified rabbit anti-CARM1 (A300-421A) used at 1:1,000 (1 µg/ml). *Detection:* DAB



Detection of mouse CARM1 by western blot. *Samples:* Whole cell lysate (10 µg) from BW5147.3, CT26, TCMK-1, 3T3-L1, and CH27 cells prepared using NETN lysis buffer. *Antibody:* Affinity purified rabbit anti-CARM1 antibody (A300-421A lot 5) used for WB at 0.04 µg/ml. *Detection:* Chemiluminescence with an exposure time of 30 seconds.