



SZABO SCANDIC

Part of Europa Biosite

Produktinformation



Forschungsprodukte & Biochemikalien



Zellkultur & Verbrauchsmaterial



Diagnostik & molekulare Diagnostik



Laborgeräte & Service

Weitere Information auf den folgenden Seiten!
See the following pages for more information!



Lieferung & Zahlungsart

siehe unsere [Liefer- und Versandbedingungen](#)

Zuschläge

- Mindermengenzuschlag
- Trockeneiszuschlag
- Gefahrgutzuschlag
- Expressversand

SZABO-SCANDIC Handels GmbH

Quellenstraße 110, A-1100 Wien

T. +43(0)1 489 3961-0

F. +43(0)1 489 3961-7

mail@szabo-scandic.com

www.szabo-scandic.com

[linkedin.com/company/szaboscandic](https://www.linkedin.com/company/szaboscandic) 

TPX2 Antibody

Rabbit Polyclonal

Antigen Affinity Purified

Protein ID Q9ULW0

Catalog No. A300-429A-T

GeneID 22974

Lot No. A300-429A-T-1

APPLICATIONS WB, IP, ICC-IF

SPECIES REACTIVITY Human

AMOUNT 10 µl

CONCENTRATION 1000 µg/ml

STORAGE/SHELF LIFE 2 – 8°C / 1 year from date of receipt

PHYSICAL STATE Liquid

BUFFER Tris-citrate/phosphate buffer, pH 7 to 8 containing 0.09% Sodium Azide

ISOTYPE IgG

ORIGIN USA

PRODUCTION PROCEDURES Antibody was affinity purified using an epitope specific to TPX2 immobilized on solid support.

The epitope recognized by A300-429A-T maps to a region between residues 150 and 200 of human TPX2 using the numbering given in Swiss-Prot entry Q9ULW0 (GeneID 22974).

APPLICATIONS Centrifuge tube to remove product from lid. Optimal working dilutions should be determined experimentally by the investigator. Prepare working dilution immediately before use.

Western Blot 1:5,000 – 1:15,000

Immunoprecipitation 1 – 4 µg/mg lysate

Immunofluorescence (ICC) 1:250 – 1:1,000. Formaldehyde fixation is recommended. Permeabilization with Triton-X 100 is recommended for formaldehyde-fixed cells.

ADDITIONAL INFO <https://www.bethyl.com/product/A300-429A-T>

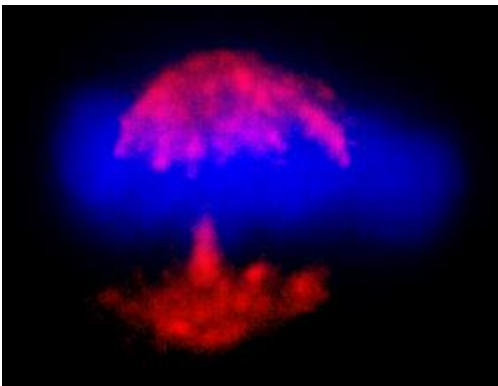
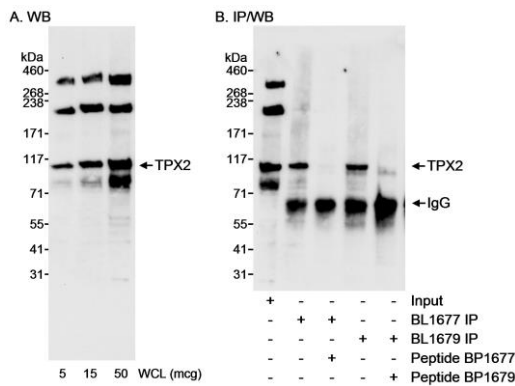
Use the link above to view SDS, a current list of citations, and other product specific information.

IP-western blot protocol: https://www.bethyl.com/content/protocol_IP_WB

This document certifies that this product has met all of the quality control standards defined by Bethyl Laboratories, Inc.

Michael Spencer, PhD

Date: June 6, 2022



Detection of human TPX2 by western blot and immunoprecipitation. *Samples:* Whole cell lysate (WCL; 5, 15, 50 μg for A; 50 μg for Input and 1 mg for IP in B) from HeLa cells. *Antibodies:* Affinity purified rabbit anti-TPX2 antibody BL1677 (Cat. No. A300-429A) used at 0.1 μg/ml for WB (A & B) and at 0.4 μg/mg lysate for IP (B). TPX2 was also immunoprecipitated using rabbit anti-TPX2 antibody BL1679 (Cat. No. A300-430A) at 0.4 μg/mg lysate. *Detection:* Chemiluminescence with an exposure time of 1 minute.

Detection of human TPX2 by immunocytochemistry. *Sample:* Formaldehyde-fixed asynchronous HeLa cell. *Antibody:* Affinity purified rabbit anti-TPX2 (Cat. No.A300-429A Lot1) used at a dilution of 1:400 (2.5 μg/ml). *Detection:* Red-fluorescent goat anti-rabbit IgG-heavy and light chain, cross-adsorbed Antibody DyLight® 594 Conjugated used at a dilution of 1:100