



SZABO SCANDIC

Part of Europa Biosite

Produktinformation



Forschungsprodukte & Biochemikalien



Zellkultur & Verbrauchsmaterial



Diagnostik & molekulare Diagnostik



Laborgeräte & Service

Weitere Information auf den folgenden Seiten!
See the following pages for more information!



Lieferung & Zahlungsart

siehe unsere [Liefer- und Versandbedingungen](#)

Zuschläge

- Mindermengenzuschlag
- Trockeneiszuschlag
- Gefahrgutzuschlag
- Expressversand

SZABO-SCANDIC Handels GmbH

Quellenstraße 110, A-1100 Wien

T. +43(0)1 489 3961-0

F. +43(0)1 489 3961-7

mail@szabo-scandic.com

www.szabo-scandic.com

[linkedin.com/company/szaboscandic](https://www.linkedin.com/company/szaboscandic) 

DBC1 /p30 DBC Antibody

Rabbit Polyclonal

Antigen Affinity Purified Protein ID Q6P0Q9

Catalog No. A300-432A-T GeneID 57805

Lot No. A300-432A-T-2

APPLICATIONS	WB, IP, IHC
SPECIES REACTIVITY	Human, Mouse
PRESUMED REACTIVITY	Based on 100% sequence identity, this antibody is predicted to react with Orangutan
AMOUNT	10 µl
CONCENTRATION	1000 µg/ml
STORAGE/SHELF LIFE	2 – 8°C / 1 year from date of receipt
PHYSICAL STATE	Liquid
BUFFER	Tris-citrate/phosphate buffer, pH 7 to 8 containing 0.09% Sodium Azide
ISOTYPE	IgG
ORIGIN	USA
PRODUCTION PROCEDURES	Antibody was affinity purified using an epitope specific to DBC1 immobilized on solid support.

The epitope recognized by A300-432A-T maps to a region between residues 1 and 50 of human Deleted in Breast Cancer 1 using the numbering given in TrEMBL entry Q6P0Q9 (GeneID 57805).

APPLICATIONS Centrifuge tube to remove product from lid. Optimal working dilutions should be determined experimentally by the investigator. Prepare working dilution immediately before use.

Western Blot 1:10,000 – 1:20,000

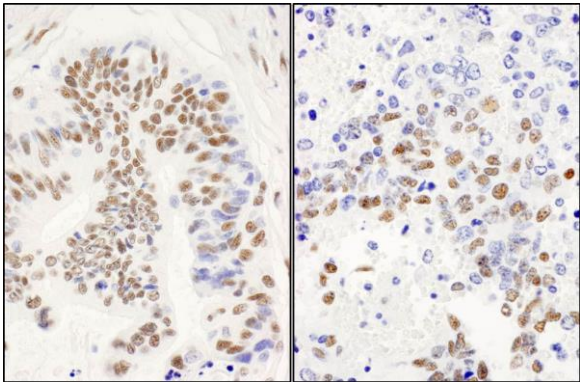
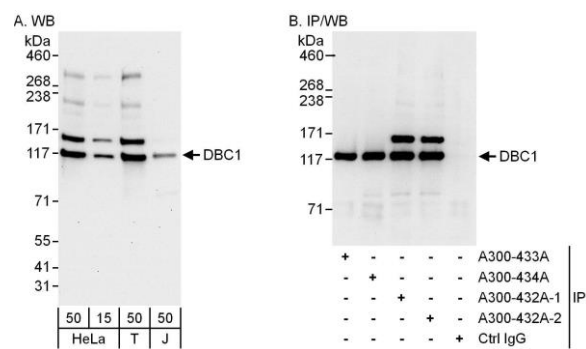
Immunoprecipitation 1 – 10 µg/mg lysate

Immunohistochemistry 1:1,000 – 1:5,000. Epitope retrieval with citrate buffer pH 6.0 is recommended for FFPE tissue sections.

ADDITIONAL INFO <https://www.bethyl.com/product/A300-432A-T>

Use the link above to view SDS, a current list of citations, and other product specific information.
IP-western blot protocol: https://www.bethyl.com/content/protocol_IP_WB

This document certifies that this product has met all of the quality control standards defined by Bethyl Laboratories, Inc.
Michael Spencer, PhD Date: June 6, 2022



Detection of human DBC1 /p30 DBC by western blot and immunoprecipitation. *Samples:* Whole cell lysate from HeLa (15 and 50 µg for WB; 1 mg for IP, 20% of IP loaded), HEK293T (T; 50 µg) and Jurkat (J; 50 µg) cells. *Antibodies:* Affinity purified rabbit anti-DBC1 /p30 DBC antibody A300-432A (lot number A300-432A-2) used for WB at 0.1 µg/ml (A) and 1 µg/ml (B) and used for IP at 6 µg/mg lysate. DBC1 /p30 DBC was also immunoprecipitated by a previous lot (A300-432A-2) of this antibody and by affinity purified rabbit anti-DBC1 /p30 DBC antibodies A300-433A and A300-434A, which recognize downstream epitopes. *Detection:* Chemiluminescence with exposure times of 30 seconds (A) and 10 seconds (B).

Detection of human and mouse DBC1 /p30 DBC by immunohistochemistry. *Sample:* FFPE sections of human ovarian carcinoma (left) and mouse teratoma (right). *Antibody:* Affinity purified rabbit anti-DBC1 /p30 DBC (Cat. No. A300-432A Lot2) used at a dilution of 1:5,000 (0.2 µg/ml) and 1:1,000 (1 µg/ml). *Detection:* DAB